

**Joint 2014 Meeting
Weed Science Society of America
And
Canadian Weed Science Society/Société
canadienne de malherbologie**

CWSS/SCM Sustaining Sponsors.....	Inside Front Cover
Location of Special Committees & Activities.....	1
Local Arrangements Committee	1
The 2014 Program.....	2
2014 Program Committee	5
General Information.....	5
Committee Meetings.....	9
Summary of 2014 Program.....	11
Complete Program	17
Meeting Room Maps.....	58
Author Index	78
Key Word Index	98
WSSA Board of Directors	108
CWSS/SCM Board of Directors	109
Personal Time Schedule	112
Notes	113
WSSA Sustaining Members	Inside Back Cover

**Location of Special Committees
and Activities
February 2014**

WSSA Photo Contest Judging	Constable
Registration (Including Guests)	Regency Foyer
WSSA Board Meeting (Sat/Sun/Thurs).....	Stanley
CWSS/SCM BOD Meeting (Mon/Thurs).....	Cypress

**Local Arrangements Committee
2014-Vancouver, British Columbia**

Chair.....	Victoria Brookes
Posters	Hugh Beckie
CWSS/SCM Industry Reception	Don Hare
CWSS/SCM Photo Contest.....	Christine Bruneau
Local Sponsorship.....	David Ralph, Grant McMillan
Audio Visual	Tim Miller
Media and Publicity	David Clements
Commercial Displays	Lisa Lunn
Graduate Student Session	Mahesh Upadhyaya
Registration/CWSS-SCM Ex. Asst.....	Anita Drabyk
PUFF Run	Rod Lym

THE 2014 WSSA/CWSS-SCM PROGRAM

Welcome to the 2014 joint meeting of the Weed Science Society of America (WSSA) and the Canadian Weed Science Society/Société canadienne de malherbologie (CWSS/SCM) at the Hyatt Regency Vancouver. We have a very full venue with a broad diversity of topics.

The General Session and Awards Ceremony will begin at 4:00 pm in Regency D/E/F. Our keynote speaker is Dr. Sam Chan, an Assistant Professor at Oregon State University. Dr. Chan is Oregon Sea Grant's expert in aquatic invasive species and aquatic ecosystem health and will give a fascinating talk on the movement of invasive marine species to the west coast of the US on debris deposited in the ocean from the Japan tsunami a couple of years ago. The Awards Ceremony will include the presentation of the WSSA Awards, as well as the CWSS/SCM Fellow awards. We hope you will attend this session to honor these deserving awardees from both Societies. Following the Awards Ceremony, WSSA will host an Awards Reception beginning at 6:00 pm. All registered attendees from both societies are welcome and encouraged to attend. Please be sure spouses and friends that accompany you have registered so that they may attend this fun event.

This year there are 393 presentations of which 125 are posters. There will be two poster sessions: Tuesday and Wednesday, 8 – 10 am. This year we will provide coffee at the poster session, based on several comments from the survey that we took careful note of. Authors of even numbered posters should be present at the Tuesday poster session and authors of odd numbered posters should be present at the Wednesday poster session. Oral presentations will begin at 10 am on Tuesday and Wednesday morning and at 8 am on Thursday morning. Oral presentations will also continue from 1 – 5 pm on Tuesday and Wednesday afternoon, but on Thursday the conference will adjourn at noon.

The third annual Presidents Uniform Fitness Forum (PUFF) will take place at 7:30 am on Tuesday. The PUFF is an all-inclusive run/walk to start the day with your fellow weed scientists.

The CWSS/SCM Graduate Student Paper Contest will take place on Tuesday. These papers will be in a separate concurrent session. A total of 20 graduate students have

signed up for the contest. Anyone may attend this session to listen to and ask questions about some of the interesting and varied research the CWSS/SCM graduate students and their advisors are conducting. The award winners for the oral presentations will be announced at the CWSS/SCM Awards Luncheon on Wednesday from noon – 1:30 pm.

There are four very interesting symposia and two excellent workshops at this meeting. The first workshop “Use of linear and nonlinear regression in physical, chemical and biological weed control” will be all day and is scheduled for Sunday, February 2. There is a symposium scheduled for each day of the conference. The first symposium is “Turf wars and the emergence of pesticide bans in Canada and the US” that will be on Tuesday afternoon. This symposium was organized by Jenny Kao-Kniffin. The goal of the symposium is to link Canadian and American turf scientists together to discuss the development of alternative weed management techniques that utilize non-chemical or organic methods for turf establishment and maintenance. On Wednesday afternoon, there will be two symposia. The first, “Vulnerability of the Pacific Northwest to plant invasions”, is organized by David Clements, the current President of CWSS/SCM. The symposium will review the general vulnerability of the Pacific Northwest region to invasion, highlight cases involving invasive plants, and evaluate the response by researchers and managers. Concurrently, a second symposium, “Bioherbicides: Current status and the future prospects”, has been organized by Steve Duke and Franck Dayan. This symposium brings together innovators in the area of bioherbicide development and discusses some of the potential products and their utility. Finally, on Thursday morning there is a symposium on “Addressing global herbicide resistance issues – industry perspective and initiatives.” The symposium is organized by Mark Peterson, John Soteris and Harry Streck and will focus on the role of industry in addressing herbicide resistance and the initiatives they are taking to prevent and manage resistance.

The graduate student luncheon will be on Tuesday, and on Wednesday morning, there will be a graduate student professional development workshop. The guest speaker will be Dr. Michael Dunphy who has a background in biochemistry. He is known to be a very dynamic speaker and will give a presentation entitled, “Optimizing performance as a professional and professional work-life harmony tactics.”

The WSSA Business Meeting will be held Tuesday from 5 - 6 pm where Jim Kells will give an overview of the society activities in the past year. The CWSS/SCM Business Meeting will be held on Thursday morning from 6:30 – 8 am.

Special thanks to our Local Arrangements Chair Victoria Brookes, who did the bulk of the organizing for the two tours (winery and botanical garden) and other activities. Thanks should also be given to the many section chairs for their efforts to help organize the meeting. This includes Prashant Jha, Todd Gaines, Peter Dittmar, Ramon Leon, Darrin Dodds, Greta Gramig, Mahesh Upadhyaya, Rakesh Chandran, Greg Dahl, Kyle Keller, Andrew Skibo, Craig Ramsey, Bill Bruckart, Chris Benedict, Andrew Ezell, and Michael Bowers. Also, let Joyce Lancaster of Allen Press know how much you appreciate the work she does, not only on the annual meeting, but all of the Society's business. She really is the workhorse and the engine for the society.

We hope you find this year's annual meeting especially useful and rewarding. We have attempted to schedule something of interest for everyone each day.

Joe DiTomaso, 2014 WSSA Program Chair

Hugh Beckie, 2014 CWSS/SCM Program Chair

2014 Program Committee

General Program Chairs.....	Joe DiTomaso, Hugh Beckie
Vice Chair	Dallas Peterson
Agronomic Crops.....	Prashant Jha
Horticultural Crops	Peter Dittmar
Turf and Ornamentals	Ramon Leon
Pastures, Rangelands, Forests, & Rights-of-Way.....	Andy Ezell
Wildland and Aquatic Invasives.....	Andrew Skibo
Regulatory Aspects	Craig Ramsey
Teaching and Extension	Darrin Dodds
Formulation, Adjuvant, & Application Technology	Greg Dahl
Weed Biology and Ecology.....	Greta Gramig
Biocontrol of Weeds.....	Bill Bruckart
Physiology.....	Todd Gaines
Soil and Environmental Aspects	Kyle Keller
Integrated Weed Management.....	Chris Benedict
Sustaining Member Exhibits Session.....	Jim Steffel
Poster Sessions.....	Rakesh Chandran

General Information

Hotel

A classic, reborn. Hyatt Regency Vancouver, renowned for its exemplary service and attentive staff, now welcomes guests with a fresh new look in its prime location. This gracious hotel in downtown Vancouver boasts well-appointed newly renovated guestrooms with contemporary styling, unmatched meeting and convention facilities and tantalizing dining options. Surrounded by the bustling business center, moments from shops and entertainment, our luxurious downtown Vancouver hotel is the ideal starting point to explore everything this dynamic city offers. Whether attending a conference or enjoying a vacation, discover why we are the unsurpassed choice among hotels in Vancouver, British Columbia.

Help green the planet with a stay at Hyatt to be awarded the highest rating of Five Keys by the HAC Green Key Program, our Vancouver Hyatt uses the services of Bullfrog Power (100% green electricity from wind power) for all its meeting rooms.

All Accommodations Offer:

- Hyatt Grand Bed™
- High-speed wired & wireless internet

- 42” high definition LED Television with remote control, cable, pay movies
- Video checkout, video account review
- Voicemail, telephone with message light, two-line data port phones
- Individual climate control
- Electronic door lock
- In-room laptop-sized safe
- Turndown service available upon request
- Full bath amenities; hair dryer; bathrobes
- Coffeemaker
- In-room refrigerator
- Iron / ironing board
- iHome® stereo with MP3 docking station
- Currency exchange at front desk

Let the luxurious Hyatt Regency Vancouver be your ideal starting point to explore everything this dynamic city offers. Freshly updated to reflect the excitement and vibrancy of Vancouver, our hotel is surrounded by the bustling business centre and within close proximity of the unique shops of Robson Street, the greenery of Stanley Park, the Vancouver Convention Centre, and Rogers Arena, home of the National Hockey League’s Vancouver Canucks. For business travel or vacation, reward yourself with a stay at the favored choice of hotels in Vancouver, British Columbia.

The Hyatt Regency is making available 20 student rooms each night at the reduced rate of CAD \$99.00 single occupancy/\$129.00 double occupancy. This is first-come, first-served so you need to reserve these early. Student reservations will be cross-checked with the registrant list to ensure that only those who qualify for the rooms obtain them. Valid student ID’s will need to be presented upon check-in.

Reservations

One of the reasons we have been able to retain relatively low meeting registration costs is that we receive free meeting space from the hotel if we achieve our contracted guest room minimum. However, we are charged attrition fees & meeting space rental fees if we do not meet this threshold. Thus, your reservation at the Hyatt Regency Vancouver, rather than another location, ensures the success of the meeting for the Societies and enables us to keep registration rate increases to a minimum in the future.

As part of our contract, we've negotiated complimentary guestroom internet for all attendees staying at the hotel—typically a cost of CAD \$9.95/day, along with complimentary access to the Fitness Centre. Additionally, our discounted room rates will be available three days pre- and post-conference (with hotel availability) should you wish to extend your stay in Vancouver.

To make reservations online, visit: <https://resweb.passkey.com/go/wssa2014annualmtg>. If you'd prefer to reserve your room via phone, please call: 1-888-421-1442 (North America) or 1-402-592-6464 (International)—be sure to mention “WSSA” in order to get the discounted rate.

Our discounted block is available through **Monday, January 6, 2014**. Reservation requests received after the cut-off date will be based on availability & may be subject to the hotel's prevailing rates.

Check-in time at the Hyatt Regency is 4 p.m. with check-out at noon. While the hotel does not require a deposit, a credit card will need to be provided as a guarantee. Should you need to cancel your reservation, please do so by 4 p.m. (Pacific time), 24 hours prior to the date of arrival to avoid a penalty charge of one night room and tax.

Transportation

Taxi service from the Vancouver International Airport generally runs about \$35 CAD. Most taxis accept credit cards.

A low fare option for transportation to/from the airport is the SkyTrain Light Rail. Vancouver's SkyTrain is the oldest and one of the longest automated driverless light rapid transit systems in the world. The Expo and millennium SkyTrain Lines connect downtown Vancouver with the cities of Burnaby, New Westminster and Surrey. The Canada Line connects downtown Vancouver to the Vancouver International Airport (YVR) and the city of Richmond. It's roughly a 30 minute trip between the airport & Hyatt Regency and costs \$9 CAD (passes can be purchased at the SkyTrain station); the return trip is \$ 4 CAD – you will need to know that you are passing through two zones. The airport's website has information regarding where the train can be accessed; from there you get on the train at the YVR-Airport Station Eastbound to the Waterfront and get off at the City Center station, taking Georgia Street to Burrard Street, where the Hyatt Regency is located.

Driving Directions:

From Vancouver International Airport (YVR)

10 miles/16 kilometres):

Take Grant McConnachie Way over the Arthur Lang Bridge. Exit Granville Street and proceed north (about 10 km). Turn left at 16th Avenue. Go down two blocks and turn right on Burrard Street. Proceed on Burrard and over Burrard Street Bridge to Georgia Street (10 blocks). Hyatt Regency Vancouver is on your left.

From Seattle (approx 140 miles/225 kilometres):

Proceed on I-5 through Peace Arch border crossing. Continue on Highway 99 on Canadian side and follow it for approximately 20 miles/35 kilometres through the municipalities of Surrey and then Richmond. Highway will turn into Oak Street Bridge and then Oak Street. Follow it to 49th Avenue and turn left. Go right on Granville Street and then follow instructions as above.

From Eastern Suburbs:

Exit Highway 1 at 1st Avenue. Hotel is approximately 6 miles/10 km from exit. Follow 1st Avenue which at Clark Drive turns into Terminal Avenue. Follow Terminal Avenue and turn right on to Main Street. Stay on Main Street for 3 blocks and follow signs to downtown Vancouver. Exit left on to Dunsmuir Viaduct. Follow Dunsmuir past Rogers Arena, stay on Dunsmuir for approximately 10 blocks, and then turn left on Burrard Street. Hyatt Regency Vancouver is one block up on the right.

Program Booklet and Abstracts

All those registering for the annual meeting will receive a program booklet. The program will be mailed to those US attendees registering before January 10, 2014. Canadian, International, and on-site registrants will receive programs at the meeting registration desk. To find the time and location of specific papers, look up the author in the author index in the back of the program. For those of you receiving programs in the mail, please bring these with you to the meeting as we only print enough to accommodate any additional on-site registrants.

CWSS/SCM MEETINGS

MONDAY, February 3

8:30 a.m. – 3:00 p.m.

CWSS/SCM Board of Directors Meeting..... Cypress

6:00 p.m. – 6:30 p.m.

CWSS/SCM Board of Directors and Graduate Student
Meet and Greet..... Georgia A

TUESDAY, February 4

10:00 a.m. – noon

CWSS/SCM Graduate Student Presentation Contest
.....Plaza B

12:00 noon – 1:00 p.m.

CWSS-SCM/WSSA Grad Student Luncheon
..... Balmoral

1:00 p.m. – 5:00 p.m.

CWSS/SCM Grad Student Presentation Contest
.....Plaza B

WEDNESDAY, February 5

7:00 a.m. – 8:00 a.m.

CWSS/SCM Local Arrangements Breakfast
..... Constable

10:00 a.m. – noon

CWSS-SCM/WSSA Graduate Student Workshop
..... Regency D

10:00 a.m. – noon

PMRA, CFIA Regulatory Issues & Provincial Weed
ReportsRegency E

12:00 noon – 1:30 p.m.

CWSS/SCM Awards Luncheon Grouse

7:00 p.m. – 9:00 p.m.

CWSS/SCM Industry Reception Georgia AB & Foyer

THURSDAY, February 6

6:30 a.m. – 8:00 a.m.

CWSS/SCM Business Meeting Breakfast Georgia AB

12:00 noon – 3:00 p.m.

CWSS/SCM Board of Directors Cypress

WSSA Committee Meetings

SATURDAY, February 1

7:30 a.m. - 5:00 p.m.

Board of Directors..... Stanley

SUNDAY, February 2

7:30 a.m. – 12:00 noon

Board of Directors..... Stanley

1:00 p.m. – 5:00 p.m.

WERA 60..... Georgia A

MONDAY, February 3

7:00 a.m. – 8:00 a.m.

WSSA Board and Committee Chairs Breakfast

..... Balmoral

8:00 a.m. – 9:00 a.m.

Invasive Plant Science & Management Editorial Board

(P4)

..... Plaza BC

8:00 a.m. – 10:00 a.m.

Herbicide Handbook (P6)..... Kensington

8:00 a.m. – 10:00 a.m.

Environmental Aspects of Weed Management (E8)

..... Cavendish

8:00 a.m. – 10:00 a.m.

Extension (W11)..... Brighton

8:00 a.m. – 10:00 a.m.

Herbicide Resistance Education (S71)..... Plaza A

8:00 a.m. – 12:00 noon

WERA-60..... Georgia A

9:00 a.m. – 10:00 a.m.

Weed Technology Editorial Board (P3)..... Plaza BC

10:00 a.m. – 11:00 a.m.

Weed Science Editorial Board (P2)..... Plaza BC

10:00 a.m. – 12:00 noon

Science Policy (E2)..... Plaza A

10:00 a.m. – 12:00 noon

Research & Competitive Grants (E6)..... Windsor

11:00 a.m. – 12:00 noon

Publications Board (P1)..... Plaza BC

- 12:00 noon – 1:00 p.m.
 Photo Contest (W3j)Constable
- 1:00 p.m. – 2:00 p.m.
 Biological Control of Weeds (W16).....Lord Byron
- 1:00 p.m. – 3:00 p.m.
 Website (E14)..... Windsor
- 1:00 p.m. – 3:00 p.m.
 WERA 60 and Herbicide Resistant Plants (E12)
 Georgia A
- 1:30 p.m. – 2:30 p.m.
 Public Awareness (E13)Cavendish

WEDNESDAY, February 5

- 6:00 a.m. – 8:00 a.m.
 National and Regional Presidents Breakfast
Seymour
- 7:00 a.m. – 9:00 a.m.
 Finance Committee (F1) Cavendish

THURSDAY, February 6

- 12:00 noon – 1:30 p.m.
 Board of Directors..... Stanley

WSSA Committee meetings are open to all WSSA members. However, some non-WSSA committee meetings (e.g., Herbicide Resistance Action Committee) are open only to invited participants. If in doubt, check at the beginning of the meeting with the Committee Chair.

Contact Joyce Lancaster, Executive Secretary, at jlancaster@allenpress.com to arrange space for committee meetings or room assignments not scheduled in this program.

SUMMARY OF 2014 PROGRAM

SATURDAY MORNING, February 1

- 7:30 a.m. – 5:00 p.m.
 WSSA Board of Directors Stanley

SUNDAY MORNING, February 2

- 7:30 a.m. – 12:00 noon
 WSSA Board of Directors Stanley
- 8:00 a.m. – 5:00 p.m.
 Linear/Nonlinear Regression Workshop Georgia B

12:30 p.m. – 5:30 p.m.

Tours (Wine Tour and UBC Botanical Gardens Tour)

.....Tour participants meet in Hotel Lobby

1:00 p.m. – 5:00 p.m.

WERA 60 Committee Georgia A

MONDAY MORNING, February 3

7:00 a.m. – 8:00 a.m.

WSSA Board & Committee Chairs Breakfast.... Balmoral

9:00 a.m. – 12:00 noon

Registration Regency Foyer

12:00 noon – 1:00 p.m

WSSA Photo Contest Judging Constable

MONDAY AFTERNOON, February 3

1:00 p.m. – 3:00 p.m.

Registration Regency Foyer

4:00 p.m. – 6:00 p.m.

General Session and WSSA Awards/CWSS-SCM Fellow
Award Presentations.....Regency DEF

6:00 p.m. – 8:00 p.m.

WSSA/CWSS-SCM Opening Reception

..... Balmoral/Regency Foyer
(Open to all registrants)

6:00 p.m. – 6:30 p.m.

CWSS/SCM BOD/Graduate Student Meet & Greet

..... Georgia A

TUESDAY MORNING, February 4

7:30 a.m.

Annual PUFF Event Meet in Hotel Lobby

7:00 a.m. – 12:30 p.m.

Registration Regency Foyer

7:45 a.m. – 8:00 a.m.

Poster Session Business Meeting Regency ABC

8:00 a.m. – 10:00 a.m.

Poster Session Regency ABC

Authors of even-numbered posters will be present.

8:00 a.m. – 5:00 p.m.

Exhibits Regency ABC

10:00 a.m. – 5:00 p.m.

Posters on display without authors Regency ABC

10:00 a.m. – 12:00 noon
 CWSS/SCM Graduate Student Presentation Contest
Plaza B

10:00 a.m. – 12:00 noon
 NIFA Supported ResearchPlaza A

10:00 a.m. – 11:45 a.m.
 3. Turf & Ornamentals..... Georgia B

10:00 a.m. – 11:15 a.m.
 6. Regulatory Aspects.....Plaza C

10:00 a.m. – 12:00 noon
 9. Weed Biology & EcologyRegency E

10:00 a.m. – 12:00 noon
 11. Physiology Georgia A

TUESDAY AFTERNOON, February 4

12:00 noon – 1:00 p.m.
 Graduate Student Luncheon (WSSA/CWSS-SCM students)
 Balmoral

1:30 – 4:00 p.m.
 Registration Regency Foyer

1:00 p.m. – 5:00 p.m.
**Symposium: Turf Wars & the Emergence of Pesticide
 Bans in Canada & the US..... Regency D**

1:00 p.m. – 4:15 p.m.
 CWSS/SCM Graduate Student Presentation ContestPlaza B

1:00 p.m. – 2:45 p.m.
 NIFA Supported ResearchPlaza A

1:00 p.m. – 5:00 p.m.
 1. Agronomic CropsRegency F

1:00 p.m. – 3:30 p.m.
 4. Pasture, Rangeland, Forests & Rights of Way Plaza C

1:00 p.m. – 5:00 p.m
 9. Weed Biology & EcologyRegency E

1:00 p.m. – 5:00 p.m.
 13. Integrated Weed Management Georgia B

5:00 p.m. – 6:00 p.m.
 WSSA Business Meeting..... Georgia A

WEDNESDAY MORNING, February 5

6:00 a.m. – 8:00 a.m.
 WSSA Regional Presidents BreakfastSeymour

- 7:00 a.m. – 8:00 a.m.
 CWSS/SCM Local Arrangements Constable
- 7:30 a.m. – 12:00 noon
 Registration Regency Foyer
- 8:00 a.m. – 10:00 a.m.
 Poster Session Regency ABC
 Authors of odd-numbered posters will be present
- 8:00 a.m. – 5:00 p.m.
 Sustaining Members Exhibits Regency ABC
- 10:00 a.m. – 5:00 p.m.
 Posters on display without authors..... Regency ABC
- 10:00 a.m. – 12:00 noon
Graduate Student Workshop..... Regency D
 (All WSSA/CWSS-SCM students welcome)
- 10:00 a.m. – 12:00 noon
 PMRA, CFIA Regulatory Issues and Provincial Weed
 Reports Regency E
- 10:00 a.m. – 12:00 noon
 1. Agronomic Crops Regency F
- 10:00 a.m. – 11:30 a.m.
 3. Turf & Ornamentals..... Georgia B
- 10:00 a.m. – 12:00 noon
 8. Formulation, Adjuvant & Application Technology
 Plaza A
- 10:00 a.m.- 11:15 a.m.
 10. Biocontrol of Weeds Plaza B
- 10:00 a.m. – 11:00 a.m.
 12. Soil & Environmental Aspects Plaza C

WEDNESDAY AFTERNOON, February 5

- 12:00 noon – 1:30 p.m.**
CWSS/SCM Awards Luncheon..... Grouse
- 1:00 p.m. – 3:00 p.m.
 Registration Regency Foyer
- 1:45 p.m. – 5:00 p.m.
**Symposium: Vulnerability of the Pacific Northwest to
 Plant Invasions**..... Regency D
- 1:00 p.m. – 5:00 p.m.
**Symposium: Bioherbicides: Current Status and the
 Future Prospects**..... Plaza B

- 1:00 p.m. – 5:00 p.m.
 1. Agronomic CropsRegency F
- 1:00 p.m. – 4:00 p.m.
 2. Horticultural Crops.....Plaza A
- 1:00 p.m. – 4:15 p.m.
 9. Weed Biology & EcologyRegency E
- 1:00 p.m. – 5:00 p.m.
 13. Integrated Weed ManagementPlaza C
- 7:00 p.m. – 9:00 p.m.
 CWSS/SCM Industry Reception (CWSS/SCM Attendees
 and Ticketed Guests).....Georgia AB & Foyer

THURSDAY MORNING, February 6

- 6:30 a.m. – 8:00 a.m.
 CWSS/SCM Business Meeting BreakfastGeorgia AB
- 7:00 a.m. – 10:00 a.m.
 Registration Regency Foyer
- 8:00 a.m. – 12:00 noon
 Poster Session: Posters without authors available for
 viewing..... Regency ABC
- 8:00 a.m. – 12:00 noon
 Sustaining Members Exhibits Regency ABC
- 8:00 a.m. – 12:00 noon
**Symposium: Addressing Global Herbicide Resistance
 Issues** Regency D
- 8:00 a.m. – 11:00 a.m.
 1. Agronomic CropsRegency F
- 8:00 a.m. – 10:45 a.m.
 5. Wildland & Aquatic InvasivesPlaza B
- 8:00 a.m. – 11:15 a.m.
 7. Education & Extension.....Plaza C
- 8:00 a.m. – 12:00 noon
 11. PhysiologyRegency E

12:00 noon – 2:00 p.m.
Dismantle Posters and Exhibits

THURSDAY AFTERNOON, February 6

- 12:00 noon – 1:30 p.m.
 WSSA Board of Directors Stanley
- 12:00 noon – 3:00 p.m.
 CWSS/SCM Board of Directors Cypress

COMPLETE PROGRAM

MONDAY PM, February 3 GENERAL SESSION

Location: Regency DEF

Chairs: Joe DiTomaso and Hugh Beckie

4:00 p.m.

Introduction and Announcements, Joe DiTomaso, President-Elect, WSSA, Hugh Beckie, President-Elect, CWSS/SCM

4:10 p.m.

Welcome: The Honorable Judith Guichon, OBC

4:25 p.m.

Keynote Address: Dr. Samuel Chan, Oregon State University, “Emerging Concerns for a Natural Disaster Driven Invasive Species Pathway in the Modern Era: Hitchhiking Organisms on Japanese Tsunami Debris”.

4:50 p.m.

Presentation of WSSA Awards, Dwight Lingenfelter, Chair, Awards Committee, WSSA

5:20 p.m.

Presentation of WSSA Fellow Awards, Jodie Holt, Chair, Fellows and Honorary Member Subcommittee, WSSA

5:40 p.m.

Presentation of CWSS/SCM Fellow Awards, Chris Willenborg, Chair, Awards Committee, CWSS/SCM

6:00 p.m. - 8:00 p.m.

WSSA/CWSS-SCM Joint Reception

Balmoral & Regency Foyer

MONDAY PM to THURSDAY February 3 to 6

WSSA SUSTAINING MEMBERS EXHIBITS SESSION

Location: Regency ABC

Chair: Steve Gylling, Gylling Data Management, Inc.

7:45 a.m. Tuesday

Sustaining Members Exhibits Session meeting to elect a Chair-Elect.

Setup 12:00 noon - 3:00 p.m. Monday

8:00 a.m. - 5:00 p.m. Tuesday

8:00 a.m. - 5:00 p.m. Wednesday

8:00 - 12:00 noon Thursday

Please remove exhibits by 2:00 p.m. on Thursday

Sustaining Member Exhibitor and Representative

DuPont Crop Protection Craig Alford

Greenleaf Technologies Will Smart

Gylling Data Management Steve & Fran Gylling

LABServices James Steffel

TUESDAY AM, February 4

Poster Session

Location: Regency ABC

Chair: Rakesh Chandran

Posters may be set up on Monday from 12:00 noon until 3:00 pm prior to the General Session. Authors should remove Posters before 2:00 pm on Thursday afternoon.

7:45 a.m. – 8:00 a.m.

Business Meeting to elect Chair-Elect

8:00 a.m. – 10:00 a.m.

Authors of even-numbered posters will be present.

10:00 a.m. – 5:00 p.m.

Posters open for viewing without authors

TUESDAY MORNING FEBRUARY 4

Section 1. Agronomic Crops

***PRESENTER**

Evaluating Leaf Hyperspectral Reflectance Data to Discriminate Four Soybean Varieties from Three Weed Species. R. S. Fletcher*, S. J. Thomson, K. N. Reddy; USDA-ARS, Stoneville, MS (1)

Relating Early Season Ground Cover to Yield Loss in Soybean Using Image Analysis. P. Gregoire*, R. H. Gulden; University of Manitoba, Winnipeg, MB (2)

Pollen-mediated Gene Flow between Glyphosate-resistant *Brassica napus* Canola and *B. juncea* and *B. carinata* Mustard Crops under Large-scale Field Conditions. G.

Seguin-Swartz¹, H. J. Beckie*¹, S. I. Warwick², V. Roslinsky¹, J. A. Nettleton¹, E. N. Johnson³, K. C. Falk¹; ¹Agriculture and Agri-Food Canada, Saskatoon, SK, ²Agriculture and Agri-Food Canada, Ottawa, ON, ³Agriculture and Agri-Food Canada, Scott, SK (3)

Soybean Genes Affected by Early Season Weed Interference. S. A. Clay*¹, S. A. Hansen¹, D. Horvath²; ¹South Dakota State University, Brookings, SD, ²USDA-ARS, Fargo, ND (4)

Balance GT Soybean Performance in Kentucky. S. Lawson*¹, C. Slack¹, M. Waddington²; ¹University of Kentucky, Lexington, KY, ²Bayer CropScience, Owensboro, KY (5)

Summary of Results Related to Weed Management in FG72 Soybean in Missouri. E. B. Riley*, J. Schultz, K. W. Bradley; University of Missouri, Columbia, MO (6)

Late-season Weed Management with In-crop and Postharvest Herbicides in Twin-row Glyphosate-resistant Soybean. K. N. Reddy*, C. T. Bryson; USDA-ARS, Stoneville, MS (7)

Development of Imidazolinone Tolerance in Faba Bean. D. Mao*¹, J. Paull², K. Oldach³, C. Preston⁴, P. Davies³, L. McMurray¹; ¹South Australian Research and Development Institute, Clare, Australia, ²University of Adelaide, Adelaide, Australia, ³South Australian Research and Development Institute, Adelaide, Australia, ⁴University of Adelaide, Glen Osmond, Australia (8)

Glufosinate Metabolism in Transgenic Wheat. A. M. Rojano¹, F. Priego-Capote¹, M. Luque De Castro¹, F. Barro², R. De Prado*¹; ¹Universidad de Cordoba, Cordoba, Spain, ²CSIC, Cordoba, Spain (9)

Herbicide Resistant Weeds in Europe. I. M. Heap*; WeedSmart, Corvallis, OR (10)

Current Status of Glyphosate Resistant Weeds in Europe. F. Gonzalez-Torralva*¹, J. A. Dominguez-Valenzuela², J. Costa³, I. Brants⁴, R. De Prado¹; ¹Universidad de Cordoba, Cordoba, Spain, ²Chapingo Autonomous University, Texcoco, Mexico, ³Monsanto, Madrid, Spain, ⁴Monsanto, Brussels, Belgium (11)

Multiple-Resistant Palmer Amaranth Management Strategies in Corn. J. R. Kohrt*, C. L. Sprague; Michigan State University, East Lansing, MI (12)

Management of Glyphosate-Resistant Palmer Amaranth in Cotton Using Cover Crops and Herbicides. M. S. Wiggins*, R. M. Hayes, L. Steckel; University of Tennessee, Jackson, TN (13)

Palmer Amaranth and Texas Millet Control in Bollgard II XtendFlex™ Cotton. P. A. Dotray*¹, J. W. Keeling², T. S. Morris², R. M. Merchant³, M. R. Manuchehri³, J. D. Everitt⁴; ¹Texas Tech Univ., Texas A&M AgriLife Research and Extension, Lubbock, TX, ²Texas A&M AgriLife Research, Lubbock, TX, ³Texas Tech Univ, Lubbock, TX, ⁴Monsanto, Lubbock, TX (14)

Cotton Response and Palmer Amaranth Control Following Pyrasulfotole Plus Bromoxynil Applied Postemergence-directed. T. S. Morris*¹, P. A. Dotray², J. W. Keeling¹, W. R. Perkins³; ¹Texas A&M AgriLife Research, Lubbock, TX, ²Texas Tech University, Lubbock, TX, ³Bayer CropScience, Idalou, TX (15)

Palmer Amaranth Control with Saflufenacil at Burndown in NW Argentina. S. Sabate*¹, H. F. Vinciguerra², I. L. Olea²; ¹Estacion Experimental Agroindustrial Obispo Colombres, Tucuman, Argentina, ²Estacion Experimental Agroindustrial Obispo Colombres, Las Talitas, Argentina (16)

Chemical Alternatives to Provide Effective Control of Glyphosate Resistant Sourgrass. R. S. Oliveira*, A. Gemelli, J. Constantin; Universidade Estadual de Maringa, Maringa, Brazil (17)

Glyphosate-resistant Canada Fleabane Control in Enlist Corn. N. Soltani*, L. Ford, P. H. Sikkema; University of Guelph, Ridgetown, ON (18)

Simulating the Evolution of ALS Resistance in Shattercane. R. Werle*¹, M. Renton², A. Jhala¹, J. L. Lindquist¹; ¹University of Nebraska, Lincoln, NE, ²The University of Western Australia, Crawley, Australia (19)

Assessment of Double-Crop and Relay-Intercropping Systems of Peanut with Clearfield Wheat and Residual

Herbicides. J. W. Moss*¹, R. S. Tubbs², N. B. Smith², T. L. Grey², J. W. Johnson³; ¹Auburn University, Auburn, AL, ²University of Georgia, Tifton, GA, ³University of Georgia, Griffin, GA (20)

Wheat Response to Tank Mixing Fungicides with Pyroxsulam Formulations and 2,4-D. J. P. Yenish*¹, P. Prasifka²; ¹Dow AgroSciences, Billings, MT, ²Dow AgroSciences, West Fargo, ND (21)

Non-Target Mechanisms to Imazamox in Wheat. A. M. Rojano¹, A. I. Jurado¹, F. Jiménez², R. De Prado*¹; ¹Universidad de Cordoba, Cordoba, Spain, ²INIAF, Bonao, Dominican Republic (22)

Kochia Management with Herbicides Applied Postharvest in Wheat Stubble. V. Kumar*, P. Jha, A. V. Varanasi, S. Leland; Montana State University, Huntley, MT (23)

Winter Barley Tolerance to Flufenacet and Pyroxasulfone. J. Campbell*¹, D. Morishita², T. Rauch¹, D. Thill¹; ¹University of Idaho, Moscow, ID, ²University of Idaho, Kimberly, ID (24)

Effects of Growth Regulator Rate and Application Timing on Sorghum Growth and Yield. T. E. Besancon*, W. J. Everman, R. Riar; North Carolina State University, Raleigh, NC (25)

Safeners for Clomazone in Canola. W. K. Vencill*¹, T. L. Grey², E. P. Prostko²; ¹University of Georgia, Athens, GA, ²University of Georgia, Tifton, GA (26)

Pod-drop and Pod-shatter are not Related in *Brassica napus*. A. Cavalieri*, D. W. Lewis, R. H. Gulden; University of Manitoba, Winnipeg, MB (27)

Early and Late Postemergence Weed Control in Sugarcane. D. Odero¹, G. Montes², N. Havranek*¹; ¹University of Florida, Belle Glade, FL, ²Florida Crystal Corporation, South Bay, FL (28)

Persistence of Summer Applied Soil Residual Herbicides to Autumn-planted Energy Beet. T. L. Grey*¹, T. M. Webster², B. Scully²; ¹University of Georgia, Tifton, GA, ²USDA-ARS, Tifton, GA (29)

Desiccation and Yield of Three Black Bean Varieties. A. M. Goffnett*, C. L. Sprague; Michigan State University, East Lansing, MI (30)

Sensitivity of Cranberry and Kidneybeans to Linuron. N. Soltani*, C. Shropshire, P. H. Sikkema; University of Guelph, Ridgetown, ON (31)

Peanut Cultivar Response to Pyroxasulfone Applied Preemergence. P. M. Eure*, E. P. Prostko; University of Georgia, Tifton, GA (32)

Investigating Glyphosate Efficacy for Control of Pokeweed in Pennsylvania Field Crops. K. M. Patches*, W. Curran; Penn State University, University Park, PA (33)

Effect of Spray Tip and Herbicide Program on Efficacy, Droplet Size, and Coverage. D. M. Dodds*¹, D. Z. Reynolds¹, C. Samples¹, T. Dixon¹, G. Kruger², J. Mills³; ¹Mississippi State University, Mississippi State, MS, ²University of Nebraska, North Platte, NE, ³Monsanto, Collierville, TN (34)

Section 2. Horticultural Crops

*PRESENTER

Evaluation of an Organic Reduced Tillage System in the Pacific Northwest and the Influence on Weed Populations. C. A. Benedict*¹, S. Wayman², D. Collins³, C. Cogger², A. Bary², A. Corbin⁴; ¹Washington State University, Bellingham, WA, ²Washington State University, Puyallup, WA, ³Washington State University Extension, Puyallup, WA, ⁴Washington State University, Everett, WA (35)

Cost Analysis of Alternative Treatments for Managing Glyphosate-resistant *Conyza* spp. in Orchards and Vineyards of California. S. Konduru¹, M. Jasieniuk², B. D. Hanson², K. Hembree³, S. D. Wright⁴, A. Shrestha*¹; ¹California State University, Fresno, CA, ²University of California, Davis, CA, ³University of California Cooperative Extension, Fresno, CA, ⁴University of California Cooperative Extension, Tulare, CA (36)

Environmental Impact of Different Weed Control Systems in Organic Vineyards in the San Joaquin Valley. S. Konduru, K. Kurtural, A. Shrestha*; California State University, Fresno, CA (37)

Rye Cover Crop as an Economic Weed Management Option in Sweet Corn and Spaghetti Squash Production.

C. Bouladier Laprade¹, D. L. Benoit*², G. Leroux¹;
¹Universite Laval, Quebec, QC, ²Agriculture and Agri-Food Canada, Saint-Jean-sur-Richelieu, QC (38)

Heavy Rye Cover Crop Residue Influences Weed Control and Melon Production. S. Culpepper, P. M. Eure*; The University of Georgia, Tifton, GA (39)

Cover Crops for Organic Strawberry Cropping Systems. J. N. Dagua¹, C. A. Chase*², J. Lopez²; ¹EARTH University, Guácimo, Costa Rica, ²University of Florida, Gainesville, FL (40)

Evaluation of New Natural Weed Control Products. J. O'Sullivan*¹, R. C. Van Acker², R. D. Grohs¹; ¹University of Guelph, Simcoe, ON, ²University of Guelph, Guelph, ON (41)

Identification of a New Glucosinolate Breakdown Product and its Phytotoxicity Against Seed Emergence and Growth. S. Intanon*, A. G. Hulting, J. F. Stevens, R. L. Reed, C. Mallory-Smith; Oregon State University, Corvallis, OR (42)

Screening Herbicides for Oklahoma Sweet Potato Crops. L. Brandenberger*, D. Williams; Oklahoma State University, Stillwater, OK (43)

Variable Clomazone Tolerance Among Broccoli Cultivars. H. F. Harrison*¹, M. W. Farnham²; ¹USDA-ARS, Charleston, SC, ²U.S. Vegetable Laboratory, Charleston, SC (44)

The IR-4 Project: Update on Weed Control Projects (Food Uses). M. Arsenovic*¹, D. Kunkel², J. Baron²; ¹IR-4 Project, Princeton, NJ, ²IR-4, Rutgers University, Princeton, NJ (45)

Section 3. Turf and Ornamental Crops

***PRESENTER**

Liquid Carbon Dioxide for Selective Weed Control in Established Turfgrass Systems . D. J. Mahoney*, M. Jeffries, T. Gannon; North Carolina State University, Raleigh, NC (46)

Screening for Tolerance to Asulam in St. Augustinegrass and to Fluazifop-P-butyl in Zoysiagrass Germplasm. R. G. Leon*¹, B. Unruh¹, K. E. Kenworthy²; ¹University of Florida, Jay, FL, ²University of Florida, Gainesville, FL (47)

Flumioxazin Tank-Mixtures with Postemergence Herbicides for Annual Bluegrass Control in Bermudagrass. T. Reed, J. Yu*, P. McCullough; University of Georgia, Griffin, GA (48)

Section 4. Pasture, Rangeland, Forest, and Rights of Way

***PRESENTER**

Prioritizing Suitable Habitat for *Mimosa pigra* Growth as a Tool in a Weed Control Plan. W. Robles*¹, R. Gonzalez²; ¹University of Puerto Rico, Mayaguez, Dorado, PR, ²US Fish and Wildlife Service, Cabo Rojo, PR (49)

Efficacy of Three Herbicides for the Control of *Mimosa pigra* in Puerto Rico. M. L. Lugo*¹, W. Robles², Y. Quijano³, R. Couto¹; ¹University of Puerto Rico, Gurabo, PR, ²University of Puerto Rico, Corozal, PR, ³University of Puerto Rico, Mayaguez, PR (50)

Clover, Soybean, and Tobacco Response to Synthetic Auxin Herbicides Following Application to an Orchardgrass Pasture. J. Green*, W. Witt, J. Omielan; University of Kentucky, Lexington, KY (51)

Switchgrass (*Panicum virgatum*) Growth Stage and Atrazine Tolerance. W. M. Churchman*, M. Barrett, D. W. Williams; University of Kentucky, Lexington, KY (52)

Section 5. Wildland and Aquatic Invasive Plants

***PRESENTER**

Inferring the Complex Origins of Horticultural Invasives: French Broom in California. M. Jasieniuk*¹, A. Kleist¹, A. Herrera-Reddy², R. Sforza³; ¹University of California, Davis, CA, ²USDA-ARS, Albany, CA, ³USDA-ARS, St. Gely du Fesc, France (53)

Late Season vs Early Season Selective Control of Winter Creeper (*Euonymus fortunei*). J. Omielan*, W. Witt; University of Kentucky, Lexington, KY (54)

Response of Invasive Swallow-worts (*Vincetoxicum* spp.) to Repeated Artificial Defoliation or Clipping. L. R. Milbrath¹, A. DiTommaso*², J. Biazzo¹, S. H. Morris²; ¹USDA-ARS, Ithaca, NY, ²Cornell University, Ithaca, NY (55)

Climate Drives *Bromus tectorum* Positive Feedback with Fire. K. Taylor¹, T. Brummer², L. J. Rew¹, M. Lavin¹, B. D. Maxwell*¹; ¹Montana State University, Bozeman, MT, ²Lincoln University, Lincoln, New Zealand (56)

Section 6. Regulatory Aspects

No Presentations in this Section

Section 7. Education and Extension

***PRESENTER**

Herbicide Trends Over the Past 15 Years in the Northeastern United States. D. Lingenfelter*, W. Curran; Penn State University, University Park, PA (57)

Manual for Propane-Fueled Flame Weeding in Corn, Soybean, and Sunflower. S. Z. Knezevic*¹, A. Datta², C. Bruening³, G. Gogos³, J. E. Scott⁴; ¹University of Nebraska, Concord, NE, ²Asian Institute of Technology, Bangkok, Thailand, ³University of Nebraska - Lincoln, Lincoln, NE, ⁴University of Nebraska - Lincoln, Concord, NE (58)

Section 8. Formulation, Adjuvant and Application Technology

***PRESENTER**

Effect of Various Organic Emulsifiers on Crop Growth and Weed Control. S. Jang*¹, K. Kim¹, Y. Yun¹, K. Hyun¹, D. Kim², C. A. Mallory-Smith³, A. G. Hulting³, Y. Kuk¹; ¹Sunchon National University, Suncheon, South Korea, ²Jeonnam Agricultural Research and Extension Service, Naju, South Korea, ³Oregon State University, Corvallis, OR (59)

Application Timing, Surfactants and Rates of GF-2819 Herbicide to Wild Buckwheat (*Polygonum convolvulus*) Control in Greenhouses. E. Lopez*¹, A. Bolaños², I. Cruz²; ¹Crop Protection R&D, Guadalajara, Mexico, ²Universidad Autonoma Chapingo, Texcoco, Mexico (60)

The Impact of Sprayer Cleanout Procedure on Dicamba Injury to Soybean. G. Cundiff*¹, D. B. Reynolds², J. B. Guice², W. E. Thomas³; ¹BASF, Raleigh, NC, ²Mississippi State University, Mississippi State, MS, ³BASF Corporation, Research Triangle Park, NC (61)

Section 9. Weed Biology and Ecology

***PRESENTER**

Weed Seed Survival in Corn Silage. M. Simard¹, C. Lambert-Beaudet¹, R. E. Blackshaw*²; ¹Agriculture and Agri-Food Canada, Quebec, QC, ²Agriculture and Agri-Food Canada, Lethbridge, AB (62)

Impact of Cereal Rye and Red Clover on Weed Seed Decay. E. C. Hill*, K. A. Renner, C. L. Sprague; Michigan State University, East Lansing, MI (63)

Comparing Physical, Chemical and Cold Stratification Methods for Alleviating Seed Dormancy in Giant Ragweed (*Ambrosia trifida*). E. R. Page, R. E. Nurse*; Agriculture and Agri-Food Canada, Harrow, ON (64)

Mechanics of the Palmer Amaranth Integrated Management Model (PAM). M. V. Bagavathiannan*¹, J. K. Norsworthy¹, M. Lacoste², S. Powles³; ¹University of Arkansas, Fayetteville, AR, ²University of Western Australia, Perth, Australia, ³University of Western Australia, Crawley, Australia (65)

Comparison of Seed Mortality of Palmer Amaranth and Powell Amaranth in Michigan. D. K. Powell*, C. L. Sprague, K. A. Renner; Michigan State University, East Lansing, MI (66)

The Effects of Delaying Irrigation on Disturbed Soil Seedbanks of Palmer Amaranth (*Amaranthus palmeri*), Yellow Foxtail (*Setaria pumila*) and Junglerice (*Echinochloa colona*). B. J. Schutte*, N. Klypina, V.

Zamora, A. Cunningham, J. Ashigh; New Mexico State University, Las Cruces, NM (67)

Effect of Light Intensity on Growth, Morphology, and Size Hierarchy of Redroot Pigweed (*Amaranthus retroflexus*). R. Gaire*, M. K. Upadhyaya; University of British Columbia, Vancouver, BC (68)

Influence of Plant Density on Size Hierarchy of Common Lambsquarters (*Chenopodium album*) in Absence of Resource Competition. L. Ma*, M. K. Upadhyaya; University of British Columbia, Vancouver, BC (69)

Comparative Growth of Henbit (*Lamium amplexicaule*) Based on Emergence Date. B. C. Woolam*, D. O. Stephenson, IV, R. L. Landry; Louisiana State University AgCenter, Alexandria, LA (70)

Greenhouse Evaluation of Allelopathic Potential of *Conyza canadensis* on Corn and Soybean Seedlings. P. B. Trewatha*, B. Marshall; Missouri State University, Springfield, MO (71)

Dynamics of Weed Emergence in Alternative Rice Irrigation Systems in California. W. B. Brim-DeForest*¹, R. M. Pedrosa¹, L. G. Boddy², B. A. Linquist¹, A. J. Fischer¹; ¹University of California, Davis, CA, ²Marrone Bio Innovations, Davis, CA (72)

Optimizing *Sorghum halepense* Management Through the Use of a Spatial-Temporal Model. J. Barroso¹, T. Brummer², B. D. Maxwell*¹; ¹Montana State University, Bozeman, MT, ²Lincoln University, Lincoln, New Zealand (73)

Quantifying the Relative Invasive Potential of Genetically Modified Crops using Demographic Analysis. D. Clements¹, H. J. Beckie², L. Hall³, R. E. Nurse⁴, M. Simard⁵, L. Raatz³, B. C. Alexander*³; ¹Trinity Western University, Langley, BC, ²Agriculture and Agri-Food Canada, Saskatoon, SK, ³University of Alberta, Edmonton, AB, ⁴Agriculture and Agri-Food Canada, Harrow, ON, ⁵Agriculture and Agri-Food Canada, Quebec, QC (74)

Preliminary Analysis of the EPSPS Amplicon using 454 Sequence Data. D. Giacomini*, P. Westra, S. Ward; Colorado State University, Fort Collins, CO (75)

Myxocarpy in Weedy Species of *Artemisia*. S. J. Darbyshire*¹, G. O. Kegode²; ¹Agriculture and Agri-Food Canada, Ottawa, ON, ²Northwest Missouri State University, Maryville, MO (76)

Confirmation of Molecular Basis for Metribuzin and Terbacil Resistance in Redroot Pigweed (*Amaranthus retroflexus*) and Common Lambsquarters (*Chenopodium album*) Populations from Washington, USA. J. F. Spring*¹, R. A. Boydston², L. Riu³, I. C. Burke¹; ¹Washington State University, Pullman, WA, ²USDA-ARS, Prosser, WA, ³Nanjing Agricultural University, Nanjing, Peoples Republic (77)

Evolution and Spread of Glyphosate Resistance in *Conyza canadensis* and *C. bonariensis* in California Orchards and Vineyards. M. Jasieniuk*¹, M. Okada¹, B. D. Hanson¹, K. Hembree², Y. Peng³, A. Shrestha⁴, N. Stewart³, S. D. Wright⁵; ¹University of California, Davis, CA, ²University of California Cooperative Extension, Fresno, CA, ³University of Tennessee, Knoxville, TN, ⁴California State University, Fresno, CA, ⁵University of California Cooperative Extension, Tulare, CA (78)

Glyphosate and Pyriithiobac Resistant Palmer Amaranth in Arizona. W. B. McCloskey*; University of Arizona, Tucson, AZ (79)

Niche Management with Polycultures of Summer Annual Forage Crops. K. Bybee-Finley¹, M. Ryan*¹, S. Mirsky²; ¹Cornell University, Ithaca, NY, ²USDA-ARS, Beltsville, MD (80)

Variation in *Bromus tectorum* Development Across the Small Grain Production Region of the PNW. N. C. Lawrence*¹, D. A. Ball², I. C. Burke¹; ¹Washington State University, Pullman, WA, ²Oregon State University, Pendleton, OR (81)

Throwing the Baby out with the Bath Water: The Effect of Noxious Weed Control on Plant Diversity in the Sagebrush Steppe. T. Seipel*, E. A. Lehnhoff, L. J. Rew, M. Lavin, B. D. Maxwell; Montana State University, Bozeman, MT (82)

Emergence Characterization of Kochia (*Kochia scoparia*) Accessions from Northern and Central Great Plains. A.

V. Varanasi*, P. Jha, V. Kumar, S. Leland; Montana State University, Huntley, MT (83)

Heavy Metal Accumulation Along Roadsides Influence the Early Establishment of Groundcovers and *Ambrosia artemisiifolia*. J. Bae¹, D. L. Benoit*², A. Watson²; ¹McGill University, Ste. Anne de Bellevue, QC, ²Agriculture and Agri-Food Canada, Saint-Jean-sur-Richelieu, QC (84)

A Presently-undetermined *Meloidogyne* species was Found to Parasitize Yellow and Purple Nutsedge: Should we be Concerned? J. Schroeder*¹, S. Thomas¹, J. Beacham¹, L. Holland², L. Murray³, N. Schmidt¹, S. Hanson¹, E. Morris¹; ¹New Mexico State University, Las Cruces, NM, ²Washington State University, Pullman, WA, ³Kansas State University, Manhattan, KS (85)

Section 10. Biocontrol of Weeds

*PRESENTER

Using Genotyping by Sequencing to Genetically Characterize Global Accessions of the Noxious Weed, *Imperata cylindrica*. M. Burrell*, P. E. Klein; Texas A&M University, College Station, TX (86)

***Fusarium oxysporum* as a Biological Control Agent of *Sorghum halepense* Rhizome Biomass.** G. Lampugnani¹, A. Cecilia¹, C. Monaco¹, H. A. Acciaresi*²; ¹CISaV, La Plata, Argentina, ²Facultad Ciencias Agrarias y Forestales-CISaV, La Plata, Argentina (87)

***Phakopsora* sp. as Possible Biocontrol Agent of *Commelina erecta*.** S. Zuluaga¹, M. Stocco¹, C. Rollan², C. Monaco¹, H. A. Acciaresi*³; ¹CISaV, La Plata, Argentina, ²Fitopatologia, La Plata, Argentina, ³Facultad Ciencias Agrarias y Forestales-CISaV, La Plata, Argentina (88)

Section 11. Physiology

*PRESENTER

EPSPS Gene Transfer from Glyphosate-resistant Palmer Amaranth (*Amaranthus palmeri*) to Spiny Amaranth (*Amaranthus spinosus*). V. K. Nandula*¹, A. A. Wright², W. Molin¹, J. D. Ray¹, J. Bond², T. Eubank²; ¹USDA-ARS, Stoneville, MS, ²Mississippi State University, Stoneville, MS (89)

Mechanism of Mesotrione Resistance in Palmer Amaranth. S. Betha, A. S. Godar*, M. Jugulam; Kansas State University, Manhattan, KS (90)

The Amplicon of EPSP Synthase, an Update. W. Molin*¹, A. A. Wright²; ¹USDA-ARS, Stoneville, MS, ²Mississippi State University, Stoneville, MS (91)

Determination of Glyphosate Sequestration as the Basis of Resistance in Glyphosate-resistant Plants Using an *in vivo* Shikimate Accumulation Assay. J. Ashigh*¹, M. Mohseni-Moghadam², B. J. Schutte¹, A. Shrestha³; ¹New Mexico State University, Las Cruces, NM, ²The Ohio State University, Wooster, OH, ³California State University, Fresno, CA (92)

Accumulation of Shikimic Acid in three *Eucalyptus* Clonal Hybrids in Response to Glyphosate. G. L. Gomes*, C. A. Carbonari, E. D. Velini, D. O. Latorre, P. S. Simões; UNESP - Univ. Estadual Paulista, Botucatu, Brazil (93)

Effects of Glyphosate on Shikimic Acid and Aromatic Amino Acids in Sugar Cane. C. A. Carbonari*, G. L. Gomes, E. D. Velini, G. J. Picoli Jr, A. K. Matos; UNESP - Univ. Estadual Paulista, Botucatu, Brazil (94)

Chemical Specificity Associated with Herbicide Tolerance in AFB5-Deficient *Arabidopsis*. C. L. McCauley*¹, J. L. Bell², P. R. Schmitzer²; ¹Cornell University, Ithaca, NY, ²Dow AgroSciences LLC, Indianapolis, IN (95)

Varying Tolerance to Glyphosate in Palmer Amaranth Plants with Low EPSPS Gene Copy Number. R. E. Hoagland*¹, N. D. Teaster²; ¹USDA-ARS, CPSRU, Stoneville, MS, ²USDA-ARS, Stoneville, MS (96)

Gene Amplification is Not Involved in the Glyphosate Resistant Mechanism of Horseweed from Spain. F. Gonzalez-Torralva*¹, M. J. Giménez², F. Barro², R. De Prado¹; ¹Universidad de Cordoba, Cordoba, Spain, ²Institute for Sustainable Agriculture (CSIC), Cordoba, Spain (97)

Segregation Analysis of Glyphosate-resistant Trait(s) in F2 Populations of Mutagenized Spring Wheat Cultivars. A. Aramrak*¹, I. C. Burke¹, C. M. Steber², A. H. Carter¹, K.

K. Kidwell¹; ¹Washington State University, Pullman, WA, ²USDA-ARS, Pullman, WA (98)

Genetic Basis of Glyphosate Resistance in Kochia (*Kochia scoparia*). K. Niehues*, M. Jugulam; Kansas State University, Manhattan, KS (99)

Screening for Glyphosate-Resistance in Palmer Amaranth (*Amaranthus palmeri*) Populations of California's San Joaquin Valley. S. I. Rios*¹, S. D. Wright², A. Shrestha¹; ¹California State University, Fresno, CA, ²University of California Cooperative Extension, Tulare, CA (100)

Investigation of Multiple Herbicide Resistant *Echinochloa crus-galli* in Mississippi. A. A. Wright*¹, V. K. Nandula², D. Shaw³, J. Bond¹; ¹Mississippi State University, Stoneville, MS, ²USDA-ARS, Stoneville, MS, ³Mississippi State University, Starkville, MS (101)

Mechanism of Multiple-Herbicide Resistance in Kochia (*Kochia scoparia*). A. S. Godar*, V. Varanasi, M. Jugulam; Kansas State University, Manhattan, KS (102)

Differences in Leaf Surface Characteristics as Source of Oxyfluorfen Resistance in a Glyphosate-resistant *Lolium multiflorum* Biotype. J. Menendez*¹, F. Gonzalez-Torralva², P. Fernandez², R. De Prado²; ¹Universidad de Huelva, Huelva, Spain, ²Universidad de Cordoba, Cordoba, Spain (103)

Glyphosate Resistance in Giant Ragweed from Mississippi. V. K. Nandula*¹, A. A. Wright², W. Molin¹, K. N. Reddy¹; ¹USDA-ARS, Stoneville, MS, ²Mississippi State University, Stoneville, MS (104)

Roundup Ready Wheat: What We Have Learned. C. Mallory-Smith*, B. Martins, R. Zemetra, C. Roseborough; Oregon State University, Corvallis, OR (105)

Mode of Action Studies on Dicamba Resistance. D. Sammons*¹, D. Wang¹, E. L. Ostrander², J. Silva¹, J. Haines¹, P. Westra³; ¹Monsanto, St. Louis, MO, ²Washington University, St. Louis, MO, ³Colorado State University, Ft. Collins, CO (106)

Cross-resistance of Broadleaf Weeds to 2,4-D and Dicamba. M. Jugulam*, A. S. Godar; Kansas State University, Manhattan, KS (107)

Antioxidant Response of *Lolium multiflorum* Susceptible and Resistant to Iodosulfuron-methyl Sodium Herbicide.

F. Mariani*¹, L. Vargas², S. A. Senseman³, C. P. Tarouco¹, A. C. Langaro¹, D. Agostinetto¹; ¹Universidade Federal de Pelotas, Pelotas, Brazil, ²Embrapa Trigo/Universidade Federal de Pelotas, Passo Fundo, Brazil, ³University of Tennessee, Knoxville, TN (108)

Fate of Foliar Applied Aminocyclopyrachlor in Aspen.

Y. Duan*, N. C. Lawrence, A. J. Raeder, I. C. Burke; Washington State University, Pullman, WA (109)

The Interactions Between Pyroxasulfone and Sulfentrazone on Sunflower.

D. L. Shaner*¹, E. Westra²; ¹USDA-ARS, Fort Collins, CO, ²Colorado State University, Fort Collins, CO (110)

Section 12. Soil and Environmental Aspects

***PRESENTER**

Impact of Weed Management Systems on Greenhouse Gas Emissions.

A. M. Knight*, W. J. Everman, S. Reberg-Horton, S. Hu; North Carolina State University, Raleigh, NC (111)

Degradation, Mineralization, Sorption and Desorption of Tebuthiuron on the Basis of Two Attributes of Soil Types.

A. R. Dias*¹, M. L. Viti¹, V. L. Tornisielo²; ¹Center of Nuclear Energy in Agriculture - CENA/USP, Piracicaba, Brazil, ²University of São Paulo, Piracicaba, Brazil (112)

Responses of Cotton Growth to Fomesafen and Quantitative Analysis of Fomesafen Field Dissipation in Three Locations of Georgia.

X. Li*¹, T. L. Grey², B. H. Blanchett², W. K. Vencill¹; ¹University of Georgia, Athens, GA, ²University of Georgia, Tifton, GA (113)

Effect of Aging on Aminocyclopyrachlor Sorption in Soil.

R. S. Oliveira*¹, W. C. Koskinen², J. Constantin¹; ¹Universidade Estadual de Maringá, Maringá, Brazil, ²USDA-ARS - University of Minnesota, St. Paul, MN (114)

Remobilization of Bound Residues of Herbicides in Soils Cultivated with Sugar Cane with Vinasse Application, Straw and Filter Cake.

M. L. Viti*, R. F. Pimpinato, A.

R. Dias, V. L. Tornisielo; Center of Nuclear Energy in Agriculture - CENA/USP, Piracicaba, Brazil (115)

Effect of Different Water Types in the Spraying Tank on the Efficacy of Post Emergence Applied Herbicides.

G. Dvorkin*¹, M. Sibony², B. Chetetz², B. Rubin²;

¹The Faculty of Agriculture, Food and Environment, the Hebrew University of Jerusalem, Rehovot, Israel,

²The Robert H. Smith Faculty of Agriculture, Food and Environment, the Hebrew University of Jerusalem, Rehovot, Israel (116)

Section 13. Integrated Weed Management

***PRESENTER**

Waterhemp Resistance to Post Emergent Application of HPPD Herbicides.

S. Z. Knezevic*¹, J. E. Scott², A. S. Franssen³, V. K. Shivrain⁴;

¹University of Nebraska, Concord, NE, ²University of Nebraska - Lincoln, Concord, NE, ³Syngenta Crop Protection, Seward, NE, ⁴Syngenta Crop Protection, Vero Beach, FL (117)

Giant Ragweed Resistance to Glyphosate in Nebraska.

S. Z. Knezevic*¹, J. E. Scott¹, A. Datta²; ¹University of Nebraska, Concord, NE, ²Asian Institute of Technology, Bangkok, Thailand (118)

Efficacy of Amitrol on Glyphosate-resistant and-susceptible *Conyza bonariensis* Biotypes.

F. Gonzalez-Torralva*¹, R. De Prado¹, A. Salamero²; ¹Universidad de Cordoba, Cordoba, Spain, ²Nufarm España S.A., Cordoba, Spain (119)

What Causes Large On-farm Harvest Losses in Canola?

R. H. Gulden*¹, S. Shirtliffe², T. Haile², L. M. Hall³, C. Willenborg², K. N. Harker⁴;

¹University of Manitoba, Winnipeg, MB, ²University of Saskatchewan, Saskatoon, SK, ³University of Alberta, Edmonton, AB, ⁴Agriculture and Agri-Food Canada, Lacombe, AB (120)

Brown vs. Green: Effects of Animal and Green Manures on Crop Competitiveness and Yield in Dryland Organic Systems.

N. E. Tautges*, I. C. Burke, E. Fuerst, K. Borrelli, D. Pittmann, R. T. Koenig; Washington State University, Pullman, WA (121)

Preemergence Control of Invasive Weed Species in Environmental High Risk Caribbean UNESCO-protected Areas. J. Menendez*¹, D. Camacho¹, R. Alvarez²; ¹Universidad de Huelva, Huelva, Spain, ²Universidad de Sancti Spiritus, Trinidad, Cuba (122)

Management Strategies of Potential Herbicide Resistant Weeds in Cotton in the San Joaquin Valley of California. G. Banuelos*¹, A. Shrestha¹, S. D. Wright², S. I. Rios¹; ¹California State University, Fresno, CA, ²University of California Cooperative Extension, Tulare, CA (123)

Resource Effective Control of *Elymus repens*. B. Ringselle*, L. Andersson, G. Bergkvist, H. Aronsson; Swedish University of Agricultural Sciences, Uppsala, Sweden (124)

Evaluation of Basal Bark Application with a Ready-To-Use Triclopyr Product as a Control Method for *Rhamnus cathartica* in Alberta. D. Laubhann*, M. A. Pelletier, D. F. Slobinyk; City of Edmonton, Edmonton, AB (125)

**TUESDAY MORNING FEBRUARY 4
CWSS-SCM Graduate Student Oral
Presentation Contest**

LOCATION: Plaza B

TIME: 10:00 AM - 12:00 PM

CHAIR: Mahesh Upadhyaya

University of British Columbia

Vancouver, BC

***SPEAKER**

10:00 Early Physiological Mechanisms of Soybean Roots and Nodules in Response to the Presence of Above Ground Weeds. J. L. Gal*, C. J. Swanton, M. Afifi, L. Lukens, E. Lee; University of Guelph, Guelph, ON (126)

10:15 Corn and Soybean Responses to Weeds: A Common Toolbox. A. G. McKenzie-Gopsill*, M. Afifi, S. Amirsadeghi, L. Lukens, E. Lee, C. J. Swanton; University of Guelph, Guelph, ON (127)

10:30 Does Crop-weed Competition Differ Between Conventional and Organic Systems? D. Benaragama*, S. Shirtliffe; University of Saskatchewan, Saskatoon, SK (128)

10:45 Yield Loss Model for Volunteer Canola in Narrow and Wide Row Soybean. P. Gregoire*, R. H. Gulden; University of Manitoba, Winnipeg, MB (129)

11:00 Evaluating the Competitive Ability of Semi-leafless Field Pea (*Pisum sativum*) Cultivars. C. E. Jacob*¹, C. Willenborg¹, S. Shirliffe¹, T. Warkentin¹, M. Dyck²; ¹University of Saskatchewan, Saskatoon, SK, ²University of Alberta, Edmonton, AB (130)

11:15 Demographic and Fitness Consequences of Climate Stress on an Invasive Hybridizing Weed. Z. Teitel*, L. Campbell; Ryerson University, Toronto, ON (131)

11:30 Effect of Heavy Metal Stress on the Successful Establishment of Common Ragweed (*Ambrosia artemisiifolia*) Along Roadside Edges. J. Bae*¹, D. L. Benoit², A. Watson¹; ¹McGill University, Ste. Anne de Bellevue, QC, ²Agriculture and Agri-Food Canada, Saint-Jean-sur-Richelieu, QC (132)

11:45 The Effect of Early Stresses on Ear Development and Mid Season Reproductive Performance in Corn. V. H. Gonzalez*, E. Lee, L. Lukens, C. J. Swanton; University of Guelph, Guelph, ON (133)

**TUESDAY MORNING FEBRUARY 4
NIFA Supported Research on Controlling Weedy
and Invasive Plants**

LOCATION: Plaza A

TIME: 10:00 AM - 12:00 PM

CHAIR: Michael Bowers

National Institute of Food and Agriculture
Washington, DC

***SPEAKER**

10:00 Characterizing the Parasitism Process in the Parasitic Weed *Cuscuta*. N. Sinha*; University of California, Davis, CA (134)

10:15 Dissecting the Drivers of Local Plant Invasions: Disturbance, Environment and Propagule Pressure. L. J. Rew*¹, M. Bridges¹, T. Brummer², E. A. Lehnhoff¹, F.

W. Pollnac¹, B. D. Maxwell¹, T. Skurski¹; ¹Montana State University, Bozeman, MT, ²Lincoln University, Lincoln, New Zealand (135)

10:30 Fueling an Inferno: On the Potential of Plant Invasions to Feedback to Climate Change. N. Tharayil*, M. Tamura; Clemson University, Clemson, SC (136)

10:45 Strawberry Guava Biocontrol in Hawaii. M. Johnson*¹, F. Hughes², G. Asner³, R. Vargas⁴; ¹USDA Forest Service, Volcano, HI, ²USDA Forest Service, Hilo, HI, ³Stanford University, Palo Alto, CA, ⁴USDA-ARS, Hilo, HI (137)

11:00 Toward a Cohesive Understanding of Resistance Evolution: The Impact of Gene Flow on the Evolution of Glyphosate Resistance in *Ipomoea purpurea*. R. S. Baucom*, A. Kuester; University of Michigan, Ann Arbor, MI (138)

11:15 Effects of Soil-conditioning Nurse Plants on the Relative Performance of Native and Exotic Grassland Perennials . N. R. Jordan*¹, S. Vink¹, S. Huerd¹, L. Kinkel¹, C. Sheaffer¹, L. Aldrich-Wolfe²; ¹University of Minnesota, St. Paul, MN, ²Concordia College, Moorhead, MN (139)

11:30 Uncovering the Belowground Drivers of Weed-crop Competition for Improved Weed Management. R. G. Smith*¹, E. A. Hobbie¹, M. Ryan², L. E. Drinkwater²; ¹University of New Hampshire, Durham, NH, ²Cornell University, Ithaca, NY (140)

11:45 Molecular, Physiological, and Ecological Characterization of Multiple Herbicide Resistance in *Avena fatua*. W. E. Dyer*, B. Keith, E. Lehnhoff, F. Menalled, B. Maxwell; Montana State University, Bozeman, MT (141)

TUESDAY MORNING FEBRUARY 4

Section 3. Turf and Ornamental Crops

LOCATION: Georgia B
TIME: 10:00 AM - 11:45 AM
CHAIR: Ramon Leon
University of Florida
Jay, FL

***SPEAKER**

10:00 Preemergence and Postemergence Control of *Arthraxon hispidus*. J. Derr*; Virginia Tech, Virginia Beach, VA (142)

10:15 Bermudagrass Control in Cool-Season Turf with Topramezone. S. S. Rana*, K. A. Venner, M. C. Cox, S. Askew; Virginia Polytechnic Institute and State University, Blacksburg, VA (143)

10:30 Differential Response of Goosegrass and Smooth Crabgrass to Low Rates of Topramezone. M. C. Cox*, S. Askew; Virginia Tech, Blacksburg, VA (144)

10:45 Evaluation of Glyphosate Rates on Fine Fescue Cultivars. K. A. Venner*, S. Askew, M. Goatley, W. Askew; Virginia Tech, Blacksburg, VA (145)

11:00 Pinoxaden and Herbicide Safener Combinations on Creeping Bentgrass (*Agrostis stolonifera*) and Grassy Weeds. M. Elmore*, J. Brosnan, J. J. Vargas, G. K. Breeden; University of Tennessee, Knoxville, TN (146)

11:15 Fate of Arsenic in a Managed Turfgrass System Following MSMA Applications. D. J. Mahoney*, M. Jeffries, M. Polizzotto, T. Gannon; North Carolina State University, Raleigh, NC (147)

11:30 WSSA Lesson Modules for Herbicide Resistance Management in Turfgrass. R. G. Leon*¹, D. Shaw², J. Brosnan³, S. McElroy⁴, S. Askew⁵; ¹University of Florida, Jay, FL, ²Mississippi State University, Starkville, MS, ³University of Tennessee, Knoxville, TN, ⁴Auburn University, Auburn, AL, ⁵Virginia Tech, Blacksburg, VA (148)

TUESDAY MORNING FEBRUARY 4
Section 6. Regulatory Aspects

LOCATION: Plaza C

TIME: 10:00 AM - 11:15 AM

CHAIR: Craig Ramsey

USDA APHIS

Ft. Collins, CO

MODERATOR: Al Tasker

USDA APHIS

Riverdale, MD

***SPEAKER**

10:00 The Evolution (or Revolution?) of Weed Regulations in Canada. C. Lindgren*; Canadian Food Inspection Agency, Winnipeg, MB (149)

10:15 APHIS Regulatory Decision-Making Process: How will it Fit with the Recent EPA Rule on Invasive Biofuel Crops. A. V. Tasker*¹, J. M. Jones²; ¹USDA, APHIS, Plant Protection & Quarantine, Riverdale, MD, ²APHIS PPQ, Frederick, MD (150)

10:30 Value Assessment of Pesticides at the Pest Management Regulatory Agency. M. Downs*; Pest Management Regulatory Agency, Ottawa, ON (151)

10:45 The Value Assessment Toolkit: Guidance for Registrants and Applicants. M. Downs*; Pest Management Regulatory Agency, Ottawa, ON (152)

11:00 Business Meeting

**TUESDAY MORNING FEBRUARY 4
Section 9. Weed Biology and Ecology**

LOCATION: Regency E

TIME: 10:00 AM - 12:00 PM

CHAIR: Greta Gramig

North Dakota State University
Fargo, ND

***SPEAKER**

10:00 Can Overproduction of EPSPS Enhance Fitness in Certain Glyphosate-Resistant Weeds?: Avenues for Research. A. A. Snow*, M. M. Loux, B. A. Ackley, D. Mackey, Z. T. Beres; The Ohio State University, Columbus, OH (153)

10:15 The Influence of Experimental Methods on R:S Ratio in Herbicide Resistance Studies. C. W. Coburn*, A. Kniss; University of Wyoming, Laramie, WY (154)

10:30 Absorption and Translocation of ¹⁴C-glyphosate in a Silvery Threadmoss Colony. A. R. Post*¹, S. Askew²; ¹Oklahoma State University, Stillwater, OK, ²Virginia Tech, Blacksburg, VA (155)

10:45 Evolutionary Dynamics of Glyphosate Resistant and Sensitive Populations in the Southeastern US. A. L. Lawton-Rauh¹, K. E. Beard¹, J. D. Burton*², R. L. Nichols³, K. Lay¹, D. Jordan², A. C. York²; ¹Clemson University, Clemson, SC, ²North Carolina State University, Raleigh, NC, ³Cotton Incorporated, Cary, NC (156)

11:00 Reproductive Fitness of Glyphosate-resistant and Susceptible Giant Ragweed (*Ambrosia trifida*) Biotypes under Varying Climate Change Scenarios. J. Thompson¹, H. Henry¹, R. E. Nurse*²; ¹University of Western Ontario, London, ON, ²Agriculture and Agri-Food Canada, Harrow, ON (157)

11:15 Transcriptome Analysis of Glyphosate Resistance in Giant Ragweed (*Ambrosia trifida*). K. Padmanabhan*, N. B. Best, S. C. Weller, B. Schulz; Purdue University, West Lafayette, IN (158)

11:30 Survey of Glyphosate Resistant Kochia in Western Canada. H. J. Beckie¹, L. M. Hall*², R. H. Low², R. E. Blackshaw³, N. Kimmel⁴, S. Shirriff¹; ¹Agriculture and Agri-Food Canada, Saskatoon, SK, ²University of Alberta, Edmonton, AB, ³Agriculture and Agri-Food Canada, Lethbridge, AB, ⁴Alberta Agriculture and Renewable Resources, Edmonton, AB (159)

11:45 Population Structure of ALS-resistant Weedy Rice. N. R. Burgos*¹, T. Tseng², N. Young³, V. Singh¹, H. Black⁴, D. Gealy⁴, A. Caicedo³; ¹University of Arkansas, Fayetteville, AR, ²Purdue University, West Lafayette, IN, ³University of Massachusetts, Amherst, MA, ⁴USDA-ARS DBNRRRC, Stuttgart, AR (160)

TUESDAY MORNING FEBRUARY 4

Section 11. Physiology

LOCATION: Georgia A

TIME: 10:00 AM - 12:00 PM

CHAIR: Todd Gaines

University of Western Australia

Crawley, WA, Australia

***SPEAKER**

10:00 Detoxification of 2,4-D in Resistant Wild Radish (*Raphanus raphanistrum*). D. Goggin, S. Powles*; University of Western Australia, Crawley, Australia (161)

10:15 Sequence Analysis of Safener-Regulated Transcriptomes from Grain Sorghum Coleoptiles. D. E. Riechers*, A. V. Lygin; University of Illinois, Urbana, IL (162)

10:30 Elevated Constitutive and Inducible Expression of a Cytochrome P450 mRNA in Multiple Herbicide Resistant Wild Oat (*Avena fatua*). W. E. Dyer*, B. Keith, E. Burns, E. Lehnhoff, F. Menalled; Montana State University, Bozeman, MT (163)

10:45 Metabolism-based Herbicide Resistance in *Lolium rigidum*: Using RNA-Seq Transcriptome Analysis to Identify Resistance-endowing Genes. T. A. Gaines*¹, L. Lorentz², A. Figge², J. Herrmann³, F. Maiwald⁴, M. Ott⁴, H. Han⁵, R. Busi⁵, Q. Yu⁵, S. Powles⁵, R. Beffa²; ¹University of Western Australia, Crawley, WA, Australia, ²Bayer CropScience, Frankfurt am Main, Germany, ³University of Braunschweig, Braunschweig, Germany, ⁴Bayer CropScience, Monheim, Germany, ⁵University of Western Australia, Crawley, Australia (164)

11:00 Visualizing Herbicide Resistance from a Metabolomics Perspective. A. Maroli, N. Tharayil*; Clemson University, Clemson, SC (165)

11:15 Mechanism of Propanil Resistance in *Cyperus difformis*. R. M. Pedroso*, A. J. Fischer; University of California, Davis, CA (166)

11:30 Molecular Aspects of EPSPS Gene Amplification in Palmer Amaranth. T. Ulmasov*¹, D. Sammons¹, L. Fan¹, Z. Du¹, D. A. Giacomini², N. Tao¹, R. A. Kerstetter¹, M. Dimmic¹; ¹Monsanto, St. Louis, MO, ²Colorado State University, Fort Collins, CO (167)

11:45 Business Meeting

**TUESDAY AFTERNOON FEBRUARY 4
Graduate Student Luncheon**

LOCATION: Balmoral

TIME: 12:00 PM - 1:00 PM

CHAIR: Alexandra Knight

North Carolina State University
Raleigh, NC

TUESDAY AFTERNOON FEBRUARY 4
Turf Wars and the Emergence of
Pesticide Bans in Canada and the US

LOCATION: Regency D

TIME: 1:00 PM - 5:00 PM

CHAIR: Jenny Kao-Kniffin
Cornell University
Ithaca, NY

***SPEAKER**

1:00 Introduction

1:10 The Social Politics of Law(n)s in Canada: Understanding Municipal Pesticide Policy Change and Residents' Preferred Pesticide Management Approaches.

R. Hirsch*¹, J. Baxter², C. Brown³; ¹Trent University, Peterborough, ON, ²University of Western Ontario, London, ON, ³Health Canada, Ottawa, ON (168)

1:40 An Overview of the Cosmetic Pesticide Ban in Ontario, Adoption of Herbicide Alternatives and Current Weed Control Problems without Solutions. P. M. Charbonneau*; Ontario Ministry of Agriculture and Food, Guelph, ON (169)

2:05 Exploring Alternative Weed Management in Turfgrass Systems in Ontario. K. S. Jordan*, F. J. Tardif, E. M. Lyons; University of Guelph, Guelph, ON (170)

2:30 The Challenges of Turf Weed Management Under the New York Child Safe Playing Field Law. A. F. Senesac*¹, J. T. Kao-Kniffin²; ¹Cornell Cooperative Extension, Riverhead, NY, ²Cornell University, Ithaca, NY (171)

2:50 Organic Weed Control Options in Turfgrass . A. R. Kowalewski*; Oregon State University, Corvallis, OR (172)

3:10 Break

3:25 History and Progress Toward Developing Biological Control Strategies for Turfgrass Systems. J. Neal*; North Carolina State University, Raleigh, NC (173)

3:45 Preventing Weeds with More Competitive Turfgrass Choices. R. N. Brown*; University of Rhode Island, Kingston, RI (174)

4:05 Panel and Presenters Discussion

TUESDAY AFTERNOON FEBRUARY 4 CWSS-SCM Graduate Student Oral Presentation Contest

LOCATION: Plaza B

TIME: 1:00 PM - 4:15 PM

CHAIR: Mahesh Upadhyaya
University of British Columbia
Vancouver, BC

*SPEAKER

1:00 Does Kin Recognition Exist in Annual Weeds? M. E. Lawless*, C. Willenborg, S. Shirtliffe, E. G. Lamb, B. Coulman; University of Saskatchewan, Saskatoon, SK (175)

1:15 Phenological Study and Management of Red Fescue (*Festuca rubra*) in Wild Blueberry. S. K. Sikoriya*; Dalhousie Agricultural Campus, Truro, NS (176)

1:30 The Effect of Carbon Soil Amendments on the Root Growth of Native and Invasive Prairie Species. D. M. Houghton*, Purdue University, West Lafayette, IN (177)

1:45 Integrated Management of Volunteer Canola for Soybean Production. C. M. Geddes*, R. H. Gulden; University of Manitoba, Winnipeg, MB (178)

2:00 Flax Performance in an Organic Rotational No-till System Compared to Two Organic Cropping Systems with Tillage in Southern Manitoba. C. Halde*¹, R. Gulden¹, A. M. Hammermeister², K. H. Ominski¹, M. Tenuta¹, M. Entz¹; ¹University of Manitoba, Winnipeg, MB, ²Dalhousie University, Truro, NS (179)

2:15 Evaluation of Potential Harvest Aids and Application Timing for Lentil Dry Down. T. Zhang*¹, C. Willenborg¹, E. N. Johnson², S. Banniza¹; ¹University of Saskatchewan, Saskatoon, SK, ²Agriculture and Agri-Food Canada, Scott, SK (180)

2:30 Effect of Herbicide Carryover in Cover Crop Capacity to Affect Soil Structure and Nutrient

Availability. M. Rojas*, D. Robinson, L. L. Van Eerd, I. O'Halloran; University of Guelph, Ridgetown, ON (181)

2:45 Effect of Imazethapyr, Mesotrione and Saflufenacil Residues on Four Spring-seeded Cover Crops. L. Yu*, P. H. Sikkema, D. Robinson; University of Guelph, Ridgetown, ON (182)

3:00 Control of Glyphosate Resistant Canada Fleabane (*Conyza canadensis*) with Glyphosate DMA/2,4-D choline (Enlist Duo ©) in Corn (*Zea mays*). L. R. Ford*¹, N. Soltani¹, D. Robinson¹, A. McFadden², R. E. Nurse³, P. H. Sikkema¹; ¹University of Guelph, Ridgetown, ON, ²Dow AgroSciences Canada Inc, Guelph, ON, ³Agriculture and Agri-Food Canada, Harrow, ON (183)

3:15 Break

3:30 The Use of Herbicides in the Prevention and Control of Glyphosate-resistant Kochia on the Canadian Prairies. R. H. Low*, L. Hall; University of Alberta, Edmonton, AB (184)

3:45 Can Tillage and Agronomy be Integrated with Herbicide Application to Control Resistant Weeds? C. N. Redlick*, S. Shirtliffe, C. Willenborg; University of Saskatchewan, Saskatoon, SK (185)

4:00 Control of Cleavers and Wild Oat by Pyroxasulfone and Sulfentrazone in Field Pea is Affected by Edaphic Factors. B. Larnus Tidemann*; University of Alberta, Edmonton, AB (186)

**TUESDAY AFTERNOON FEBRUARY 4
NIFA Supported Research on Controlling Weedy
and Invasive Plants**

LOCATION: Plaza A

TIME: 1:00 PM - 2:45 PM

CHAIR: Michael Bowers

National Institute of Food and Agriculture
Washington, DC

***SPEAKER**

1:00 Activation of Biochemical Defenses by a Seed Decay Pathogen in Dormant Wild Oat Seeds and

Caryopses. E. Fuerst*¹, A. C. Kennedy², P. A. Okubara², J. V. Anderson³, R. S. Gallagher⁴; ¹Washington State Univ., Pullman, WA, ²USDA-ARS, Pullman, WA, ³USDA-ARS, Fargo, ND, ⁴Presbyterian College, Clinton, SC (187)

1:15 Genetic Characterization of *Imperata cylindrica* using a Genotyping by Sequencing Approach: Identifying International Regions for Potential Biological Control Exploration and Development. P. E. Klein*¹, M. Burrell¹, J. A. Goolsby², W. A. Overholt³, A. E. Racelis⁴; ¹Texas A&M University, College Station, TX, ²USDA-ARS, Edinburg, TX, ³University of Florida, Fort Pierce, FL, ⁴The University of Texas-Pan American, Edinburg, TX (188)

1:30 The Role of Hybridization in Biological Control of Weeds. M. Szucs*, R. A. Hufbauer; Colorado State University, Fort Collins, CO (189)

1:45 Scotch Broom Alters Douglas-fir Community Structure and Soil Ecology: Prevention and Mitigation through Alternative Management Practices. T. B. Harrington*¹, R. A. Slesak², A. W. D'Amato²; ¹USDA Forest Service, Olympia, WA, ²University of Minnesota, Minneapolis, MN (190)

2:00 Understanding the Evolution and Spread of Herbicide Resistance in *Amaranthus tuberculatus*. P. J. Tranel*¹, C. S. Wu¹, J. A. Evans², A. S. Davis²; ¹University of Illinois, Urbana, IL, ²USDA-ARS, Urbana, IL (191)

2:15 Defining an Effective Forest Management Strategy that Deters Invasion by Exotic Plants: Invasive Plant Response to Five Forest Management Regimes. C. Huebner*¹, G. Matlack², R. Minocha³, D. McGill⁴, M. Dickinson⁵, G. Miller¹; ¹Northern Research Station, USDA Forest Service, Morgantown, WV, ²Ohio University, Athens, OH, ³Northern Research Station, USDA Forest Service, Durham, NH, ⁴West Virginia University, Morgantown, WV, ⁵Northern Research Station, USDA Forest Service, Delaware, OH (192)

2:30 Efficacy and Economics of Cultural and Mechanical Weed Control Practices for Herbicide-Resistant Weed Management. A. Kniss*¹, P. Jha², R. Wilson³, J. P. Ritten¹; ¹University of Wyoming, Laramie, WY, ²Montana State University, Huntley, MT, ³University of Nebraska, Scottsbluff, NE (193)

TUESDAY AFTERNOON FEBRUARY 4

Section 1. Agronomic Crops

LOCATION: Regency F

TIME: 1:00 PM - 5:00 PM

CHAIR: Prashant Jha

Montana State University

Huntley, MT

*SPEAKER

1:00 Pixxaro (Halauxifen-methyl + Fluroxypyr): a New Auxinic Herbicide for Broadleaf Weed Control in Canadian Cereal Crops. R. Degenhardt^{*1}, D. D. Hare², L. T. Juras³, A. W. MacRae⁴; ¹Dow AgroSciences, Edmonton, AB, ²Dow AgroSciences Canada, Edmonton, AB, ³Dow AgroSciences Canada Inc., Saskatoon, SK, ⁴Dow AgroSciences Canada, Winnipeg, MB (194)

1:15 Paradigm (Halauxifen-methyl + Florasulam) Herbicide for Multi-Mode of Action Broadleaf Weed Control in Western Canadian Cereal Crops. L. T. Juras^{*1}, R. Degenhardt², D. D. Hare³, A. W. MacRae⁴; ¹Dow AgroSciences Canada Inc., Saskatoon, SK, ²Dow AgroSciences, Edmonton, AB, ³Dow AgroSciences Canada, Edmonton, AB, ⁴Dow AgroSciences Canada, Winnipeg, MB (195)

1:30 Pyroxasulfone for Managing *Bromus*, *Avena*, and *Galium* spp. in Winter Wheat. E. N. Johnson^{*1}, K. N. Harker², B. L. Beres³, R. M. Mohr⁴, W. M. Hamman⁵, K. Coles⁶, M. Gretzinger⁶; ¹Agriculture and Agri-Food Canada, Scott, SK, ²Agriculture and Agri-Food Canada, Lacombe, AB, ³Agriculture and Agri-Food Canada, Lethbridge, AB, ⁴Agriculture and Agri-Food Canada, Brandon, MB, ⁵Hamman Ag Research, Lethbridge, AB, ⁶Farming Smarter, Lethbridge, AB (196)

1:45 Assessing Efficacy of Herbicide Mixtures and Adjuvants with Logarithmic Sprayers. J. Duus, J. C. Streibig^{*}; University of Copenhagen, Taastrup, Denmark (197)

2:00 Provisia™: A New Vision in Red Rice Control. J. Harden¹, B. Luzzi², D. Carlson^{*2}, D. More¹, H. Hong², J. Stevenson-Paulik², L. Mankin¹; ¹BASF Corporation, Research Triangle Park, NC, ²BASF Plant Science, Research Triangle Park, NC (198)

2:15 Bicyclopyrone, a New Herbicide for Improved Weed Control in Corn. R. D. Lins*¹, T. H. Beckett², S. E. Cully³, J. P. Foresman², G. D. Vail²; ¹Syngenta Crop Protection, Byron, MN, ²Syngenta Crop Protection, Greensboro, NC, ³Syngenta Crop Protection, Marion, IL (199)

2:30 Stewardship of DuPont™ Inzen™ Herbicide Tolerance Trait for Sorghum. D. Saunders*, W. J. Schumacher; DuPont Crop Protection, Johnston, IA (200)

2:45 Enhanced Weed Management Solutions with MGI Herbicide-Tolerant Soybeans. R. Jain*¹, D. E. Bruns², J. C. Holloway², T. H. Beckett², B. L. Wilkinson², B. Erdahl²; ¹Syngenta Crop Protection, Vero Beach, FL, ²Syngenta Crop Protection, Greensboro, NC (201)

3:00 Two Pass Weed Control Programs in Soybean. P. H. Sikkema*, N. Soltani; University of Guelph, Ridgetown, ON (202)

3:15 Break

3:30 Glufosinate Rate and Application Timing for Control of Johnsongrass (*Sorghum halepense*) in Glufosinate-resistant Soybean (*Glycine max*). R. L. Landry*, D. O. Stephenson, IV, B. C. Woolam; Louisiana State University AgCenter, Alexandria, LA (203)

3:45 Weed Control and Crop Response with Sequential Application of Encapsulated Acetochlor in Soybean. A. J. Jhala*¹, M. S. Malik²; ¹University of Nebraska, Lincoln, NE, ²Monsanto, Lincoln, NE (204)

4:00 Metribuzin Weed Control in the Roundup Ready Soybean System. A. Perez-Jones*¹, J. J. Gilsinger², B. J. La Vallee¹, P. C. Feng¹; ¹Monsanto, Saint Louis, MO, ²Monsanto, Mount Olive, NC (205)

4:15 Effect of Pyroxasulfone Application Rate and Timing on Soybean (*Glycine max*) Growth and Yield. D. O. Stephenson, IV*¹, J. L. Griffin², B. C. Woolam¹, R. L. Landry¹, M. Hardwick²; ¹Louisiana State University AgCenter, Alexandria, LA, ²LSU AgCenter, Baton Rouge, LA (206)

4:30 Efficacy and Persistence of Imazethapyr Applied Alone and as Tank Mix in Clusterbean. S. Singh*, S. S.

Punia; CCS Haryana Agricultural University, Hisar, India (207)

4:45 Cotton Tolerance and Weed Control by Acetochlor/S-Metolachlor and Pyrithiobac Tank Mixes. C. W. Cahoon*, A. C. York, D. Jordan, W. J. Everman; North Carolina State University, Raleigh, NC (208)

TUESDAY AFTERNOON FEBRUARY 4
Section 4. Pasture, Rangeland, Forest,
and Rights of Way

LOCATION: Plaza C

TIME: 1:00 PM - 3:30 PM

CHAIR: Andrew Ezell

Mississippi State University
Starkville, MS

***SPEAKER**

1:00 Controlling Natural Pines with Mixtures of Aminocyclopyrachlor and Fosamine. A. W. Ezell*¹, J. L. Yeiser²; ¹Mississippi State University, Mississippi State, MS, ²University of Arkansas, Monticello, AR (209)

1:15 ClearView Brush Herbicide (Aminopyralid +Metsulfuron-methyl+Triclopyr BEE) for Foliar Application Control of Black Spruce (*Picea mariana*) (PIEMA) on Rights-of-Way, Industrial Areas, and Non-Crop Areas. D. D. Hare*¹, R. Degenhardt², L. T. Juras³, A. W. MacRae⁴; ¹Dow AgroSciences Canada, Edmonton, AB, ²Dow AgroSciences, Edmonton, AB, ³Dow AgroSciences Canada Inc., Saskatoon, SK, ⁴Dow AgroSciences Canada, Winnipeg, MB (210)

1:30 MAT28 Blends with Krenite for Brownout of Oak and Elm in SE Oklahoma. J. L. Yeiser*¹, A. W. Ezell², J. Grogan³; ¹University of Arkansas, Monticello, AR, ²Mississippi State University, Mississippi State, MS, ³Stephen F Austin State University, Nacogdoches, TX (211)

1:45 Control of Hardwoods Two Years After Directed Spray Application of Treatments containing MAT-28, Metsulfuron, and Imazapyr. A. W. Ezell*¹, J. L. Yeiser²; ¹Mississippi State University, Mississippi State, MS, ²University of Arkansas, Monticello, AR (212)

2:00 Control of Oak and Yaupon with Individual Plant Treatments of MAT28 Mixtures. J. L. Yeiser*¹, A. W. Ezell², J. Grogan³; ¹University of Arkansas, Monticello, AR, ²Mississippi State University, Mississippi State, MS, ³Stephen F Austin State University, Nacogdoches, TX (213)

2:15 Chinese Tallowtree Ecology and Control in Pastures. S. F. Enloe*; Auburn University, Auburn, AL (214)

2:30 Controlling Trumpet Creeper, Greenbriar, and Honeysuckle on Fences with MAT28 in Texas. J. L. Yeiser*¹, A. W. Ezell², J. Grogan³; ¹University of Arkansas, Monticello, AR, ²Mississippi State University, Mississippi State, MS, ³Stephen F Austin State University, Nacogdoches, TX (215)

2:45 Behavior of 2,4-D in Sensitive and Tolerant Red Clover (*Trifolium pratense*) Lines. T. L. Burke*, J. Roberts, N. Taylor, M. Barrett; University of Kentucky, Lexington, KY (216)

3:00 Smutgrass Management: From Biology to Control. N. Rana*¹, B. A. Sellers², J. A. Ferrell³; ¹Monsanto, Chesterfield, MO, ²University of Florida, Ona, FL, ³University of Florida, Gainesville, FL (217)

3:15 Business Meeting

TUESDAY AFTERNOON FEBRUARY 4

Section 9. Weed Biology and Ecology

LOCATION: Regency E

TIME: 1:00 PM - 5:00 PM

CHAIR: Greta Gramig

North Dakota State University

Fargo, ND

***SPEAKER**

1:00 What's a Weed Worth?: Integrating Full Costs and Benefits into Control Decision-making for Common Milkweed (*Asclepias syriaca*). A. DiTommaso*, J. E. Losey; Cornell University, Ithaca, NY (218)

1:15 InvDER: A Landscape Scale Spatial Model to Estimate Invasion Risk. J. N. Barney*, E. S. Dollete, D. R. Tekiela, M. Ho; Virginia Tech, Blacksburg, VA (219)

1:30 PAM: A Decision Support Tool for Guiding Integrated Management of Palmer Amaranth. M. V. Bagavathiannan*¹, J. K. Norsworthy¹, M. Lacoste², S. Powles³; ¹University of Arkansas, Fayetteville, AR, ²University of Western Australia, Perth, Australia, ³University of Western Australia, Crawley, Australia (220)

1:45 Selecting Optimum Predictive Models for Weed Emergence Using AIC Associated with Penalty Costs. R. Werle*, L. Sandell, J. L. Lindquist; University of Nebraska, Lincoln, NE (221)

2:00 The Effects of Sheep Grazing for Cover Crop Termination on Plant Community Structure, Weed Pressure and Crop Yields: Evaluating an Ecological-based Management Strategy for Agroecosystems. S. C. McKenzie*, H. B. Goosey, K. M. O'Neill, F. Menalled; Montana State University, Bozeman, MT (222)

2:15 Long-term Effects of Strip Tillage and Cover Crops on Weed Seedbank Dynamics and Profitability in Vegetables. D. C. Brainard*, E. Haramoto, D. C. Noyes; Michigan State University, East Lansing, MI (223)

2:30 Estimating Impacts of Grassy Weed Species on Risk of Cereal Viruses. Z. Miller*, F. Menalled, M. Burrows, N. Ranabhat, D. Delaney-Falcon; Montana State University, Bozeman, MT (224)

2:45 Can Fungal Pathogens, Nitrogen, and Moisture Explain Suppression of Weed Emergence in Strip tilled Cabbage with Cover Crops? E. Haramoto*, D. C. Brainard; Michigan State University, East Lansing, MI (225)

3:00 Crop Canopy Effects on Kochia Seed Characteristics in Kansas. A. Esser*, A. Dille; Kansas State University, Manhattan, KS (226)

3:15 Break

3:30 Maternal Environment Influences Propagule Pressure of an Agricultural Weed, *Raphanus raphanistrum* (Brassicaceae). R. J. Parker¹, G. Blakelock², L. G. Campbell*¹; ¹Ryerson University, Toronto, ON, ²Trent University, Peterborough, ON (227)

3:45 Germination and Growth of Three Weed Species in Response to the Addition of Vinasse and Biochar to the Soil. N. Soni¹, R. G. Leon*¹, J. E. Erickson², J. A. Ferrell², M. L. Silveira³; ¹University of Florida, Jay, FL, ²University of Florida, Gainesville, FL, ³University of Florida, Ona, FL (228)

4:00 Kochia Seedbank Dynamics in Central Great Plains of US. A. Dille*¹, P. Stahlman², P. Geier², R. Currie³, R. Wilson⁴, G. Sbatella⁵, A. Kniss⁶, P. Westra⁷; ¹Kansas State University, Manhattan, KS, ²Kansas State University, Hays, KS, ³Kansas State University, Garden City, KS, ⁴University of Nebraska, Scottsbluff, NE, ⁵Oregon State University, Madras, OR, ⁶University of Wyoming, Laramie, WY, ⁷Colorado State University, Fort Collins, CO (229)

4:15 A Stable Isotope Method for Measuring Weed Seedbank Longevity *in situ*. A. Kniss*¹, D. Odero², D. A. Claypool¹; ¹University of Wyoming, Laramie, WY, ²University of Florida, Belle Glade, FL (230)

4:30 Germination Ecology of Catchfly (*Silene conoidea*) Seeds of Different Colors. M. M. Javaid*¹, A. Tanveer²; ¹University of Sargodha, Sargodha, Pakistan, ²University of Agriculture, Faisalabad, Pakistan (231)

4:45 Business Meeting

TUESDAY AFTERNOON FEBRUARY 4 Section 13. Integrated Weed Management

LOCATION: Georgia B

TIME: 1:00 PM - 5:00 PM

CHAIR: Chris Benedict

Washington State University

Bellingham, WA

***SPEAKER**

1:00 State of Integrated Weed Management and Pesticide Use in the Canadian Prairies. J. Y. Leeson, H. J. Beckie*; Agriculture and Agri-Food Canada, Saskatoon, SK (232)

1:15 Integrated Weed Management in Dry-seeded Rice Systems in Asia. B. S. Chauhan*; IRRI, Los Banos, Philippines (233)

1:30 Is There a Future for Predicting the Competitive Ability of Cultivars? A Case Study of Wheat in the UK. I. K. Andrew*; Rothamsted Research, Harpenden, England (234)

1:45 The Significance of Harvest Weed Seed Control in Herbicide Resistance Management. M. J. Walsh*¹, S. Powles²; ¹University of Western Australia, Perth, Australia, ²University of Western Australia, Crawley, Australia (235)

2:00 Double Knock: Sequential Applications for Seed Set Control of Hard-to-Control and Glyphosate Resistant Weeds of Sub-tropical Australia. M. J. Widderick*¹, S. R. Walker²; ¹Department of Agriculture, Fisheries and Forestry Queensland (DAFFQ), Toowoomba, Australia, ²The University of Queensland, Toowoomba, Australia (236)

2:15 Delaying Herbicide Resistance with Integrated Wild Oat (*Avena fatua*) Management. K. N. Harker*¹, J. T. O'Donovan¹, T. K. Turkington¹, V. Baron¹, R. E. Blackshaw², L. Hall³, E. N. Johnson⁴, C. Willenborg⁵, S. Shirtcliffe⁵, R. Gulden⁶, J. Kobler⁷, D. Pageau⁸; ¹Agriculture and Agri-Food Canada, Lacombe, AB, ²Agriculture and Agri-Food Canada, Lethbridge, AB, ³University of Alberta, Edmonton, AB, ⁴Agriculture and Agri-Food Canada, Scott, SK, ⁵University of Saskatchewan, Saskatoon, SK, ⁶University of Manitoba, Winnipeg, MB, ⁷University of Guelph, New Liskeard, ON, ⁸Agriculture and Agri-Food Canada, Normandin, QC (237)

2:30 Recurrent Applications of 2,4-D Amine Lead to the Rapid Evolution of 2,4-D and ALS Cross Resistance in a Susceptible Wild Radish (*Raphanus raphanistrum*) Population. M. B. Ashworth*¹, M. J. Walsh¹, K. C. Flower², S. Powles²; ¹University of Western Australia, Perth, Australia, ²University of Western Australia, Crawley, Australia (238)

2:45 Pyroxasulfone Efficacy Against *Phalaris minor* in Wheat in India. S. Singh*; CCS Haryana Agricultural University, Hisar, India (239)

3:00 Oxyfluorfen for Fallow Bed Weed Control in Row Crops in the Mid-South USA – 2010 to 2013. L. C. Walton*¹, A. T. Ellis², B. B. Haygood³, R. B. Lassiter⁴, V. B. Langston⁵, R. K. Mann⁶; ¹Dow AgroSciences, Tupelo, MS, ²Dow AgroSciences, Arlington, TN, ³Dow AgroSciences,

Collerville, TN, ⁴Dow AgroSciences, Cary, NC, ⁵Dow AgroSciences, The Woodlands, TX, ⁶Dow AgroSciences, Indianapolis, IN (240)

3:15 Break

3:30 Weed Control in Tomato (*Lycopersicon esculentum*) Through Mulching and Herbicides. T. Bakht*; The University of Agriculture, Peshawar, Pakistan (241)

3:45 Recurrent Bi-directional Selection on Flowering Date Highlights the Genetic Diversity of Wild Radish (*Raphanus raphanistrum*) Populations. M. B. Ashworth¹, M. J. Walsh¹, K. C. Flower², S. Powles*²; ¹University of Western Australia, Perth, Australia, ²University of Western Australia, Crawley, Australia (242)

4:00 Integrated Palmer Amaranth Management in Glufosinate-Resistant Cotton. A. J. Price*¹, J. Aulakh², S. Enloe²; ¹USDA-ARS, Auburn, AL, ²Auburn University, Auburn, AL (243)

4:15 Controlling Downy Brome (*Bromus tectorum*) on Rangeland with Prescribed Burning and Herbicides. K. C. Kessler*, S. J. Nissen, G. K. Beck, J. Sebastian; Colorado State University, Ft. Collins, CO (244)

4:30 Combining Cultural Practices with Herbicides Reduces Wild Oat Seed in the Soil Seed Bank and Improves Barley Yield. J. T. O'Donovan*¹, K. N. Harker¹, T. K. Turkington¹, G. W. Clayton²; ¹Agriculture and Agri-Food Canada, Lacombe, AB, ²Agriculture and Agri-Food Canada, Lethbridge, AB (245)

4:45 Business Meeting

TUESDAY AFTERNOON FEBRUARY 4 WSSA Business Meeting

LOCATION: Georgia A

TIME: 5:00 PM - 6:00 PM

CHAIR: James Kells

Michigan State University

East Lansing, MI

WEDNESDAY MORNING FEBRUARY 5
Graduate Student Professional
Development Workshop

LOCATION: Regency D

TIME: 10:00 AM - 12:00 PM

CHAIR: Alexandra Knight

North Carolina State University
Raleigh, NC

WEDNESDAY MORNING FEBRUARY 5
PMRA, CFIA Regulatory Issues and
Provincial Weed Reports

LOCATION: Regency E

TIME: 10:00 AM - 12:00 PM

CHAIR: Mike Cowbrough

Ontario Ministry of Agriculture and Food
Guelph, ON

WEDNESDAY MORNING FEBRUARY 5
Section 1. Agronomic Crops

LOCATION: Regency F

TIME: 10:00 AM - 12:00 PM

CHAIR: Prashant Jha

Montana State University
Huntley, MT

***SPEAKER**

10:00 Energy Beet: An Undiscovered Crop for the Southeast US. T. M. Webster*¹, T. L. Grey², B. Scully¹, T. B. Brenneman², R. F. Davis¹, B. Dutta², W. C. Johnson III¹; ¹USDA-ARS, Tifton, GA, ²University of Georgia, Tifton, GA (246)

10:15 Wheat: Roundup Ready or Not. C. Mallory-Smith*¹, D. Horneck²; ¹Oregon State University, Corvallis, OR, ²Oregon State University, Hermiston, OR (247)

10:30 TruFlex Roundup Ready Canola. T. Herzog*; Monsanto Canada Inc., Yorkton, SK (248)

10:45 Characteristics of Herbicide-Resistant Weeds. I. M. Heap*; WeedSmart, Corvallis, OR (249)

11:00 Harvest Weed Seed Control: Testing Australian Seedbank Management Tactics in USA Soybean. J. K. Norsworthy*¹, M. J. Walsh², M. V. Bagavathiannan¹, K. W. Bradley³, L. Steckel⁴, G. Kruger⁵, M. M. Loux⁶, T. Eubank⁷, V. Davis⁸, W. Johnson⁹, B. Young¹⁰, S. Powles¹¹; ¹University of Arkansas, Fayetteville, AR, ²University of Western Australia, Perth, Australia, ³University of Missouri, Columbia, MO, ⁴University of Tennessee, Jackson, TN, ⁵University of Nebraska, North Platte, NE, ⁶The Ohio State University, Columbus, OH, ⁷Mississippi State University, Stoneville, MS, ⁸University of Wisconsin, Madison, WI, ⁹Purdue University, West Lafayette, IN, ¹⁰University of Southern Illinois, Carbondale, IL, ¹¹University of Western Australia, Crawley, Australia (250)

11:15 Update on Herbicide Resistance in Kochia in the Central Great Plains. P. W. Stahlman*¹, A. S. Godar²; ¹Kansas State University, Hays, KS, ²Kansas State University, Manhattan, KS (251)

11:30 Evolution of ACC-Inhibitor Resistance in Wild Oat (*Avena fatua*) in a Long-term Alternative Cropping Systems Study. H. J. Beckie*¹, E. N. Johnson²; ¹Agriculture and Agri-Food Canada, Saskatoon, SK, ²Agriculture and Agri-Food Canada, Scott, SK (252)

11:45 Business Meeting

WEDNESDAY MORNING FEBRUARY 5

Section 3. Turf and Ornamental Crops

LOCATION: Georgia B

TIME: 10:00 AM - 11:30 AM

CHAIR: Ramon Leon

University of Florida

Jay, FL

***SPEAKER**

10:00 Flurprimidol Uptake and Metabolism of Six Grass Species. A. P. Williams*, M. Barrett, D. W. Williams; University of Kentucky, Lexington, KY (253)

10:15 Response of 110 Kentucky Bluegrass Varieties to Methiozolin. S. S. Rana*, S. Askew, K. A. Venner, A. N. Smith; Virginia Tech, Blacksburg, VA (254)

10:30 Investigating the Role of Tyrosine Aminotransferase Inhibition on *Poa annua* Response to Methiozolin. K. A. Venner*¹, E. Collakova¹, S. Koo², S. Askew¹; ¹Virginia Tech, Blacksburg, VA, ²Moghu Research Center, Daejeon, South Korea (255)

10:45 Remediation of Indaziflam-treated Turf Areas Prior to Overseeding Perennial Ryegrass. T. Gannon*¹, J. Brosnan², M. Jeffries¹; ¹North Carolina State University, Raleigh, NC, ²University of Tennessee, Knoxville, TN (256)

11:00 Sod Harvesting Intervals of Four Warm-Season Grasses for Halosulfuron and Sulfentrazone. C. Johnston*, P. McCullough; University of Georgia, Griffin, GA (257)

11:15 Business Meeting

WEDNESDAY MORNING FEBRUARY 5
Section 8. Formulation, Adjuvant and
Application Technology

LOCATION: Plaza A

TIME: 10:00 AM - 12:00 PM

CHAIR: Gregory Dahl

Winfield Solutions LLC

St. Paul, MN

***SPEAKER**

10:00 Testing of a Novel 2,4-D Formulation with Glyphosate and Adjuvants for Drift Reduction Technology. G. K. Dahl*¹, L. C. Magidow², J. V. Gednalske², L. J. Hennemann², A. C. Clark², W. Stepanie¹; ¹Winfield Solutions LLC, St. Paul, MN, ²Winfield Solutions, River Falls, WI (258)

10:15 Use of Computer Vision in Precision Farming. A. Rana*, J. Derr; Virginia Tech, Virginia Beach, VA (259)

10:30 Variability in Categorization of Spray Nozzles Classified According to Droplet Distribution. S. Wedryk*¹, L. C. Magidow², G. K. Dahl³, E. Spandl³, J. V. Gednalske²; ¹Winfield Solutions LLC, Shoreview, MN, ²Winfield Solutions, River Falls, WI, ³Winfield Solutions LLC, St. Paul, MN (260)

10:45 Dicamba Formulation Advancements. J. Sandbrink, J. Travers, A. Macinnes*, J. Hemminghaus; Monsanto, St. Louis, MO (261)

11:00 Dicamba Drift as Affected by Best Management Practices with Engenia. D. B. Reynolds*¹, J. Cobb¹, J. B. Guice¹, W. E. Thomas²; ¹Mississippi State University, Mississippi State, MS, ²BASF Corporation, Research Triangle Park, NC (262)

11:15 Vesicle Forming Surfactants as Novel Spray Drift Control Agents in Herbicide Applications. S. Sun*, L. Dempsey, Q. He; AkzoNobel Surface Chemistry, Brewster, NY (263)

11:30 Modified Cellulose Ethers as Drift Reduction Technology. L. Dempsey*, S. Sun, Q. He; AkzoNobel Surface Chemistry, Brewster, NY (264)

11:45 Business Meeting

WEDNESDAY MORNING FEBRUARY 5
Section 10. Biocontrol of Weeds

LOCATION: Plaza B

TIME: 10:00 AM - 11:15 AM

CHAIR: Bill Bruckhart

USDA ARS

Ft. Detrick, MD

MODERATOR: Joe Neal

North Carolina State Univ.

Raleigh, NC

***SPEAKER**

10:00 Efficacy of Downy Brome (*Bromus tectorum*) Biocontrol on Target and Non-target Species. K. A. Ehlert*, Z. Miller, J. M. Mangold, F. Menalled; Montana State University, Bozeman, MT (265)

10:15 The Potential for Biological Control of Silvery Threadmoss with Two Fungal Pathogens. S. Askew¹, A. R. Post*², D. S. McCall¹; ¹Virginia Tech, Blacksburg, VA, ²Oklahoma State University, Stillwater, OK (266)

10:30 Effect of Burial Depth on Seed Feeding Potential of Granivorous Carabid Beetles. S. S. Kulkarni*¹, C.

Willenborg², L. M. Dossall¹; ¹University of Alberta, Edmonton, AB, ²University of Saskatchewan, Saskatoon, SK (267)

10:45 Grit Application Controls Weeds in Organic Crop Production. M. Erazo-Barradas*¹, S. A. Clay¹, F. Forcella²; ¹South Dakota State University, Brookings, SD, ²USDA, Morris, MN (268)

11:00 Business Meeting

WEDNESDAY MORNING FEBRUARY 5 Section 12. Soil and Environmental Aspects

LOCATION: Plaza C

TIME: 10:00 AM - 11:00 AM

CHAIR: Kyle Keller

BASF

Research Triangle Park, NC

***SPEAKER**

10:00 Evaluation of Cotton Tolerance and Yield Response to Various Rates of PRE Applied Fomesafen at Three Locations in Georgia. X. Li*¹, T. L. Grey², B. H. Blanchett², W. K. Vencill¹; ¹University of Georgia, Athens, GA, ²University of Georgia, Tifton, GA (269)

10:15 Effect of Long Term Irrigation with Treated Wastewater on the Efficacy and Fate of Trifloxysulfuron-sodium in Soil. G. Dvorkin*¹, M. Sibony², B. Chetetz², B. Rubin²; ¹The Faculty of Agriculture, Food and Environment, the Hebrew University of Jerusalem, Rehovot, Israel, ²The Robert H. Smith Faculty of Agriculture, Food and Environment, the Hebrew University of Jerusalem, Rehovot, Israel (270)

10:30 Denitrification and Denitrifier Community Structure in Response to Previous Crop and Weed Management Intensity. R. H. Gulden*¹, M. Tenuta¹, S. Mitchell², T. J. Daniell²; ¹University of Manitoba, Winnipeg, MB, ²James Hutton Institute, Dundee, Scotland (271)

10:45 Business Meeting

**WEDNESDAY AFTERNOON FEBRUARY 5
CWSS-SCM Awards Luncheon**

LOCATION: Grouse

TIME: 12:00 PM - 1:30 PM

CHAIR: David Clements

Trinity Western University

Langley, BC

**WEDNESDAY AFTERNOON FEBRUARY 5
Vulnerability of the Pacific Northwest to
Plant Invasions**

LOCATION: Regency D

TIME: 1:45 PM - 5:00 PM

CHAIR: David Clements

Trinity Western University

Langley, BC

***SPEAKER**

1:45 Introduction

1:55 Complexity - Addressing This Invasive Plant Management Challenge in British Columbia. V. Miller*; BC Ministry of Forests, Lands and Natural Resource Operations, Nelson, BC (272)

2:15 Plant Invasions in Mountain Ecosystems of the Rockies. L. J. Rew*¹, B. J. Naylor², F. W. Pollnac¹, T. Seipel¹, K. Anderson³, C. G. Parks²; ¹Montana State University, Bozeman, MT, ²USDA Forest Service, La Grande, OR, ³San Diego Zoo, San Diego, CA (273)

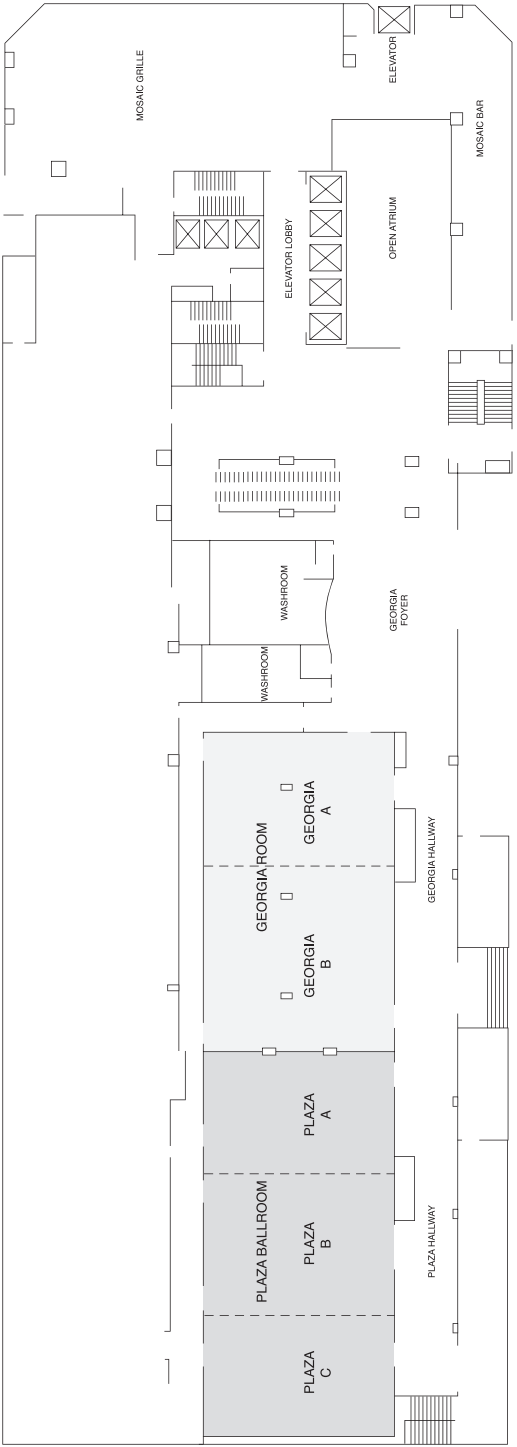
2:35 All the Pretty Plants: Horticultural Introductions and Propagule Pressure in the Pacific Northwest. S. Reichard*; University of Washington, Seattle, WA (274)

2:55 Invasive Japanese Knotweed in the Pacific Northwest: Are they all Clones? S. L. Gillies*, A. Janmaat, A. Reid, A. Sum; University of the Fraser Valley, Abbotsford, BC (275)

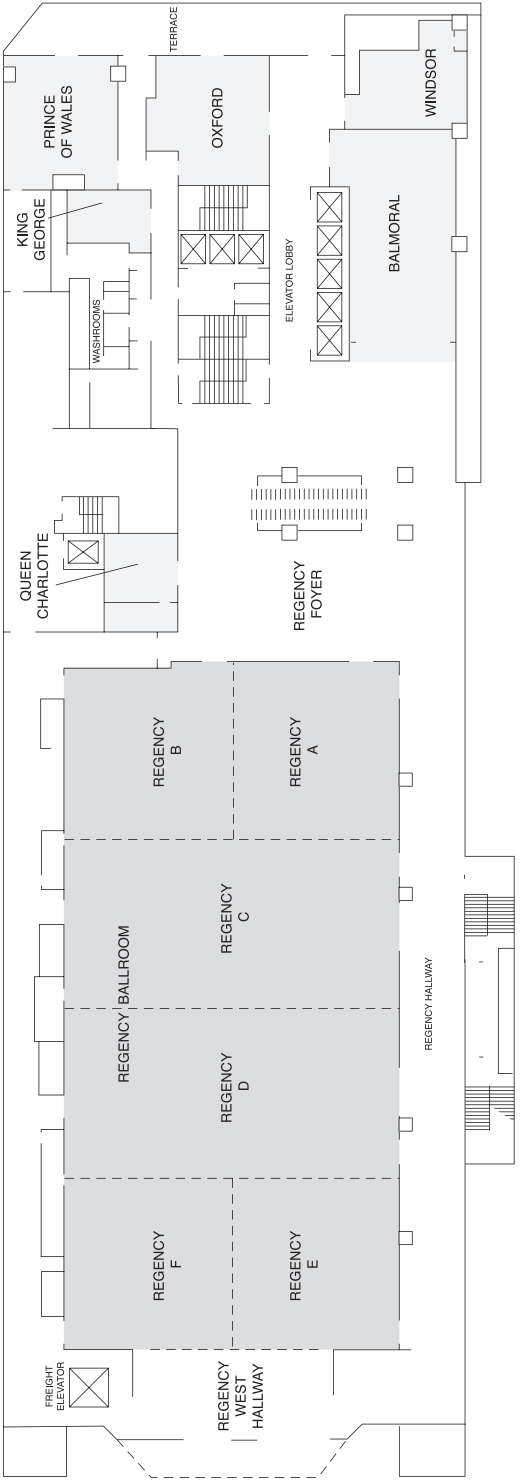
3:15 Break

3:30 Regional Differences in Japanese Knotweed Management Strategies across Canada. T. G. Larsen*; East Kootenay Invasive Plant Council, Kimberley, BC (276)

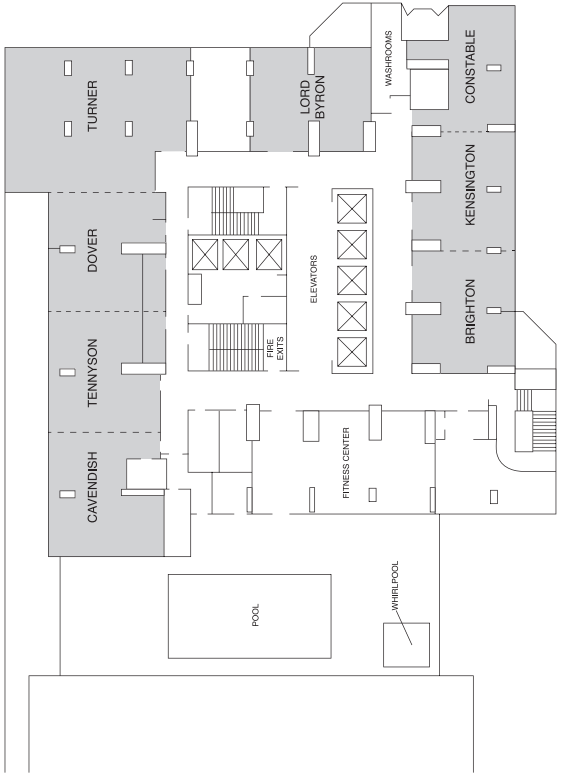
PLAZA LEVEL (SECOND FLOOR)



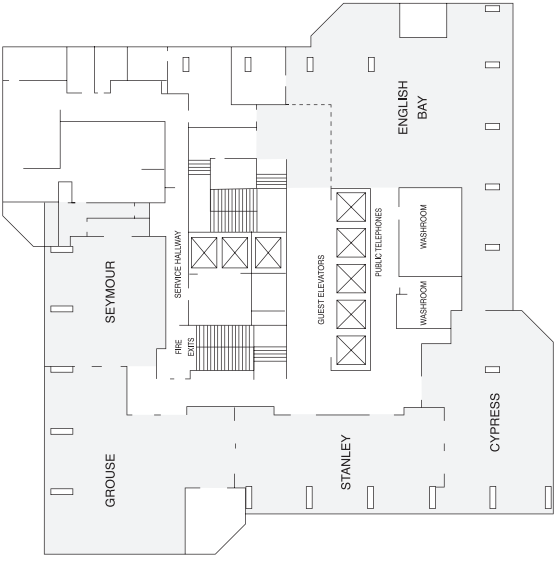
CONVENTION LEVEL (THIRD FLOOR)



FOURTH FLOOR



PERSPECTIVES LEVEL (34th FLOOR)



3:50 Integrated Control Strategies of Wild Chervil and other Perennial Weeds in the Pacific Northwest. T. W. Miller*; Washington State University, Mount Vernon, WA (277)

4:10 Aquatic Plant Invasions and Their Management in the Pacific Northwest. M. D. Sytsma*; Portland State University, Portland, OR (278)

4:30 Repulsing Plant Invasions in the Pacific Northwest – Successes, Failures and Everything Between. A. Janmaat*¹, J. H. Myers², L. Scott³; ¹University of the Fraser Valley, Abbotsford, BC, ²University of British Columbia, Vancouver, BC, ³Invasive Plant Program Coordinator for the Okanagan-Similkameen Regional District, Summerland, BC (279)

WEDNESDAY AFTERNOON FEBRUARY 5
Bioherbicides: Current Status and the
Future Prospects

LOCATION: Plaza B

TIME: 1:00 PM - 5:00 PM

CO-CHAIR: Franck Dayan
USDA-ARS
University, MS

CO-CHAIR: Steve Duke
USDA-ARS
University, MS

***SPEAKER**

1:00 Overview of Biopesticides. S. O. Duke*; USDA-ARS, Oxford, MS (280)

1:15 Regulatory Update of the IR-4 Project Biopesticide and Organic Support Program. M. P. Braverman*, J. Baron, D. Kunkel, M. Arsenovic; IR-4, Rutgers University, Princeton, NJ (281)

1:45 Insights on Overcoming the Bioherbicide Lag. L. G. Boddy*, P. G. Marrone; Marrone Bio Innovations, Davis, CA (282)

2:15 Plant Essential Oils as Botanical Herbicides. M. B. Isman*; University of British Columbia, Vancouver, BC (283)

2:45 BioDirect(tm) and Managing Herbicide Resistant Amaranths. D. Sammons*¹, D. Wang¹, S. Reiser¹, S. Navarro¹, N. Rana², G. Griffith¹; ¹Monsanto, St. Louis, MO, ²Monsanto, Chesterfield, MO (284)

3:15 Break

3:30 Why the Limited Success with Mycoherbicides? A. Watson*; McGill University, Ste-Anne-de-Bellevue, QC (285)

4:00 Manuka Oil: Natural HPPD Inhibitors. F. E. Dayan*, D. K. Owens; USDA-ARS, University, MS (286)

4:30 The Development of the Fungus-derived Herbicide, Mevalocidin. C. Pearce*; Mycosynthetix, Inc., Hillsborough, NC (287)

WEDNESDAY AFTERNOON FEBRUARY 5

Section 1. Agronomic Crops

LOCATION: Regency F

TIME: 1:00 PM - 5:00 PM

CHAIR: Prashant Jha

Montana State University

Huntley, MT

***SPEAKER**

1:00 HPPD Inhibitor Resistance Stewardship. The Perspective of the HRAC Working Group. G. D. Vail*¹, W. E. Thomas², P. Porpiglia³, W. J. Patzoldt⁴, R. Beffa⁵; ¹Syngenta Crop Protection, Greensboro, NC, ²BASF Corporation, Research Triangle Park, NC, ³AMVAC Chemical Corporation, Newport Beach, CA, ⁴DuPont Corp, Wilmington, DE, ⁵Bayer CropScience, Frankfurt am Main, Germany (288)

1:15 Absorption, Translocation, and Metabolism of Glyphosate in Nicosulfuron and Glyphosate-resistant *Sorghum halepense*. A. N. Smith*, S. Askew, S. Hagood; Virginia Tech, Blacksburg, VA (289)

1:30 Distribution of Multiple Herbicide Resistance in Missouri Waterhemp Populations. J. Schultz*, E. B. Riley, J. D. Wait, K. W. Bradley; University of Missouri, Columbia, MO (290)

1:45 Soil-Residual Protoporphyrinogen Oxidase (PPO)-Inhibiting Herbicides and the Selection for PPO-Resistant Waterhemp (*Amaranthus tuberculatus*). R. Wuerffel*, B. Young, J. Young, J. Matthews; Southern Illinois University, Carbondale, IL (291)

2:00 Management of Glyphosate Resistant Common Waterhemp in Texas Cotton Cultures. J. A. McGinty*¹, P. A. Baumann², G. D. Morgan¹, M. E. Matocha¹, L. M. Etheredge³; ¹Texas A&M AgriLife Extension, College Station, TX, ²Texas A&M University, College Station, TX, ³Monsanto, Llano, TX (292)

2:15 Triazine and HPPD Inhibitors-resistant Palmer Amaranth in Nebraska. A. J. Jhala*¹, L. Sandell¹, N. Rana², G. Kruger³, S. Z. Knezevic⁴; ¹University of Nebraska, Lincoln, NE, ²Monsanto, Chesterfield, MO, ³University of Nebraska, North Platte, NE, ⁴University of Nebraska, Concord, NE (293)

2:30 Assessment of HPPD-inhibitors Applied Alone or in Combination with Atrazine for Control of Glyphosate-Resistant Palmer Amaranth (*Amaranthus palmeri*) in Corn. K. M. Vollmer*, H. P. Wilson, T. E. Hines; Virginia Tech, Painter, VA (294)

2:45 Evaluating Target-site Mutations in Nicosulfuron and Glyphosate-resistant *Sorghum halepense*. A. N. Smith*, G. Kim, J. H. Westwood, S. Hagood; Virginia Tech, Blacksburg, VA (295)

3:00 Relative Competitive Abilities of Wild vs Cultivated Switchgrass: Assessing Invasive Potential for Mitigating Biofuel Risks. D. J. Palik*¹, A. A. Snow¹, A. L. Stottlemeyer¹, M. N. Miriti¹, E. A. Heaton²; ¹Ohio State University, Columbus, OH, ²Iowa State University, Ames, IA (296)

3:15 Break

3:30 Why the Anthesis-silking Interval is Important in Understanding Yield Loss in Maize. C. J. Swanton*, V. H. Gonzalez, E. Lee, L. Lukens; University of Guelph, Guelph, ON (297)

3:45 Using Perpendicular Cultivation with a Tine-Weeder to Improve In-Row Weed Control in Organic Peanut Production. W. C. Johnson III*; USDA-ARS, Tifton, GA (298)

4:00 Impact of Row Spacing, Plant Population and Herbicide Program on Weed Control and Yield in Sorghum. T. E. Besancon*, W. J. Everman, R. Riar, R. Weisz; North Carolina State University, Raleigh, NC (299)

4:15 Movement of Nitrogen in Corn and Weeds as Impacted by Different Nitrogen Sources, Rates, and Weed Removal Height. A. M. Knight*, W. J. Everman, D. Jordan, R. Heiniger, T. J. Smyth; North Carolina State University, Raleigh, NC (300)

4:30 Variety, Planting Date and Herbicides Affect Fiber and Oilseed Flax Biomass and Seed Yields in the Willamette Valley of Oregon. A. G. Hulting*, K. C. Roerig, D. W. Curtis, C. A. Mallory-Smith; Oregon State University, Corvallis, OR (301)

4:45 Competitiveness of Volunteer Corn in Sugarbeet. A. C. Harden*, C. L. Sprague; Michigan State University, East Lansing, MI (302)

WEDNESDAY AFTERNOON FEBRUARY 5

Section 2. Horticultural Crops

LOCATION: Plaza A

TIME: 1:00 PM - 4:00 PM

CHAIR: Peter Dittmar
University of Florida
Gainesville, FL

***SPEAKER**

1:00 Evaluation of Pendimethalin in Transplanted Lettuce. S. A. Fennimore*, J. S. Rachuy; University of California Davis, Salinas, CA (303)

1:15 Sweet Corn CYP Genotype Responses to HPPD- and PSII-inhibitor Tankmixes. E. Choe¹, M. M. Williams II*¹, R. A. Boydston², J. K. Pataky³; ¹USDA-ARS, Urbana, IL, ²USDA-ARS, Prosser, WA, ³University of Illinois, Urbana, IL (304)

1:30 Do Cultivar and Saflufenacil Application Timing Influence Weed Control and Growth Response of Succulent Pea? D. Robinson*, K. E. McNaughton; University of Guelph, Ridgetown, ON (305)

1:45 Evaluation of Post Emergence Herbicides for Purple Nutsedge Control in Tomato and Bell Pepper. N. S. Boyd*; University of Florida, Wimauma, FL (306)

2:00 Effect of Moisture-Limiting Conditions on Uptake and Translocation of Glyphosate Drift Rates on Processing Tomato. K. E. McNaughton*, P. H. Sikkema, D. Robinson; University of Guelph, Ridgetown, ON (307)

2:15 Response of Broccoli and Pepper to Simulated Drift of 2,4-D and Dicamba. D. Doohan*, M. Mohseni-Moghadam; The Ohio State University, Wooster, OH (308)

2:30 Effect of Mixing Sand and Pinebark on Preemergence Herbicide Efficacy in Blueberry. P. J. Dittmar*; University of Florida, Gainesville, FL (309)

2:45 Break

3:00 Evaluation of Herbicides for Fescue (*Festuca* spp.) Control in Wild Blueberry . G. L. Graham*; NBDAAF, Fredericton, NB (310)

3:15 Weed Control in Concord Grape. C. J. Phillippo*, B. Zandstra; Michigan State University, East Lansing, MI (311)

3:30 Maintaining Raspberry Weed Free with Clopyralid and Other Herbicides. B. Zandstra*, C. J. Phillippo; Michigan State University, East Lansing, MI (312)

3:45 Business Meeting

WEDNESDAY AFTERNOON FEBRUARY 5

Section 9. Weed Biology and Ecology

LOCATION: Regency E

TIME: 1:00 PM - 4:15 PM

CHAIR: Greta Gramig

North Dakota State University
Fargo, ND

***SPEAKER**

1:00 *Echium plantagineum*: Crop, Weed, Wrinkles, and Bees. F. Forcella*, C. Eberle; USDA, Morris, MN (313)

1:15 Genomics and Domestication of Field Pennycress (*Thlaspi arvense*). K. M. Dorn*, D. Marks, D. Wyse; University of Minnesota, St Paul, MN (314)

1:30 Comparative Growth of Kochia (*Kochia scoparia*) Accessions from Northern and Central Great Plains. A. V. Varanasi*, P. Jha, V. Kumar, S. Leland; Montana State University, Huntley, MT (315)

1:45 Flowering Biology of Red Sorrel (*Rumex acetosella*) in Lowbush Blueberry (*Vaccinium angustifolium*) Fields. S. N. White*¹, N. S. Boyd², R. C. Van Acker³, C. J. Swanton³, S. Newmaster³; ¹University of Guelph, Truro, NS, ²Gulf Coast Research and Education Center, Wimauma, FL, ³University of Guelph, Guelph, ON (316)

2:00 Impact of Temperature Increase on Phenology of *Ambrosia artemisiifolia* Biotypes. D. L. Benoit*; Agriculture and Agri-Food Canada, Saint-Jean-sur-Richelieu, QC (317)

2:15 Fall Panicum Interference in Sugarcane. D. Odero*¹, N. Havranek¹, M. Duchrow²; ¹University of Florida, Belle Glade, FL, ²Sugar Cane Growers Cooperative of Florida, Belle Glade, FL (318)

2:30 Past and Future Role of Wildfire, Humans and Climate in Nonindigenous Plant Invasions. B. D. Maxwell*¹, K. Taylor¹, T. Brummer², L. J. Rew¹, M. Lavin¹, A. Pauchard³, D. Peltzer⁴; ¹Montana State University, Bozeman, MT, ²Lincoln University, Lincoln, New Zealand, ³University of Concepcion, Concepcion, Chile, ⁴Landcare, Lincoln, New Zealand (319)

2:45 The Abundance of *Bromus tectorum* in Response to Wildfire and Fire Suppression. T. Seipel*, E. A. Lehnhoff, L. J. Rew; Montana State University, Bozeman, MT (320)

3:00 Ecology, Biology and Control of Some Exotic -invasive Weeds in Coastal Forests of British Columbia. R. R. Prasad*; Pacific Forestry Centre, Victoria, BC (321)

3:15 Break

3:30 Plant Community Resilience to Disturbance and *Linaria vulgaris* Invasion Across an Environmental Gradient. E. A. Lehnhoff*, B. D. Maxwell, L. J. Rew; Montana State University, Bozeman, MT (322)

3:45 Novel Bioenergy Crops: Sustainable Energy or Invaders in Waiting. L. L. Smith*, J. N. Barney; Virginia Tech, Blacksburg, VA (323)

4:00 Role of Carbon Amendments in Reversing Niche Construction in Invaded Ecosystems: A Case Study with *Polygonum cuspidatum* (Japanese knotweed). V. Suseela*¹, P. Alpert², N. Tharayil¹; ¹Clemson University, Clemson, SC, ²University of Massachusetts, Amherst, MA (324)

WEDNESDAY AFTERNOON FEBRUARY 5

Section 13. Integrated Weed Management

LOCATION: Plaza C

TIME: 1:00 PM - 5:00 PM

CHAIR: Chris Benedict

Washington State University
Bellingham, WA

***SPEAKER**

1:00 An Introduction to the Reduced-tillage Organic Systems Experiment (ROSE). W. Curran*¹, M. Dempsey¹, C. L. Keene², S. Mirsky³, M. Ryan⁴, B. Scott⁵, M. VanGessel⁵, L. Young³; ¹Penn State University, University Park, PA, ²Penn State University, State College, PA, ³USDA-ARS, Beltsville, MD, ⁴Cornell University, Ithaca, NY, ⁵University of Delaware, Georgetown, DE (325)

1:15 Weed Management in ROSE: The Power of Avoidance, Suppression, and Supplemental Control Tactics. M. A. Dempsey*¹, M. Ryan², C. L. Keene³, W. Curran¹, S. Mirsky⁴, M. VanGessel⁵; ¹Penn State University, University Park, PA, ²Cornell University, Ithaca, NY, ³Penn State University, State College, PA, ⁴USDA-ARS, Beltsville, MD, ⁵University of Delaware, Georgetown, DE (326)

1:30 Corn, Soybean, and Wheat Performance in the ROSE. C. L. Keene*¹, M. A. Dempsey², W. Curran², S. Mirsky³, M. Ryan⁴, M. VanGessel⁵; ¹Penn State University, State College, PA, ²Penn State University, University Park, PA, ³USDA-ARS, Beltsville, MD, ⁴Cornell University, Ithaca, NY, ⁵University of Delaware, Georgetown, DE (327)

1:45 Cover Crop Management in the ROSE: the Good, the Bad, and the Weedy. M. VanGessel*¹, C. L. Keene²,

W. Curran³, M. A. Dempsey³, S. Mirsky⁴, M. Ryan⁵, B. Scott¹; ¹University of Delaware, Georgetown, DE, ²Penn State University, State College, PA, ³Penn State University, University Park, PA, ⁴USDA-ARS, Beltsville, MD, ⁵Cornell University, Ithaca, NY (328)

2:00 Engineering Solutions to Improve the Biology: Making Cover Crop-based No-till Crop Production Work. S. Mirsky*¹, W. Curran², M. A. Dempsey², C. L. Keene³, M. Ryan⁴, M. VanGessel⁵, L. Young⁶; ¹USDA-ARS, Beltsville, MD, ²Penn State University, University Park, PA, ³Penn State University, State College, PA, ⁴Cornell University, Ithaca, NY, ⁵University of Delaware, Georgetown, DE, ⁶USDA, ARS, SASL, Beltsville, MD (329)

2:15 Putting the Pieces Together: Regional Recommendations from the ROSE. M. Ryan*¹, W. Curran², M. A. Dempsey², C. L. Keene³, S. Mirsky⁴, M. J. VanGessel⁵; ¹Cornell University, Ithaca, NY, ²Penn State University, University Park, PA, ³Penn State University, State College, PA, ⁴USDA-ARS, Beltsville, MD, ⁵University of Delaware, Georgetown, DE (330)

2:30 Long Term Management of Canada Thistle (*Cirsium arvense*) in a No-till Cropping System. W. E. May*¹, L. T. Juras², K. L. Sapsford³, F. A. Holm³; ¹Agriculture and Agri-Food Canada, Indian Head, SK, ²Dow AgroSciences Canada Inc., Saskatoon, SK, ³University of Saskatchewan, Saskatoon, SK (331)

2:45 Performance of Pre-emergence Herbicides for the Control of Rigid Ryegrass (*Lolium rigidum*) in Zero-till Wheat. S. Kleemann, C. Preston, G. S. Gill*; University of Adelaide, Adelaide, Australia (332)

3:00 Benefits and Economics of “The Critical Period of Competition” and “The ZeroSeed Threshold” Weed Management Strategies for Transitioning to Organic Farming. M. Mohseni-Moghadam*¹, D. Doohan¹, K. Amisi²; ¹OSU-OARDC, Wooster, OH, ²Grand Valley State University, Allendale, MI (333)

3:15 Break

3:30 Zone Tillage and Cover Crop Spatial Arrangement Effects on Weed Emergence and Competition in Organic

Sweet Corn Production. C. J. Lowry*, D. C. Brainard;
Michigan State University, East Lansing, MI (334)

3:45 No-Herbicide No-Till Soybean in the Northeastern United States. J. Liebert*, M. Ryan; Cornell University, Ithaca, NY (335)

4:00 Merits of Cover Crop Mixtures and Alternative Termination Methods in Organic Cropping Systems. R. E. Blackshaw*¹, K. Podolsky², M. Entz², S. Shirtliffe³;
¹Agriculture and Agri-Food Canada, Lethbridge, AB, ²University of Manitoba, Winnipeg, MB, ³University of Saskatchewan, Saskatoon, SK (336)

4:15 Living Mulches With and Without Herbicides to Control Annual Grasses in Sweet Corn (*Zea mays*). R. E. Nurse*¹, R. Mensah², D. Robinson³, G. Leroux⁴;
¹Agriculture and Agri-Food Canada, Harrow, ON, ²Laval University, Quebec, QC, ³University of Guelph, Ridgetown, ON, ⁴Universite Laval, Quebec, QC (337)

4:30 Changes in Weed Flora and its Management in Direct Seeded Rice in North Western India. A. Kumar*¹, D. Yadav², G. S. Gill³; ¹CCS Haryana Agricultural University, Hisar, India, ²CCS Haryana Agricultural University, Karnal, India, ³University of Adelaide, Adelaide, Australia (338)

4:45 Management of Complex Weed Flora in Direct Seeded Rice. M. S. Bhullar*¹, S. Kaur¹, T. Kaur¹, S. Kumar¹, G. S. Gill²; ¹Punjab Agricultural University, Ludhiana, India, ²University of Adelaide, Adelaide, Australia (339)

WEDNESDAY EVENING FEBRUARY 5 CWSS-SCM Industry Reception

LOCATION: Georgia AB
TIME: 7:00 PM - 9:00 PM

THURSDAY MORNING FEBRUARY 6 CWSS-SCM Business Meeting Breakfast

LOCATION: Georgia AB
TIME: 6:30 AM - 8:00 AM
CHAIR: David Clements
Trinity Western University
Langley, BC

THURSDAY MORNING FEBRUARY 6
Addressing Global Herbicide Resistance Issues -
Industry Perspective and Initiatives

LOCATION: Regency D

TIME: 8:00 AM - 12:00 PM

CHAIR: Mark Peterson

Dow AgroSciences

West Lafayette, IN

***SPEAKER**

8:00 A Brief History of the Parallel Evolution of Herbicide Resistance and Related Industry Efforts.

C. Gerwick*; Dow AgroSciences, Indianapolis, IN (340)

8:20 Economic Drivers for New Technologies and Sustainable Weed Management.

D. Palmer*; Dow AgroSciences, Indianapolis, IN (341)

8:40 Collaborations Between Industry and Regulatory Agencies to Address Resistance.

B. Chism*; US EPA, Washington, DC (342)

9:00 Collaborations Between Industry and University Extension to Address Resistance.

C. L. Sprague*; Michigan State University, East Lansing, MI (343)

9:20 Stewardship and How it Affects Resistance Management.

B. Glenn*¹, S. McLallen²; ¹CropLife America, Washington, DC, ²CropLife Foundation, Washington, DC (344)

9:40 Global Herbicide Resistance Action Committee - Industry Collaboration to Address Herbicide Resistance.

J. K. Soteres*; Monsanto, St. Louis, MO (345)

10:00 Break

10:15 Panel Discussion - Technological Advancements in Weed Control and the Part They Play in Addressing Herbicide Resistance.

M. A. Peterson*¹, B. R. Miller², R. Cole³, A. Cotie⁴; ¹Dow AgroSciences, West Lafayette, IN, ²Syngenta, Minnetonka, MN, ³Monsanto, St. Louis, MO, ⁴Bayer CropScience, Research Triangle Park, NC (346)

11:15 Panel and Presenters Discussion

THURSDAY MORNING FEBRUARY 6

Section 1. Agronomic Crops

LOCATION: Regency F

TIME: 8:00 AM - 11:00 AM

CHAIR: Prashant Jha

Montana State University

Huntley, MT

*SPEAKER

8:00 Corn and Italian Ryegrass Competition. V. K. Nandula*; USDA-ARS, Stoneville, MS (347)

8:15 Weed Dynamics and Productivity of Winter Maize + Potato Intercropping System as Influenced by Different Weed Management Strategies in *Shiwalik* Foot-Hills of North-West Himalayas. A. K. Kumar*, J. K. Kumar, B. C. Sharma, P. K. Kour; University of Agricultural Sciences and Technology, Jammu, India (348)

8:30 Managing Pokeweed in Pennsylvania No-Till Corn and Soybean Fields. K. M. Patches*, W. Curran; Penn State University, University Park, PA (349)

8:45 Crop Response to Dicamba Applications on Soybean Event MON 87708. P. C. Feng*; Monsanto, Saint Louis, MO (350)

9:00 Performance of Engenia™ Herbicide Programs in Dicamba Tolerant Crops. J. Frihauf*, S. Bowe, L. Bozeman; BASF Corporation, Research Triangle Park, NC (351)

9:15 Use of Proper Application Techniques to Mitigate Off-Target Movement of Glyphosate + Dicamba During Soybean Reproductive Development. J. K. Norsworthy*¹, L. Steckel², D. B. Reynolds³, T. Irby⁴, T. Barber⁵, A. Mills⁶, R. Montgomery⁷, J. Sandbrink⁸, J. Travers⁸, K. Remund⁸; ¹University of Arkansas, Fayetteville, AR, ²University of Tennessee, Jackson, TN, ³Mississippi State University, Mississippi State, MS, ⁴Mississippi State University, Starkeville, MS, ⁵University of Arkansas, Lonoke, AR, ⁶Monsanto, Scott, MS, ⁷Monsanto, Jackson, AR, ⁸Monsanto, St. Louis, MO (352)

9:30 Stewardship of Engenia™ Herbicide. W. E. Thomas*¹, L. L. Bozeman², S. Bowe¹; ¹BASF Corporation, Research Triangle Park, NC, ²BASF, Raleigh, NC (353)

9:45 Enlist Weed Control System for Canada. A. W. MacRae*¹, A. McFadden²; ¹Dow AgroSciences Canada, Winnipeg, MB, ²Dow AgroSciences Canada Inc, Guelph, ON (354)

10:00 Break

10:15 Drift and Tank Contamination of 2,4-D in Non-tolerant Cotton. M. R. Manuchehri*¹, P. A. Dotray², T. S. Morris³, J. Keeling³, P. A. Baumann⁴, G. D. Morgan⁵; ¹Texas Tech Univ, Lubbock, TX, ²Texas Tech Univ., Texas A&M AgriLife Research and Extension, Lubbock, TX, ³Texas A&M AgriLife Research, Lubbock, TX, ⁴Texas A&M University, College Station, TX, ⁵Texas A&M AgriLife Extension, College Station, TX (355)

10:30 Metabolic Fate of 2,4-D in Enlist Soybeans. J. J. Skelton*¹, D. Simpson², A. V. Lygin³, D. E. Riechers³; ¹University of Illinois, Champaign, IL, ²Dow AgroSciences, Indianapolis, IN, ³University of Illinois, Urbana, IL (356)

10:45 Peanut Injury and Yield Reduction in Response to Simulated 2,4-D and Dicamba Drift at Two Growth Stages. R. G. Leon¹, B. J. Brecke*¹, J. A. Ferrell²; ¹University of Florida, Jay, FL, ²University of Florida, Gainesville, FL (357)

THURSDAY MORNING FEBRUARY 6

Section 5. Wildland and Aquatic Invasive Plants

LOCATION: Plaza B

TIME: 8:00 AM - 10:45 AM

CHAIR: Andrew Skibo

SePRO Corporation

Fort Collins, CO

***SPEAKER**

8:00 Aquatic and Riparian Weed Problems in Brazil: Research and Management Opportunities. L. Anderson*¹, D. Matos²; ¹Waterweed Solutions, Inverness, CA, ²Ecologia e Conservacao Depto de Hidrobiologia, UFSCar, Brazil (358)

8:15 Herbicide Trials for Management of Flowering Rush in Minnesota. J. D. Madsen*, B. Sartain, G. Turnage; Mississippi State University, Mississippi State, MS (359)

8:30 Metabolic Profiles of the Submersed Aquatic Weed *Hydrilla verticillata* Treated Alone and in Combination with ALS-inhibiting Herbicides and Endothall. M. A. Heilman*¹, S. T. Meadows², R. J. Richardson², J. D. Burton²; ¹SePRO Corporation, Carmel, IN, ²North Carolina State University, Raleigh, NC (360)

8:45 Advances in Aquatic Weed & Algae Control in Western Irrigation Ditches. A. Z. Skibo*¹, S. Nissen², M. Heilman³; ¹SePRO Corporation, Fort Collins, CO, ²Colorado State University, Fort Collins, CO, ³SePRO Corporation, Carmel, IN (361)

9:00 Field and Mesocosm Evaluations of Granular Herbicide and Pre-emergent Use Patterns for Control of Flowering Rush (*Butomus umbellatus*). A. Z. Skibo*¹, M. A. Heilman²; ¹SePRO Corporation, Fort Collins, CO, ²SePRO Corporation, Carmel, IN (362)

9:15 Native Prairie Functional Groups to Resist Invasion by *Cirsium arvense*. R. L. Becker*¹, M. J. Haar², L. D. Klossner³; ¹University of Minnesota, St. Paul, MN, ²National Park Service, Interior, SD, ³University of Minnesota, Lamberton, MN (363)

9:30 Current Trends of Invasive Weed Species in Greater-Himalayan Region. A. K. Kumar*, J. K. Kumar, B. C. Sharma, N. S. Sharma; University of Agricultural Sciences and Technology, Jammu, India (364)

9:45 Seed Production and Predation of Amur Honeysuckle (*Lonicera maackii*). R. J. Smeda*, S. A. Riley; University of Missouri, Columbia, MO (365)

10:00 An Empirical Test of a Novel Model to Determine the Total Impact of an Invasive Grass. D. R. Tekielia*, J. N. Barney; Virginia Tech, Blacksburg, VA (366)

10:15 Aminopyralid Research Summary for Aquatic Labeling. D. E. Barnekow*¹, V. F. Peterson², J. J. Jachetta¹, P. L. Havens¹, L. A. Brinkworth¹, W. T. Haller³, W. N. Kline⁴, J. L. Troth¹; ¹Dow AgroSciences, Indianapolis, IN, ²Dow AgroSciences, Mulino, OR, ³University of Florida, Gainesville, FL, ⁴Dow AgroSciences, Duluth, GA (367)

10:30 Business Meeting

THURSDAY MORNING FEBRUARY 6
Section 7. Education and Extension

LOCATION: Plaza C

TIME: 8:00 AM - 11:15 AM

CHAIR: Darrin Dodds

Mississippi State University

Mississippi State, MS

***SPEAKER**

8:00 UGA Weed Webinar: How We Conducted 18 County Production Meetings in One Day. E. P. Prostko*, S. Culpepper, K. Lewis, P. M. Eure; University of Georgia, Tifton, GA (368)

8:15 Using Polycom™ to Reach Massive Extension Audiences for Pesticide Education. F. M. Fishel*¹, L. A. Gettys²; ¹University of Florida, Gainesville, FL, ²University of Florida, Fort Lauderdale, FL (369)

8:30 Weed Science in Social Media: Lesson Learned and Gaps Identified. J. Person*, J. K. Soteres; Monsanto, St. Louis, MO (370)

8:45 Developing a Multi-State Weed Science Training. T. A. Baughman*¹, P. A. Baumann², P. A. Dotray³; ¹Oklahoma State University, Ardmore, OK, ²Texas A&M University, College Station, TX, ³Texas Tech University, Lubbock, TX (371)

9:00 Management of Glyphosate and ALS Resistant Horseweed. B. Reeb*, M. M. Loux; The Ohio State University, Columbus, OH (372)

9:15 On-farm Use of Chelated Iron to Safen Grain Sorghum Following Pyrasulfotole Plus Bromoxynil Applied POST. R. M. Merchant*; University of Georgia, Tifton, GA (373)

9:30 Clopyralid and Dicamba Residue Impacts on Potatoes and Weeds. S. Seefeldt*¹, R. A. Boydston², P. N. Kaspari³; ¹University of Alaska, Fairbanks, AK, ²USDA-ARS, Prosser, WA, ³University of Alaska Fairbanks, Delta Junction, WA (374)

9:45 Current and Future Stewardship Training for Engenia™ Herbicide. L. Bozeman*¹, D. Pepitone¹, S.

Wilson¹, R. E. Wolf²; ¹BASF Corporation, Research Triangle Park, NC, ²Wolf Consulting and Research, Mahomet, IL (375)

10:00 Break

10:15 Weed Distribution and Associated Field Management Practices in Alberta. C. Neeser*¹, J. Y. Leeson², N. Kimmel³, M. Vadnais³; ¹Government of Alberta, Brooks, AB, ²Agriculture and Agri-Food Canada, Saskatoon, SK, ³Government of Alberta, Edmonton, AB (376)

10:30 Herbicide Resistant Weeds in Iowa; Update and Assessment. M. D. Owen*; Iowa State University, Ames, IA (377)

10:45 Weed Invasion-A Case Study from Pakistan. K. B. Marwat*; SBB University, Sheringal, Dir Upper, Pakistan, Sheringal, Dir Upper, Pakistan (378)

11:00 Business Meeting

THURSDAY MORNING FEBRUARY 6

Section 11. Physiology

LOCATION: Regency E

TIME: 8:00 AM - 12:00 PM

CHAIR: Todd Gaines

University of Western Australia
Crawley, WA, Australia

***SPEAKER**

8:00 Signatures of Selection and EPSPS Gene Copy Number Across Genus *Amaranthus* and the Potential Origins of Glyphosate Resistance. A. L. Lawton-Rauh*¹, K. E. Beard¹, N. R. Burgos², S. J. Barfield¹, J. D. Burton³; ¹Clemson University, Clemson, SC, ²University of Arkansas, Fayetteville, AR, ³North Carolina State University, Raleigh, NC (379)

8:15 Current Status of Glyphosate Resistant Kochia and Mechanism of Resistance in North America. P. Westra*¹, E. Westra¹, A. Wiersma², D. Giacomini¹; ¹Colorado State University, Fort Collins, CO, ²Michigan State University, East Lansing, MI (380)

8:30 EPSPS Gene Amplification Confers Glyphosate Resistance in Kochia (*Kochia scoparia*) Populations from Montana. V. Kumar*¹, P. Jha¹, P. Westra², E. Westra², D. Giacomini², C. Vanhorn²; ¹Montana State University, Huntley, MT, ²Colorado State University, Fort Collins, CO (381)

8:45 Mechanism of Glyphosate Resistance in Kochia (*Kochia scoparia*). M. Jugulam*, K. Niehues, B. Gill; Kansas State University, Manhattan, KS (382)

9:00 Extensive Gene Amplification of EPSPS Endows Glyphosate Resistance in Two *Bromus diandrus* (Great Brome) Populations in Australia. J. M. Malone, S. Morran, P. Boutsalis, N. Shirley, C. Preston*; University of Adelaide, Glen Osmond, Australia (383)

9:15 New Evidence for Multiple Glyphosate-Resistance Mechanisms Within a Population of Common Ragweed (*Ambrosia artemisiifolia*). J. T. Parrish*¹, M. M. Loux¹, D. M. Mackey¹, L. K. McHale¹, D. Sammons², D. Wang², E. L. Ostrander³, D. A. D'Avignon³, X. Ge³, P. Westra⁴, C. R. Van Horn⁴, A. Wiersma⁵; ¹The Ohio State University, Columbus, OH, ²Monsanto, St. Louis, MO, ³Washington University, St. Louis, MO, ⁴Colorado State University, Fort Collins, CO, ⁵Michigan State University, East Lansing, MI (384)

9:30 Determining the Mechanism of Resistance to Glyphosate in Two Biotypes of Giant Ragweed. T. Jeffery*¹, C. Hall¹, M. McLean¹, F. J. Tardif¹, P. H. Sikkema², D. Robinson², M. B. Lawton³; ¹University of Guelph, Guelph, ON, ²University of Guelph, Ridgetown, ON, ³Monsanto Canada, Guelph, ON (385)

9:45 Updates on Molecular Response of Glyphosate Resistant Giant Ragweed (*Ambrosia trifida*). C. R. Van Horn*, P. Westra; Colorado State University, Fort Collins, CO (386)

10:00 Break

10:15 Inheritance of Resistance to Glyphosate, Paraquat and Clethodim in a Multiple Resistant Population of Rigid Ryegrass (*Lolium rigidum*) from South Australia. S. Morran*, P. Boutsalis, C. Preston; University of Adelaide, Glen Osmond, Australia (387)

10:30 Glyphosate Impacts Phytohormone Signaling and Vegetative Growth Patterns from Underground Adventitious Buds of Leafy Spurge. M. Dogramaci*, J. V. Anderson, M. E. Foley; USDA-ARS, Fargo, ND (388)

10:45 Arylex™ Mode and Site of Action Characterization. J. L. Bell*; Dow AgroSciences LLC, Indianapolis, IN (389)

11:00 Understanding the Differential Responses of *Setaria viridis* (Green Foxtail) and *Setaria pumila* (Yellow Foxtail) to Pyroxsulam. N. M. Satchivi*, G. J. deBoer; Dow AgroSciences, Indianapolis, IN (390)

11:15 Physiological Basis of Reduced Mesotrione Efficacy under Elevated Growth Temperatures in Palmer Amaranth. M. Jugulam*, A. S. Godar, P. Prasad; Kansas State University, Manhattan, KS (391)

11:30 Effect of Growth Stage, Light, and Temperature on Hairy Fleabane (*Conyza bonariensis*) Control with Postemergence Herbicides. M. R. Dennis¹, S. I. Rios¹, K. Hembree², J. Bushoven¹, A. Shrestha*¹; ¹California State University, Fresno, CA, ²University of California Cooperative Extension, Fresno, CA (392)

11:45 A Variety of *psbA* Mutations in *Amaranthus* sp. Infesting Carrot Production. G. Davis*, F. J. Tardif; University of Guelph, Guelph, ON (393)

AUTHOR INDEX

A

- Acciaresi, Horacio A. 87, 88
Ackley, Bruce A. 153
Afifi, Maha 126, 127
Agostinetti, Dirceu 108
Aldrich-Wolfe, Laura 139
Alexander, Brendan C. 74
Alpert, Peter 324
Alvarez, Reinaldo 122
Amirsadeghi, Sasan 127
Amisi, Karen 333
Anderson, James V. 187, 388
Anderson, Kelly 273
Anderson, Lars 358
Andersson, Lars 124
Andrew, Izzadora K. 234
Aramrak, Attawan 98
Aronsson, Helena 124
Arsenovic, Marija 45, 281
Ashigh, Jamshid 67, 92
Ashworth, Michael B. 238, 242
Askew, Shawn 143, 144, 145, 148, 155,
254, 255, 266, 289
Askew, Whitnee 145
Asner, Greg 137
Aulakh, Jatinder 243

B

- Bae, Jichul 84, 132
Bagavathiannan, Muthukumar V. 65, 220, 250
Bakht, Tamana 241
Ball, Daniel A. 81
Banniza, Sabine 180
Banuelos, Gerardo 123
Barber, Thomas 352
Barfield, Sarah J. 379
Barnekow, David E. 367
Barney, Jacob N. 219, 323, 366
Baron, Jerry 45, 281
Baron, Vern 237
Barrett, Michael 52, 216, 253
Barro, Francisco 9, 97
Barroso, Judit 73

Bary, Andy	35
Baucom, Regina S.	138
Baughman, Todd A.	371
Baumann, Paul A.	292, 355, 371
Baxter, Jamie	168
Beacham, Jacki	85
Beard, Kristin E.	156, 379
Beck, George K.	244
Becker, Roger L.	363
Beckett, Thomas H.	199, 201
Beckie, Hugh J.	3, 74, 159, 232, 252
Beffa, Roland	164, 288
Bell, Jared L.	95, 389
Benaragama, Dilshan	128
Benedict, Chris A.	35
Benoit, Diane L.	38, 84, 132, 317
Beres, Brian L.	196
Beres, Zachery T.	153
Bergkvist, Göran	124
Besancon, Thierry E.	25, 299
Best, Norman B.	158
Betha, Sridevi	90
Bhullar, Makhan S.	339
Biazzo, Jeromy	55
Black, Howard	160
Blackshaw, Robert E.	62, 159, 237, 336
Blakelock, Graham	227
Blanchett, Brian H.	113, 269
Boddy, Louis G.	72, 282
Bolaños, Andres	60
Bond, Jason	89, 101
Borrelli, Kristy	121
Bouladier Laprade, Chanelle	38
Boutsalis, Peter	383, 387
Bowe, Steven	351, 353
Boyd, Nathan S.	306, 316
Boydston, Rick A.	77, 304, 374
Bozeman, Luke L.	351, 353, 375
Bradley, Kevin W.	6, 250, 290
Brainard, Daniel C.	223, 225, 334
Brandenberger, Lynn	43
Brants, Ivo	11
Braverman, Michael P.	281
Brecke, Barry J.	357
Breeden, Gregory K.	146
Brenneman, Timothy B.	246
Bridges, Melissa	135

Brim-DeForest, Whitney B.	72
Brinkworth, Louise A.	367
Brosnan, James	146, 148, 256
Brown, Christine	168
Brown, Rebecca N.	174
Bruening, Chris	58
Brummer, Tyler	56, 73, 135, 319
Bruns, Dain E.	201
Bryson, Charles T.	7
Burgos, Nilda R.	160, 379
Burke, Ian C.	77, 81, 98, 109, 121
Burke, Tara L.	216
Burns, Erin	163
Burrell, Millie	86, 188
Burrows, Mary	224
Burton, James D.	156, 360, 379
Bushoven, John	392
Busi, Roberto	164
Bybee-Finley, K. Ann	80

C

Cahoon, Charles W.	208
Caicedo, Ana	160
Camacho, Daniel	122
Campbell, Joan	24
Campbell, Lesley	131
Campbell, Lesley G.	227
Carbonari, Caio A.	93, 94
Carlson, Dale	198
Carter, Arron H.	98
Cavalieri, Andrea	27
Cecilia, Abramoff	87
Charbonneau, Pamela M.	169
Chase, Carlene A.	40
Chauhan, Bhagirath S.	233
Chetetz, Benny	116, 270
Chism, Bill	342
Choe, Eunsoo	304
Churchman, Whitney M.	52
Clark, Andrea C.	258
Clay, Sharon A.	4, 268
Claypool, David A.	230
Clayton, George W.	245
Clements, David	74
Cobb, Jasper	262
Coburn, Carl W.	154

Cogger, Craig	35
Cole, Rick	346
Coles, Ken	196
Collakova, Eva	255
Collins, Doug	35
Constantin, Jamil	17, 114
Corbin, Andrew	35
Costa, Jaime	11
Cotie, Arlene	346
Coulman, Bruce	175
Couto, Ramon	50
Cox, Michael C.	143, 144
Cruz, Isela	60
Cully, Scott E.	199
Culpepper, Stanley	39, 368
Cundiff, Gary	61
Cunningham, Ashley	67
Curran, William	33, 57, 325, 326, 327, 328, 329, 330, 349
Currie, Randall	229
Curtis, Daniel W.	301

D

D'Amato, Anthony W.	190
D'Avignon, Dana A.	384
Dagua, Jeny N.	40
Dahl, Gregory K.	258, 260
Daniell, Tim J.	271
Darbyshire, Stephen J.	76
Datta, Avishek	58, 118
Davies, Phil	8
Davis, Adam S.	191
Davis, Gareth	393
Davis, Richard F.	246
Davis, Vince	250
Dayan, Franck E.	286
De Prado, Rafael	9, 11, 22, 97, 103, 119
deBoer, Gerrit J.	390
Degenhardt, Rory	194, 195, 210
Delaney-Falcon, Dawn	224
Dempsey, Logan	263, 264
Dempsey, Mark A.	325, 326, 327, 328, 329, 330
Dennis, Michelle R.	392
Derr, Jeffrey	142, 259
Dias, Ana Carolina R.	112, 115
Dickinson, Matthew	192

Dille, Anita	226, 229
Dimmic, Matt	167
DiTommaso, Antonio	55, 218
Dittmar, Peter J.	309
Dixon, Tyler	34
Dodds, Darrin M.	34
Dogramaci, Munevver	388
Dollete, Eugene S.	219
Dominguez-Valenzuela, Jose A.	11
Doohan, Douglas	308, 333
Dorn, Kevin M.	314
Dosdall, Lloyd M.	267
Dotray, Peter A.	14, 15, 355, 371
Downs, Michael	151, 152
Drinkwater, Laurie E.	140
Du, Zijin	167
Duan, Yushan	109
Duchrow, Mathew	318
Duke, Stephen O.	280
Dutta, Bhabesh	246
Duus, Joachim	197
Dvorkin, Gal	116, 270
Dyck, Miles	130
Dyer, William E.	141, 163

E

Eberle, Carrie	313
Ehlert, Krista A.	265
Ellis, Andrew T.	240
Elmore, Matthew	146
Enloe, Stephen F.	214, 243
Entz, Martin	179, 336
Erazo-Barradas, Mauricio	268
Erdahl, Brian	201
Erickson, John E.	228
Esser, Andrew	226
Etheredge, L M.	292
Eubank, Thomas	89, 250
Eure, Peter M.	32, 39, 368
Evans, Jeffrey A.	191
Everitt, John D.	14
Everman, Wesley J.	25, 111, 208, 299, 300
Ezell, Andrew W.	209, 211, 212, 213, 215

F

Falk, Kevin C.	3
---------------------	---

Fan, Lucy	167
Farnham, Mark W.	44
Feng, Paul C.	205, 350
Fennimore, Steven A.	303
Fernandez, Pablo	103
Ferrell, Jason A.	217, 228, 357
Figge, Andrea	164
Fischer, Albert J.	72, 166
Fishel, Fred M.	369
Fletcher, Reginald S.	1
Flower, Ken C.	238, 242
Foley, Michael E.	388
Forcella, Frank	268, 313
Ford, Laura R.	18, 183
Foresman, John P.	199
Franssen, Aaron S.	117
Frihauf, John	351
Fuerst, E. Patrick	121, 187

G

Gaines, Todd A.	164
Gaire, Rashmi	68
Gal, Jessica L.	126
Gallagher, Robert S.	187
Gannon, Travis	46, 147, 256
Ge, Xia	384
Gealy, David	160
Geddes, Charles M.	178
Gednalske, Joe V.	258, 260
Geier, Pat	229
Gemelli, Alexandre	17
Gerwick, Cliff	340
Gettys, Lyn A.	369
Giacomini, Darci A.	75, 167, 380, 381
Gill, Bikram	382
Gill, Gurjeet S.	332, 338, 339
Gillies, Sharon L.	275
Gilsinger, Jesse J.	205
Giménez, M ^a J.	97
Glenn, Barbara	344
Goatley, Mike	145
Godar, Amar S.	90, 102, 107, 251, 391
Goffnett, Amanda M.	30
Goggin, Danica	161
Gogos, George	58
Gomes, Giovanna L.	93, 94

Gonzalez, Rafael	49
Gonzalez, Victor H.	133, 297
Gonzalez-Torralva, Fidel	11, 97, 103, 119
Goolsby, John A.	188
Goosey, Hayes B.	222
Graham, Gavin L.	310
Green, JD	51
Gregoire, Paul	2, 129
Gretzinger, Mike	196
Grey, Timothy L.	20, 26, 29, 113, 246, 269
Griffin, James L.	206
Griffith, Griff	284
Grogan, Jason	211, 213, 215
Grohs, Robert D.	41
Guice, J. B.	61, 262
Gulden, Robert H.	2, 27, 120, 129, 178, 179, 237, 271

H

Haar, Milt J.	363
Hagood, Scott	289, 295
Haile, Teketel	120
Haines, Jeffrey	106
Halde, Caroline	179
Hall, Chris	385
Hall, Linda M.....	74, 120, 159, 184, 237
Haller, William T.	367
Hamman, William M.	196
Hammermeister, Andrew M.	179
Han, Heping	164
Hansen, Stephanie A.	4
Hanson, Brad D.	36, 78
Hanson, Stephan	85
Haramoto, Erin	223, 225
Harden, Amanda C.	302
Harden, John	198
Hardwick, Marshall	206
Hare, Donald D.	194, 195, 210
Harker, Kenneth N.	120, 196, 237, 245
Harrington, Timothy B.	190
Harrison, Howard F.	44
Havens, Patrick L.	367
Havranek, Nikol	28, 318
Hayes, Robert M.	13
Haygood, Bobby B.	240
He, Qiwei	263, 264
Heap, Ian M.	10, 249

Heaton, E A.	296
Heilman, Mark A.	360, 361, 362
Heiniger, Ron	300
Hembree, Kurt	36, 78, 392
Hemminghaus, John	261
Hennemann, Laura J.	258
Henry, Hugh	157
Herrera-Reddy, Angelica	53
Herrmann, Johannes	164
Herzog, Trevor	248
Hill, Erin C.	63
Hines, Thomas E.	294
Hirsch, Rachel	168
Ho, Matthew	219
Hoagland, Robert E.	96
Hobbie, Erik A.	140
Holland, Leslie	85
Holloway, James C.	201
Holm, F A.	331
Hong, Haiping	198
Horneck, Donald	247
Horvath, David	4
Houghton, Dustin M.	177
Hu, Shuijin	111
Huebner, Cynthia	192
Huerd, Sheri	139
Hufbauer, Ruth A.	189
Hughes, Flint	137
Hulting, Andrew G.	42, 59, 301
Hyun, Kyu Hwan	59

I

Intanon, Suphannika	42
Irby, Trent	352
Isman, Murray B.	283

J

Jachetta, John J.	367
Jacob, Cory E.	130
Jain, Rakesh	201
Jang, Se Ji	59
Janmaat, Alida	275, 279
Jasieniuk, Marie	36, 53, 78
Javaid, Muhammad M.	231
Jeffery, Taylor	385

Jeffries, Matthew	46, 147, 256
Jha, Prashant	23, 83, 193, 315, 381
Jhala, Amit J.	19, 204, 293
Jiménez, Francisco	22
Johnson, Eric N.	3, 180, 196, 237, 252
Johnson, Jerry W.	20
Johnson, M Tracy	137
Johnson, William	250
Johnson III, Wiley C.	246, 298
Johnston, Chris	257
Jones, Jonathon M.	150
Jordan, David	156, 208, 300
Jordan, Katerina S.	170
Jordan, Nicholas R.	139
Jugulam, Mithila	90, 99, 102, 107, 382, 391
Jurado, Ana I.	22
Juras, Leonard T.	194, 195, 210, 331

K

Kao-Kniffin, Jenny T.	171
Kaspari, Phil N.	374
Kaur, Simerjit	339
Kaur, Tarundeep	339
Keeling, Jack W.	14, 15, 355
Keene, Clair L.	325, 326, 327, 328, 329, 330
Kegode, George O.	76
Keith, Barbara	141, 163
Kennedy, Ann C.	187
Kenworthy, Kevin E.	47
Kerstetter, Randy A.	167
Kessler, Kallie C.	244
Kidwell, Kimberlee K.	98
Kim, Do Ik	59
Kim, Gunjune	295
Kim, Kyu Ri	59
Kimmel, Nicole	159, 376
Kinkel, Linda	139
Kleemann, Samuel	332
Klein, Patricia E.	86, 188
Kleist, Annabelle	53
Kline, William N.	367
Klossner, Lee D.	363
Klypina, Nina	67
Knezevic, Stevan Z.	58, 117, 118, 293
Knight, Alexandra M.	111, 300
Kniss, Andrew	154, 193, 229, 230

Kobler, John	237
Koenig, Richard T.	121
Kohrt, Jonathon R.	12
Konduru, Srinivasa	36, 37
Koo, Suk-Jin	255
Koskinen, William C.	114
Kour, Paramjeet K.	348
Kowalewski, Alec R.	172
Kruger, Greg	34, 250, 293
Kuester, Adam	138
Kuk, Yong In	59
Kulkarni, Sharavari S.	267
Kumar, Anil K.	348, 364
Kumar, Ashok	338
Kumar, Jai K.	348, 364
Kumar, Sunny	339
Kumar, Vipin	23, 83, 315, 381
Kunkel, Daniel	45, 281
Kurtural, Kaan	37

L

La Vallee, Bradley J.	205
Lacoste, Myrtille	65, 220
Lamb, Eric G.	175
Lambert-Beaudet, Camille	62
Lampugnani, Gladys	87
Landry, Randall L.	70, 203, 206
Langaro, Ana C.	108
Langston, Vernon B.	240
Larsen, Todd G.	276
Lassiter, Ralph B.	240
Latorre, Débora O.	93
Laternus Tidemann, Breanne	186
Laubhann, Daniel	125
Lavin, Mathew	56, 82, 319
Lawless, Matthew E.	175
Lawrence, Nevin C.	81, 109
Lawson, Sara	5
Lawton, Mark B.	385
Lawton-Rauh, Amy L.	156, 379
Lay, Katerina	156
Lee, Elizabeth	126, 127, 133, 297
Leeson, Julia Y.	232, 376
Lehnhoff, Erik A.	82, 135, 141, 163, 320, 322
Leland, Shane	23, 83, 315
Leon, Ramon G.	47, 148, 228, 357

Leroux, Gilles	38, 337
Lewis, Derek W.	27
Lewis, Ken	368
Li, Xiao	113, 269
Liebert, Jeff	335
Lindgren, Cory	149
Lindquist, John L.	19, 221
Lingenfelter, Dwight	57
Linguist, Bruce A.	72
Lins, Ryan D.	199
Lopez, Enrique	60
Lopez, Javier	40
Lorentz, Lothar	164
Losey, John E.	218
Loux, Mark M.	153, 250, 372, 384
Low, Ryan H.	159, 184
Lowry, Carolyn J.	334
Lugo, Maria L.	50
Lukens, Lewis	126, 127, 133, 297
Luque De Castro, Marię½a Dolores	9
Luzzi, Bruce	198
Lygin, Anatoli V.	162, 356
Lyons, Eric M.	170

M

Ma, Li	69
Macinnes, Alison	261
Mackey, David M.	153, 384
MacRae, Andrew W.	194, 195, 210, 354
Madsen, John D.	359
Magidow, Lillian C.	258, 260
Mahoney, Denis J.	46, 147
Maiwald, Frank	164
Malik, Mayank S.	204
Mallory-Smith, Carol A.	42, 59, 105, 247, 301
Malone, Jenna M.	383
Mangold, Jane M.	265
Mankin, Luke	198
Mann, Rick K.	240
Manuchehri, Misha R.	14, 355
Mao, Di Li	8
Mariani, Franciele	108
Marks, David	314
Maroli, Amith	165
Marrone, Pamela G.	282
Marshall, Brett	71

Martins, Bianca	105
Marwat, Khan B.	378
Matlack, Glenn	192
Matocha, M. E.	292
Matos, Ana K.	94
Matos, Dalva	358
Matthews, Joseph	291
Maxwell, Bruce D.	56, 73, 82, 135, 141, 319, 322
May, William E.	331
McCall, David S.	266
McCauley, Cara L.	95
McCloskey, William B.	79
McCullough, Patrick	48, 257
McElroy, Scott	148
McFadden, Allan	183, 354
McGill, David	192
McGinty, Joshua A.	292
McHale, Leah K.	384
McKenzie, Sean C.	222
McKenzie-Gopsill, Andrew G.	127
McLallen, S.	344
McLean, Michael	385
McMurray, Larn	8
McNaughton, Kristen E.	305, 307
Meadows, Sarah T.	360
Menalled, Fabian	141, 163, 222, 224, 265
Menendez, Julio	103, 122
Mensah, Rolland	337
Merchant, Rand M.	14, 373
Milbrath, Lindsey R.	55
Miller, Brett R.	346
Miller, Gary	192
Miller, Timothy W.	277
Miller, Val	272
Miller, Zachariah	224, 265
Mills, J. Anthony	34, 352
Minocha, Rakesh	192
Miriti, M N.	296
Mirsky, Steven	80, 325, 326, 327, 328, 329, 330
Mitchell, Susan	271
Mohr, Ramona M.	196
Mohseni-Moghadam, Mohsen	92, 308, 333
Molin, William	89, 91, 104
Monaco, Cecilia	87, 88
Montes, German	28
Montgomery, Robert	352
More, Dwight	198

Morgan, Gaylon D.	292, 355
Morishita, Don	24
Morran, Sarah	383, 387
Morris, Edward	85
Morris, Scott H.	55
Morris, Troy S.	14, 15, 355
Moss, Justin W.	20
Murray, Leigh	85
Myers, Judith H.	279

N

Nandula, Vijay K.	89, 101, 104, 347
Navarro, Santiago	284
Naylor, Bridgett J.	273
Neal, Joseph	173
Neeser, Chris	376
Nettleton, Jacqueline A.	3
Newmaster, Steven	316
Nichols, Robert L.	156
Niehues, Kindsey	99, 382
Nissen, Scott J.	244, 361
Norsworthy, Jason K.	65, 220, 250, 352
Noyes, David C.	223
Nurse, Robert E.	64, 74, 157, 183, 337

O

O'Donovan, John T.	237, 245
O'Halloran, Ivan	181
O'Neill, Kevin M.	222
O'Sullivan, John	41
Odero, D. Calvin	28, 230, 318
Okada, Miki	78
Okubara, Patricia A.	187
Oldach, Klaus	8
Olea, Ignacio L.	16
Oliveira, Rubem S.	17, 114
Omielan, Joe	51, 54
Ominski, Kim H.	179
Ostrander, Elizabeth L.	106, 384
Ott, Mark-Christoph	164
Overholt, William A.	188
Owen, Micheal D.	377
Owens, Daniel K.	286

P

Padmanabhan, Karthik Ramaswamy	158
--------------------------------------	-----

Page, Eric R.	64
Pageau, Denis	237
Palik, D. J.	296
Palmer, Damon	341
Parker, Rebecca J.	227
Parks, Catherine G.	273
Parrish, Jason T.	384
Pataky, Jerald K.	304
Patches, Kelly M.	33, 349
Patzoldt, William J.	288
Pauchard, Anibal	319
Paull, Jeffrey	8
Pearce, Cedric	287
Pedroso, Rafael M.	72, 166
Pelletier, Maurice A.	125
Peltzer, Duane	319
Peng, Yanhui	78
Pepitone, Daniel	375
Perez-Jones, Alejandro	205
Perkins, W. R.	15
Person, Janice	370
Peterson, Mark A.	346
Peterson, Vanelle F.	367
Phillippo, Colin J.	311, 312
Picoli Jr, Gilmar J.	94
Pimpinato, Rodrigo F.	115
Pittmann, Dennis	121
Podolsky, Kristen	336
Polizzotto, Matthew	147
Pollnac, Fredric W.	135, 273
Porpiglia, Peter	288
Post, Angela R.	155, 266
Powell, David K.	66
Powles, Stephen	65, 161, 164, 220, 235, 238, 242, 250
Prasad, P. V.	391
Prasad, Raj R.	321
Prasifka, Patti	21
Preston, Christopher	8, 332, 383, 387
Price, Andrew J.	243
Priego-Capote, Feliciano	9
Prostko, Eric P.	26, 32, 368
Punia, Satbir S.	207

Q

Quijano, Yamil	50
----------------------	----

R

Raatz, Lisa	74
Racelis, Alex E.	188
Rachuy, John S.	303
Raeder, Alan J.	109
Rana, Aman	259
Rana, Neha	217, 284, 293
Rana, Sandeep S.	143, 254
Ranabhat, Nar	224
Rauch, Traci	24
Ray, Jeffery D.	89
Reberg-Horton, S. Chris	111
Reddy, Krishna N.	1, 7, 104
Redlick, Colleen N.	185
Reeb, Bryan	372
Reed, Ralph L.	42
Reed, Thomas	48
Reichard, Sarah	274
Reid, Allan	275
Reiser, Steven	284
Remund, Kirk	352
Renner, Karen A.	63, 66
Renton, Michael	19
Rew, Lisa J.	56, 82, 135, 273, 319, 320, 322
Reynolds, Daniel B.	61, 262, 352
Reynolds, Daniel Z.	34
Riar, Ranjit	25, 299
Richardson, Robert J.	360
Riechers, Dean E.	162, 356
Riley, Eric B.	6, 290
Riley, Spencer A.	365
Ringselle, Björn	124
Rios, Sonia I.	100, 123, 392
Ritten, John P.	193
Riu, Liu	77
Roberts, James	216
Robinson, Darren	181, 182, 183, 305, 307, 337, 385
Robles, Wilfredo	49, 50
Roerig, Kyle C.	301
Rojano, Antonia M.	9, 22
Rojas, Maria Angelica	181
Rollan, Cristina	88
Roseborough, Colleen	105
Roslinsky, Vicky	3
Rubin, Baruch	116, 270

Ryan, Matthew 80, 140, 325, 326, 327,
328, 329, 330, 335

S

Sabate, Sebastian 16
Salamero, Ana 119
Sammons, Doug 106, 167, 284, 384
Samples, Chase 34
Sandbrink, Joseph 261, 352
Sandell, Lowell 221, 293
Sapsford, Ken L. 331
Sartain, Brad 359
Satchivi, Norbert M. 390
Saunders, David 200
Sbatella, Gustavo 229
Schmidt, Naomi 85
Schmitzer, Paul R. 95
Schroeder, Jill 85
Schultz, John 6, 290
Schulz, Burkhard 158
Schumacher, Wayne J. 200
Schutte, Brian J. 67, 92
Scott, Barbara 325, 328
Scott, Jon E. 58, 117, 118
Scott, Lisa 279
Scully, Brian 29, 246
Sebastian, James 244
Seefeldt, Steven 374
Seguin-Swartz, Ginette 3
Seipel, Timothy 82, 273, 320
Sellers, Brent A. 217
Senesac, Andrew F. 171
Senseman, Scott A. 108
Sforza, Rene 53
Shaner, Dale L. 110
Sharma, Bhagwati C. 348, 364
Sharma, Neetu S. 364
Shaw, David 101, 148
Sheaffer, Craig 139
Shirley, Neil 383
Shirriff, Scott 159
Shirliffe, Steve 120, 128, 130, 175, 185, 237, 336
Shivrain, Vinod K. 117
Shrestha, Anil 36, 37, 78, 92, 100, 123, 392
Shropshire, Christy 31
Sibony, Moshe 116, 270

Sikkema, Peter H.	18, 31, 182, 183, 202, 307, 385
Sikoriya, Sunil K.	176
Silva, Jillian	106
Silveira, Maria L.	228
Simard, Marie-Josée	62, 74
Simões, Plinio S.	93
Simpson, David	356
Singh, Samunder	207, 239
Singh, Vijay	160
Sinha, Neelima	134
Skelton, Joshua J.	356
Skibo, Andrew Z.	361, 362
Skurski, Tanya	135
Slack, Charles	5
Slesak, Robert A.	190
Slobinyk, Don F.	125
Smeda, Reid J.	365
Smith, Adam N.	254, 289, 295
Smith, Larissa L.	323
Smith, Nathan B.	20
Smith, Richard G.	140
Smyth, Thomas J.	300
Snow, Allison A.	153, 296
Soltani, Nader	18, 31, 183, 202
Soni, Neeta	228
Soteres, John K.	345, 370
Spandl, Eric	260
Sprague, Christy L.	12, 30, 63, 66, 302, 343
Spring, John F.	77
Stahlman, Phillip W.	229, 251
Steber, Camille M.	98
Steckel, Larry	13, 250, 352
Stepanie, Wedryk	258
Stephenson, IV, Daniel O.	70, 203, 206
Stevens, Jan F.	42
Stevenson-Paulik, Jill	198
Stewart, Neal	78
Stocco, Marina	88
Stottlemeyer, A. L.	296
Streibig, Jens C.	197
Sum, Alan	275
Sun, Susan	263, 264
Suseela, Vidya	324
Swanton, Clarence J.	126, 127, 133, 297, 316
Sytsma, Mark D.	278
Szucs, Marianna	189

T

Tamura, Mioko	136
Tanveer, Asif	231
Tao, Nengbing	167
Tardif, François J.	170, 385, 393
Tarouco, Camila P.	108
Tasker, Alan V.	150
Tautges, Nicole E.	121
Taylor, Kimberley	56, 319
Taylor, Norman	216
Teaster, Neal D.	96
Teitel, Zachary	131
Tekiela, Daniel R.	219, 366
Tenuta, Mario	179, 271
Tharayil, Nishanth	136, 165, 324
Thill, Donn	24
Thomas, Stephen	85
Thomas, Walter E.	61, 262, 288, 353
Thompson, Julia	157
Thomson, Steven J.	1
Tornisielo, Valdemar L.	112, 115
Tranel, Patrick J.	191
Travers, Jeff	261, 352
Trewatha, Pamela B.	71
Troth, John L.	367
Tseng, Te Ming	160
Tubbs, Ronald S.	20
Turkington, T. K.	237, 245
Turnage, Gray	359

U

Ulmasov, Tim	167
Unruh, Bryan	47
Upadhyaya, Mahesh K.	68, 69

V

Vadnais, Maureen	376
Vail, Gordon D.	199, 288
Van Acker, Rene C.	41, 316
Van Eerd, Laura L.	181
Van Horn, Christopher R.	384, 386
VanGessel, Mark J.	325, 326, 327, 328, 329, 330
Vanhorn, Christopher	381
Varanasi, Aruna V.	23, 83, 315

Varanasi, Vijaya Krishna	102
Vargas, Jose J.	146
Vargas, Leandro	108
Vargas, Roger	137
Velini, Edivaldo D.	93, 94
Vencill, William K.	26, 113, 269
Venner, Katelyn A.	143, 145, 254, 255
Vinciguerra, Humberto F.	16
Vink, Stefanie	139
Viti, Marcela L.	112, 115
Vollmer, Kurt M.	294

W

Waddington, Mark	5
Wait, Jimmy D.	290
Walker, Steven R.	236
Walsh, Michael J.	235, 238, 242, 250
Walton, Larry C.	240
Wang, Dafu	106, 284, 384
Ward, Sarah	75
Warkentin, Tom	130
Warwick, Suzanne I.	3
Watson, Alan	84, 132, 285
Wayman, Sandra	35
Webster, Theodore M.	29, 246
Wedryk, Stephanie	260
Weisz, Randy	299
Weller, Stephen C.	158
Werle, Rodrigo	19, 221
Westra, Eric	110, 380, 381
Westra, Philip	75, 106, 229, 380, 381, 384, 386
Westwood, James H.	295
White, Scott N.	316
Widderick, Michael J.	236
Wiersma, Andrew	380, 384
Wiggins, Matthew S.	13
Wilkinson, Brian L.	201
Willenborg, Chris	120, 130, 175, 180, 185, 237, 267
Williams, Alexandra P.	253
Williams, Danielle	43
Williams, David W.	52, 253
Williams II, Martin M.	304
Wilson, Henry P.	294
Wilson, Robert	193, 229
Wilson, Sandra	375
Witt, William	51, 54

Wolf, Robert E.	375
Woolam, Brandi C.	70, 203, 206
Wright, Alice A.	89, 91, 101, 104
Wright, Steve D.	36, 78, 100, 123
Wu, Chenxi S.	191
Wuerffel, R. Joseph	291
Wyse, Don	314

Y

Yadav, Dharam Bir	338
Yeiser, Jimmie L.	209, 211, 212, 213, 215
Yenish, Joseph P.	21
York, Alan C.	156, 208
Young, Bryan	250, 291
Young, Julie	291
Young, Lauren	325, 329
Young, Ned	160
Yu, Jialin	48
Yu, Li	182
Yu, Qin	164
Yun, Young Beom	59

Z

Zamora, Victor	67
Zandstra, Bernard	311, 312
Zemetra, Robert	105
Zhang, Ti	180
Zuluaga, Soledad	88

KEY WORD INDEX

A

- 2,4-D 95, 161, 216, 240, 258, 263,
264, 308, 356
- Abutilon theophrasti* 62
- ACCase inhibitor resistance 252
- Acetochlor 204
- Activated carbon 324
- Adaptation 138, 189
- Adjuvants 258
- Aegilops cylindrica* 224
- AFB5 95
- Agrostis stolonifera* 146
- Ailanthus altissima* 192
- Air induction nozzle 264
- Allelopathy 71, 190
- Alliaria petiolata* 192
- Almond 36
- ALS 108
- Alternative herbicides 169
- Amaranthus arenicola* 379
- Amaranthus palmeri* 14, 43, 65, 66, 100, 156, 220,
240, 300, 379
- Amaranthus powellii* 66, 379, 393
- Amaranthus retroflexus* 62, 68, 393
- Amaranthus rudis* 377
- Amaranthus spinosus* 379
- Amaranthus tuberculatus* 377, 379
- Ambrosia artemisiifolia* 62, 84, 317
- Ambrosia trifida* 158, 377, 385, 386
- Aminocyclopyrachlor 51, 211, 213, 215
- Aminopyralid 50, 51, 190, 367
- Amur honeysuckle 365
- Application timing 33, 305
- Application, basal bark 125
- Application, methods 258
- Aquatic environment 367
- Arabidopsis thaliana* 95, 153
- Arachis hypogaea* 20, 298
- Areas, natural 56, 367, 379
- Artemisia* 76
- Arundo donax* 150
- Atrazine 29, 304, 377
- Avena fatua* 141, 163

B

Barley	224, 237, 331, 336
Bean, dry	193
Bentazon	304
<i>Beta vulgaris</i>	29, 193, 246
<i>Bignonia capreolata</i>	215
Bio-herbicides	169
Biochar	324
Biodiversity	317, 319
Bioherbicide	286
Bioinformatics	158
Biological control	87, 88, 265
Biological control agents	88, 189
Biology, weed	70, 224, 316, 365
Biotechnology	156
Blade roller	336
Blueberry, wild	316
Bluegrass, Kentucky	143, 254
<i>Brassica carinata</i>	3
<i>Brassica juncea</i>	3
<i>Brassica napus</i>	3, 26, 331
Breeding	216
Broccoli	308
<i>Bromus tectorum</i>	56, 224, 244, 265, 319

C

Canola	26, 237, 331
Cereal rye	328
<i>Chenopodium album</i>	69
Chlorimuron-ethyl	29
Chloroacetamides	162
<i>Cirsium arvense</i>	331
Climate change	136, 319
Clomazone	26
Clopyralid	331
Clover	216
Coleoptile	162
<i>Commelina erecta</i>	88
Competition	140, 296
Conservation, forest	319
Contemporary evolution	189
<i>Conyza bonariensis</i>	36, 78
<i>Conyza canadensis</i>	36, 71, 78, 153, 377
Corn	71, 111, 193, 240, 300, 328, 330, 349, 371, 377

Corn, sweet	304, 334
Correlation	376
Cotton	14, 156, 240, 243, 371, 379
Cover crop	38, 179, 328, 330, 334, 336
Cowpea	80
Crop cultivar	305
Crop diversity	301
Crop rotation	252, 331
Crop wild relative	379
<i>Cucurbita</i> spp.	38
Cultivation	298
<i>Cuscuta pentagona</i>	134
<i>Cynodon dactylon</i>	143
<i>Cyperus difformis</i>	166
<i>Cytisus scoparius</i>	190
Cytochrome P450	304

D

Decision support tool	65
Dicamba	14, 240, 251, 263, 308, 351
Dicamba tolerant soybeans	351
Dicamba-glufosinate tolerant cotton	351
<i>Dichrostachys cinerea</i>	122
Diclofop-methyl	164
Diclosulam	29
<i>Digitaria sanguinalis</i>	300
Dimethenamid-P	162, 181
Disease ecology	224
Dispersal	76
Diuron	115, 122
DNA profile	162
DNA sequencing	86
Dormancy, seed	229
Drift control	258, 263, 264
Drift Reduction Technology	258
Drift, spray	264, 308
Drought tolerance	297

E

<i>Echinochloa crus-galli</i>	62
Ecology, weed	140, 224, 316, 317, 319
Economics	36
Emergence, weed	84, 229
Ensiling	62
Environment	68

Environmental stress	297
Enzyme activity	108
EPSPs	93, 94, 153
<i>Erigeron canadensis</i>	240
<i>Eriochloa villosa</i>	62
Evolution	78, 138
Evolution of herbicide resistance	153
Evolutionary genetics	156, 379
Exotic weed	86, 136, 219
Extension	371

F

Fairway, golf course	254
Fall seeded cover crops	181
<i>Fallopia japonica</i>	275
<i>Fallopia sachalinensis</i>	275
Fenoxaprop	141, 163
Fir, Douglas	190
Fire	56, 192
Fitness	153
Flax	179, 301
Flumioxazin	43
Fluxofenim	162
Fomesafen	43
Forest	190, 192, 275, 319
Fruit drop	365
Fungal pathogen	265

G

Gene expression	162
Gene flow	3, 138
Genetic analysis	156
Genetic diversity	86, 156
Genetically modified crops	153, 232
Genotyping by sequencing	86, 188
Geographic information system (GIS)	376
Glufosinate	14, 201, 203, 240, 243, 392
<i>Glycine max</i>	51, 71, 156, 203, 204, 206, 240, 328, 349, 356, 377, 379
Glyphosate	14, 33, 66, 78, 153, 156, 158, 159, 165, 240, 251, 258, 263, 264, 331, 377, 379, 385, 386, 392
Glyphosate resistance	78, 100, 103, 153, 156, 385
<i>Gossypium hirsutum</i>	14, 156, 240, 243, 379
Grapes	36, 37

Groundcovers 84

H

Habitats, disturbed 141, 156, 163, 224,
233, 275, 317
Habitats, natural 49, 136, 365, 379
Habitats, semi-natural 134, 136, 379
Hairy vetch 328
Harvesting 192
Heavy metals 84
Helianthus annuus 110
Herbicide carryover 29
Herbicide fate 216
Herbicide metabolism . 115, 161, 162, 164, 216, 286, 356
Herbicide mode of action 93, 110, 162, 286
Herbicide resistance 65, 78, 86, 95, 103, 141, 153,
159, 163, 164, 165, 166, 185, 193, 216,
220, 232, 252, 371, 377, 386, 393
Herbicide safeners 162
Herbicide symptomology 206
Herbicide-resistant crops 232
Heterosis 189
Hexazinone 115
Hordeum vulgare 224, 331, 336
Hybridization 189
Hyperspectral 1

I

Ilex vomitoria 213
Imazamethabenz 141, 163
Imazamox 331
Imazapic 20, 29, 244
Imazethapyr 181, 331, 377
Imperata cylindrica 86, 188
Integrated weed management 38, 65, 185, 220, 232,
237, 243, 252, 338, 339
Interactions, herbicide 339
Interspecific hybridization 3
Invasive species 49, 86, 136, 190, 275, 319, 365
Ipomoea batatas 43
Isoxafutole 201

K

Kochia scoparia 159, 193, 226, 229

L

Lactofen	377
<i>Lamium amplexicaule</i>	70
LC-MS/MS	93
Lentil	185
Lettuce	303
Light intensity	68
Light quality	192
Light quantity	192
<i>Linum usitatissimum</i>	301
Linuron	43, 393
Liquid scintillation spectrometry	112
<i>Lolium multiflorum</i>	103
<i>Lolium rigidum</i>	164
<i>Lonicera japonica</i>	215
<i>Lonicera maackii</i>	365
<i>Lycopersicon esculentum</i>	134

M

Marestail	153
MCPA	331
Mechanical control	37
Mesotrione	181, 201, 286, 304, 377
Methiozolin	254
Metribuzin	115, 122, 393
Metsulfuron	50
MGI Herbicide-Tolerant Soybeans	201
<i>Microstegium vimineum</i> var. <i>imberbe</i>	192
Mid-Atlantic	327
Millet	80
<i>Mimosa pigra</i>	50
Mini-silos	62
<i>Miscanthus sinensis</i>	219
Mitigation	190
Mode of action	94
Modified cellulose ether	264
Molecular evolution	379
Monitoring	376
Mulch	179
Mycorrhizal fungi	140

N

National historic sites	122
<i>Nicotiana tabacum</i>	51

No-tillage	179, 232, 349
Non-chemical weed control	179
Non-crop	70, 159, 219, 365, 379

O

Organic agriculture	179, 298, 327, 330
Organic crops	336
Organic matter	136
Organic rotational no-till	179
<i>Oryza sativa</i>	153, 166, 198, 233
Oxadiazon	233
Oxyfluorfen	103, 240

P

Palmer amaranth	65, 220
<i>Panicum texanum</i>	14
<i>Panicum virgatum</i>	296
Paraquat	141
Parasitic weed	134
Pastures	51
Pea	305
Pea, dry	331, 336
Peanut	20, 298
Pendimethalin	122, 303
<i>Pennisetum purpureum</i>	150
Pepper, bell	308
Perennial Biofuel Crops	296
Perennial weeds	316
Persistence	112
Pesticide bans	169
<i>Phaseolus vulgaris</i>	193
Phenology	316, 317
Phenylalanine	94
Phylogeny	379
<i>Phytolacca americana</i>	33, 349
Picloram	51, 95
Pinoxaden	141, 146, 163
<i>Pinus contorta</i>	319
Pistachio	36
<i>Pisum sativum</i>	305, 331, 336
Plant density	69
Plant invasion	324
<i>Poa pratensis</i>	143, 254
Pollution	112
<i>Polygonum cuspidatum</i>	136, 324

Polymer	264
Population genetics	78, 156
Positive feedback	56
Pre-emergent	112
Prescribed burning	244
Preserves, forest	319
Prevention	190
Propanil	166
<i>Pseudotsuga menzesii</i>	190
Public lands	192
<i>Pueraria montana</i> var. <i>lobata</i>	136
Pyraflufen	392
<i>Pyrenophora smeniperda</i>	265
Pyriithiobac sodium	29
Pyroxasulfone	20, 43, 110, 206

Q

<i>Quercus falcata</i>	211, 213
<i>Quercus stellata</i>	211, 213
Questionnaire	376

R

Radioactivity	112, 115
Rangeland	49, 50, 56, 244, 319, 367
<i>Raphanus raphanistrum</i>	161
Rapid necrosis	386
Reduced tillage	327
Residues, herbicide	115
Resistance spread	78
<i>Rhamnus cathartica</i>	125
Rice	166, 198, 233, 338, 339
Riparian areas	367
Risk assessment	150, 296
RNA-Seq	164
Roadsides	84, 275, 365
Row spacing	233
<i>Rumex acetosella</i>	316
Rye	330
Ryegrass	108

S

s-metolachlor	43, 162
<i>Saccharum officinarum</i>	122
Safeners	146

Saflufenacil	181, 305, 392
Sagebrush steppe	56
Seed biology	76
Seed viability	62
Seedbank	229, 275
Seedbank management	65, 220
Selection	216
Selectivity, herbicide	26
Shifts, weed population	68, 69
Shikimate	93
Simulation model	220
Size hierarchy	68, 69
<i>Smilax bona-nox</i>	215
Soil carbon	136
Soil enzyme	324
Soil persistence	51
Sorghum	162, 200
<i>Sorghum halepense</i>	87, 203
Sorghum sudangrass	80
<i>Sorghum vulgare</i>	162
Soybean	1, 71, 156, 204, 206, 240, 328, 330, 349, 356, 371, 377
Soybean, glufosinate-resistant	203
Soybean, glyphosate-resistant	156, 379
Spaghetti squash	38
Spatial dynamics	219
Spring seeded cover crops	181
Stable isotopes	140
Stewardship, product	200
Sugar beet	29, 193, 246
Sugar cane	122
Sunflower	110
Sun hemp	80
Surfactant	263
Survey	159
Survey, weed	376
Sweet corn	38
Switchgrass	296

T

Tankmixtures	304
Tansy ragwort	189
Tebuthiuron	244
Tembotrione	304
Temperature effect	317
Tillage, reduced	334

Topramezone	143, 304
Transcriptome	158
Transcriptomics	164
Transplants	303
Triallate	141, 163
Triclopyr	51, 95, 125, 190
<i>Trifolium repens</i>	51
<i>Trifolium</i> spp.	216
Triticale	328
<i>Triticum aestivum</i>	20, 193, 224, 328, 331, 336
Tryptophan	94
Turfgrass	143, 146, 169, 254, 371
Turfgrass management	143, 254
Tyrosine	94

V

<i>Vaccinium angustifolium</i>	316
Varietal sensitivity	254
Vegetables	43, 303
Vesicle	263
Vineyard	100
<i>Vitis vinifera</i>	37

W

Weed biology	316
Weed competition	128, 237
Weed control systems	38, 198
Weed control timing	297
Weed distribution maps	376
Weed establishment	84
Weed management	62, 143, 156, 198, 201, 233, 237, 240, 376, 377
Weed pathogens	87
Wetlands	367
Wheat	20, 193, 224, 237, 328, 330, 331, 336, 371

Z

<i>Zea mays</i>	38, 62, 71, 111, 193, 240, 300, 304, 328, 349, 377
-----------------------	---

2012-2013

WSSA Board of Directors

President: James Kells (2013), Michigan State Univ., 286 Plant and Soil Sciences Bldg., East Lansing, MI 48824

President-Elect: Joe DiTomaso (2013), UC Davis, Robbins Hall, Davis, CA 95616

Vice-President: Dallas Peterson (2013), Kansas State University, 2014 Throckmorton Hall, Manhattan, KS 66506

Past-President: Rodney Lym (2013), North Dakota State Univ., PO Box 6050, Fargo, ND 58108

Secretary: John Madsen (2013), Mississippi State Univ., Geosystems Research Institute, Box 9627, Mississippi State, MS 39762

Treasurer: Ian Burke (2014), Washington State Univ., Dept. of Crop and Soil Sciences, PO Box 646420, Pullman, WA 99164

Director of Publications: James Anderson (2013), USDA, ARS, 1605 Albrecht Blvd., Fargo, ND 58105.

Constitution and Operating Procedures: Peter Porpiglia, 4695 MacArthur Ct., Ste. 1250, Newport Beach, CA 92660

Member-at-Large: Les Glasgow (2015), Syngenta Crop Protection, 410 Swing Rd., Greensboro, NC 27419

Member-at-Large: Dan Kunkel (2016), IR-4 Program, Rutgers University, 500 College Rd E Ste 201, Princeton, NJ 08540

Member-at-Large: Andrew Kniss (2017), University of Wyoming, 1000 E University Ave., Laramie, WY 82071

Director of Science Policy: Lee Van Wychen, Weed Science Society of America, 5720 Glenmullen Pl., Alexandria, VA 22303

Graduate Student Representative: Alexandra Knight (2013), North Carolina State University, Raleigh, NC 27603

Aquatic Plant Management Society: Cody Gray (2016), United Phosphorus Inc., 11417 Cranston Drive, Peyton, CO 80831

CWSS/SCM: Hugh Beckie (2016), Agri & Agri-Food Canada, 107 Science Place, Saskatoon, SK S7N 0X2, Canada

NCWSS Representative: Mark Bernards (2015), Western Illinois University School Of Agriculture, Knoblauch Hall 227, 1 University Circle, Macomb, IL 61455

NEWSS Representative: Jacob Barney (2014), Virginia Tech, 435 Old Glade Rd, Blacksburg, VA 24061

SWSS Representative: Darren Dodds (2014), Mississippi State Univ., 117 Dorman Hall, Mississippi State, MS 39762

WSWS Representative: Pat Clay (2015), 37860 W. Smith Enke Rd, Maricopa, AZ 85238

Executive Secretary: Joyce Lancaster, Allen Press, Inc., 810 East 10th Street, Lawrence, KS 66044-7050

CWSS-SCM Board of Directors

Past-President: Bill Summers, E.I. DuPont Canada Company, 7070 Mississauga Road, Mississauga ON L5N 5M8

President: David Clements, Trinity Western University, 7600 Glover Rd., Langley BC V2Y 1Y1

1st Vice-President: Hugh Beckie, Agriculture and Agri-Food Canada, 107 Science Place, Saskatoon SK S7N 0X2

2nd Vice-President: Eric Johnson, Agriculture and Agri-Food Canada, PO Box 10, Scott SK S0K 4A0

Treasurer: Darren Robinson, University of Guelph Ridgetown Campus, Ridgetown ON N0P 2C0

Secretary: Jeff Bertholet, BASF Canada, 1-411 Downey Road, Saskatoon SK S7N 4L8

Regulatory Representative: Wendy Asbil, Plant Health and Biosecurity Directorate, Canadian Food Inspection Agency, 59 Camelot Dr., Ottawa ON K1A 0K9

Regulatory Representative: Michael Downs, Herbicides and Plant Growth Regulators Efficacy and Sustainability Assessment Division, Pest Management Regulatory Agency, 2720 Riverside Drive, Ottawa ON K1A 0K9

Publications Director: Stephen Darbyshire, Eastern Cereal and Oilseed Research Centre, Agriculture and Agri-Food Canada, 960 Carling Avenue, Ottawa ON K1A 0C6

Research Representative: Chris Willenborg, Dept. Plant Sciences, University of Saskatchewan, 51 Campus Drive, Saskatoon SK S7N 5A8

Croplife Canada Representative (East): Greg Wilson, Syngenta Canada Inc., 946863 Twp. Rd. 14, Plattsville ON N0J 1S0

Croplife Canada Representative (West): David Forster, Syngenta Crop Protection, #8-4003 Millar Ave, Saskatoon SK S7K 2K6

Provincial Extension Representative: Gavin Graham, NB Department of Agriculture and Aquaculture, Box 6000, Fredericton NB E3B 5H1

Member-At-Large (East): Allan Kaastra, Bayer CropScience, 5431 4th Line Eramosa, RR #3, Rockwood ON N0B 2K0

Member-At-Large (West): Ken Sapsford, University of Saskatchewan, 51 Campus Dr, Saskatoon SK S7N 5A8

Graduate Student Representative: Scott White, University of Guelph, Guelph ON N1G 2W1

Local Arrangements Chair (2014 Feb): Victoria Brookes, Agriculture and Agri-Food Canada, 6947 #7 Highway, Agassiz BC V0M 1A0

PERSONAL TIME SCHEDULE

Time	Monday	Tuesday	Wednesday	Thursday	
6:00					
6:15					
6:30				CWSS/ SCM Business Meeting Breakfast	
6:45					
7:00					
7:15					
7:30					
7:45					
8:00		Poster Session Even Numbers	Poster Session Odd Numbers		
8:15					
8:30					
8:45					
9:00					
9:15					
9:30					
9:45					
10:00					
10:15					
10:30					
10:45					
11:00					
11:15					
11:30					
11:45					
Noon		Grad Student Luncheon	CWSS/SCM Awards Luncheon		
1:00					
1:15					
1:30					
1:45					
2:00					
2:15					
2:30					
2:45					
3:00					
3:15					
3:30					
3:45					
4:00	WSSA/ CWSS- SCM General Session				
4:15					
4:30					
4:45					
5:00		WSSA Business Meeting			
5:15					
5:30					
5:45					
6:00	All attendee Reception				
6:45					
7:00			CWSS/ SCM Industry Reception		
7:15					
7:30					
7:45					
8:00					
8:15					
8:30					
8:45					
9:00					

NOTES

NOTES

NOTES

NOTES