



WSSA

WEED SCIENCE SOCIETY OF AMERICA

Volume 39, No. 1
January, 2011

Newsletter



PRESIDENT'S MESSAGE

I hope to see all of you at our upcoming 2011 National Meeting on February 7–10, 2011 in Portland, Oregon at the Hilton Portland & Executive Tower Hotel. This will be the first truly traditional National meeting we've had in a while and our Program Chair, Mike Barrett, and Program Vice-Chair, Rod Lym, have worked hard to provide a program where Weed Scientists will have the opportunity to present and share their latest research

results, expand their awareness of critical emerging issues, network to identify new solutions in weed management and enjoy the fellowship of our Society. Our Local Arrangements Committee, led by Carol Mallory-Smith and Tim Miller, has done a wonderful job working with the venue so that this meeting meets all our expectations.

It's been a great year for Weed Science and we made much progress on all of our objectives. The Society's current goals were originally envision back in 2006 with the *Declaration of the WSSA 2010*, a key element in the Board of Directors strategic planning. Since you may not have seen that document or be aware of the effort the Board puts into planning, I thought I would provide you with that text here:

Declaration of the WSSA 2010

By 2010 WSSA will be a visible and recognized force in the public and in the national debate over concerns of ecosystems management and sustainable practices in plant management. WSSA members routinely participate in and are called on to shape relevant public policy. WSSA will have influence in all of the Americas.

By 2010 WSSA will have:

- *Created a powerful and highly utilized web site for researchers, land managers (agricultural, forestry etc.) and educators at all levels to further Weed Science research, best practice adoption and education*
- *Started a new journal on Invasive Species, or adapted an existing journal to also cover this area*

CONTINUED on pg 2 >>>

VIP RECEPTION
PLANNED
(details inside on page 5)

IN THIS ISSUE

| | | | | | |
|-------------------------------|---|------------------------------|---|-------------------------------|----|
| VIP Reception Plans | 4 | People In the News | 6 | Important Addresses | 9 |
| Conference News | 5 | Necrology | 7 | Calendar of Events | 10 |

PRESIDENT'S MESSAGE CONTINUED from pg 1

- Expanded journal abstracts to include a functional Spanish translation for highest impact in the Americas
- Been and continued to be sought after by the popular press for expert opinion on invasive species and the impact weeds in the natural world
- Established strong relationships with Federal Agencies and other policy creators, with members routinely sought to sit on panels for public policy and oversight
- Collaborated with the Regional Societies to meet their needs and have maximum impact for Weed Science
- Significantly increased its membership and annual meeting attendance (both total and proportion of membership) by focusing on diversity and youth

Our community of committed scientists provides a unique strength to WSSA and allows us to offer critical services to researchers and educators including a high quality website and professional journals. We are distinguished in the quality of our dedicated paid staff and support their professional growth. We have direct links to the critical arms of government, legislators and policy makers in order to help influence the creation of laws, standards and policies. WSSA provides direct benefit to the Regional Societies and membership through its professional meetings, publications and its influence and impact on the laws and regulations we all live under.

WSSA can best achieve this by: knowing our membership better (their needs and focus), developing stronger relationships with politicians and the general media, understanding how to reach primary and secondary educators and students, and developing research for meeting 21st century challenges and expanding our experience and expertise to the developing regions of the Americas.

WSSA believes that Weed Science in general and Invasive Species in particular will continue to grow in importance to the public, nation and the Americas. WSSA has the ability to identify and help place the appropriate scientists with the agencies that review and set policy. WSSA believes that primary and secondary educators will be interested in and promote educational modules that help to teach Weed Science to children. This, in turn, will help lay the foundation for increased enrollment in Higher Education as well as improved public understanding of the impact of Weed Science on everyday life.

As 2010 comes to a close, we don't have to look far to see how we've done against our stated goals. Our website is greatly improved and much more useful with direct links to our journals as well as "Headline" messages to highlighting our key public policy actions and the output of our public awareness committee. We're not done improving this website by any means and, soon, our website will be the go-to location for Herbicide Resistance Management information and training tools as well as other additions. We did start a new journal in Invasive Plant Science and Management and this new venture has been highly successful; Allen Press believes that this has been one of the best new journal launches they've seen. We did develop our journal, *Weed Technology*, to include Spanish abstracts and have largely worked out the difficulties in translation; as we approach a world with nine billion inhabitants, we will continue to seek expanded impact across the Americas. WSSA has become routinely sought out for our advise on critical topics like spray drift, herbicide resistance and NPDES Permits and we have gained ground through our Science Policy Director, Lee VanWychen, our EPA Subject Matter Expert Jill Schroeder (NM State University), and our incredibly effective Public Awareness Committee (capably lead by Carol Somody and Janis McFarland at Syngenta). Please note that our last twelve press releases had confirmed full page reads ranging from 997 to 2505 each, with headline impres-

CONTINUED on pg 3 ➤➤

WSSA FUTURE MEETING SITES AND DATES

2011

**Hilton Portland and
Executive Tower Hotel
Portland, Oregon
February 7-10, 2011**

**51st Annual Meeting
Program Chair: Mike Barrett
Program Vice-Chair: Rod Lym
For more information:
www.wssa.net**

**WSSA HOME PAGE
ACCESSED AT:
www.wssa.net**

**THINK NEWSLETTER
Deadline for April issue
March 1, 2011**

WSSA NEWSLETTER

VOL. 39, NO. 1

JANUARY, 2011

Published quarterly by the Weed Science Society of America. Subscription included in the annual dues paid by members of the Society. Address correspondence and information to:

**Dr. Clifford Koger (Trey), Editor
WSSA NEWSLETTER
Delta Research and Extension Center
Mississippi State University
P. O. Box 197
Stoneville, MS 38776
trey.koger@syngenta.com
(662) 686-3238 Office
(662) 686-7336 Fax**

sions on the Web ranging as high as 176,349. We have developed effective relationships with the Federal Agencies, especially EPA where our WSSA Subject Matter Expert is involved in critical policy discussions that have potential for National impact. Further, we now have Subject Matter Experts along the WSSA model from the Entomological Society of America and the American Phytopathological Society to collaborate with for greater impact; further, we have collaborated with those organizations on issues that have broad impact on agriculture. While we still have some ground to gain, we have increased collaboration with the Regional Societies, holding a joint meeting with the SWSS in 2009 and more recently, on 2010 policy initiatives regarding NIFA and NPDES permits; we're now in the planning stages of a joint WSSA meeting with the NEWSS in 2013. We are still working on that last goal of increasing membership, but the first step in that process is to become a more cohesive society that has impact and because of that, attracts new members willing to contribute; we're doing pretty well with that.

Not to sit on our laurels, we have just created a new vision and set of goals for 2015 that moves us further down the path we've effectively established:

Declaration of the WSSA 2015

The WSSA believes that Weed Science is critical to the ability of a society to grow food and feed itself, renew and restore its lands, manage its forests and rangelands and deal with the impact of climate change. The WSSA is a unifying force bringing together the science and practice of plant management into the appropriate level of governmental and public policy to ensure that, as a society, we make informed decisions and investments in research, education and outreach.

As of 2015, the WSSA is the pri-

mary scientific authority and voice for issues regarding sustainable plant management across ecosystems in the US and supports the science globally. The WSSA is a dynamic, inclusive and growing professional body, providing resources, connections and a home for plant management professionals and practitioners. The WSSA members participate in and are called upon to shape relevant public policy and contribute to international dialogue on plant management.

By 2015, the WSSA will have:

- *Expanded its membership base by attracting younger members across a more diverse spectrum of disciplines.*
- *Expand the use of our science throughout the Americas*
- *Partnered with other organizations and affiliates to strengthen the impact of its collective voice.*
- *Helped to increase funding resources for Weed Science in critical areas of public relevance such as herbicide resistance, climate change and integrated weed management.*
- *Established strong relationships with Federal Agencies, with members routinely sought to sit on panels for public policy and oversight.*
- *Raised public awareness of the contribution and impact of Weed Science in managing land.*
- *Become the central source linking to local expertise and resources.*

Our community of committed practitioners, students and scientists provides a unique strength to the WSSA which allows us to speak with a strong voice and influence plant management policy. We seek to represent all those engaged in plant management. We have direct links to the critical arms of government, legislators and policy makers involved in the creation of laws, standards and policies. The WSSA provides direct benefits to the Regional Societies and membership through its professional meetings, publications and its influence and impact on the laws and regulations.

The WSSA will achieve its 2015 goals:

- *By diversifying and enlarging the membership, reaching out to practicing weed managers and the professional community dealing with invasive plants;*
- *Through partnerships with affiliates and international weed science Societies;*
- *By enhancing our web site and communications, and increasing outreach into the general public;*
- *By diversifying income streams.*
- *By making the results of all our journals available as Spanish abstracts*

Any applied scientific society moves forward primarily through its commitment to a public service vision. WSSA has created this vision and made real progress in its mission by creating a forum that brings scientists, practitioners, policy makers, industry, students and land stewards together to advance Weed Science. In fulfilling our mission, we have effectively created the right opportunities to engage academia, land managers, policy makers, weed management practitioners and industry in bringing ideas and people together solve some of society's pressing problems and to promote weed management policy based in science. I have very much enjoyed my term as President and am both proud and grateful for this opportunity to serve.

In your service,
John Jachetta, Ph.D.
jjjachetta@dow.com

WSSA ANNUAL MEETING

February 7–10, 2011

Hilton Portland and Executive Tower Hotel
Portland, Oregon

THE FULL PROGRAM OF THE UPCOMING ANNUAL MEETING
CAN BE FOUND AT
www.wssa.net

*A pdf of the full meeting program for the 2011 annual meeting is now available
on the WSSA website's 2011 Meeting Page.*

*If you want to find the schedule for a particular presentation and you know the name of the author,
the easiest method is to find the presentation number in the Author Index.
The program is arranged sequentially by number.*

As President of the Weed Science Society of America, it is my pleasure to invite you to a VIP Reception during the 2011 National Conference in recognition of your substantial contribution to the Society and Weed Science. I am inviting all past WSSA presidents, current members of the WSSA Board of Directors, WSSA committee chairs, as well as all WSSA Fellows to this event. Your spouses are also welcome to attend. The reception will be held on Tuesday, February 8th, in the Alexanders reception room on the Portland Hilton's 23rd floor between 5:00 and 6:00 p.m. and will feature light hors d'oeuvres and a hosted bar. As announced in our spring Newsletter, the Society's emeritus members and Retired Fellows no longer need to pay registration fees for the meeting, though both sets of members still need to submit a registration form, either online or by mailing in a printed document. Please RSVP to Joyce Lancaster as soon as possible as to whether you will be able to attend the reception.

Thanks, and look forward to seeing you!

*John Jachetta, President
Weed Science Society of America*

6th World Congress on Allelopathy

The 6th World Congress on Allelopathy will be held in Guangzhou, China from December 15 to 19, 2011. The World Congress of Allelopathy (WCA) is a formal academic conference organized by the International Allelopathy Society every three years. Recent trends in sustainable development and advances in research methodology have helped to make allelopathy a rapidly growing research field throughout the world. The 6th WCA will provide an excellent opportunity for exchanges between those who are interested in allelopathy.

The city of Guangzhou is the southern gate of China with a subtropical climate. Because beautiful flowers can be grown year round in Guangzhou, it is called the “Flower City.” You are warmly welcomed by your hosts in Guangzhou!

For more information go to:

<http://www.international-allelopathy-society.org/main/WCA/index.html>

The first circular is at:

<http://www.international-allelopathy-society.org/main/WCA/WCA.pdf>

Climate Change and the Implications for Plant Science

The Science, The Impacts and The Options

A 2-day symposium, held June 7–8, 2011, to explore the latest science around climate change, its impact on agriculture and strategies that will allow the agriculture industry to provide leadership and solutions to this important issue.

For more information, visit the website:
www.plantscience.open.uoguelph.ca

Contact info@open.uoguelph.ca
or 519-767-5000

23rd Asian-Pacific Weed Science Society Conference

The 23rd Asian-Pacific Weed Science Society (APWSS) Conference will be held at the Sebel Cairns in North Queensland from 25–30 September 2011. The Conference is proudly supported by the Weed Society of Queensland (WSQ), the Council of Australian Weed Societies (CAWS) and the Asian-Pacific Weed Science Society (APWSS). The conference returns to Australia after an 18 year absence and will focus on the theme “Weed Management in a Changing World.”

There will be presentations on the role of genetically modified organisms in weed management, climate change, water availability, biosecurity, population growth and the utilization of weeds. Six invited speakers have been secured so far representing six Asia Pacific countries. The Conference will provide a forum in which results can be shared, information disseminated to agricultural researchers and cooperation encouraged. Field trips will be organized to demonstrate weed issues affecting North Queensland and activities undertaken to reduce their impact. These will be selected based on their applicability throughout the Asia Pacific region.

There will be ample time available for networking and discussions during breaks in the program and through a social program incorporating a Welcome reception, Conference dinner and Field Trips. An online call for abstract submissions goes live in October 2010. For more information, for a sponsorship kit or to register at a discounted rate please visit the website www.apwss2011.com before October 8th.

In coming emails I would like to discuss with you a number of issues such as the very important matter of selection of the venue for the 24th APWSS conference in 2013, an action that could not be taken in Lahore due to the fact that a quorum could not be raised at the AGM.

Steve Adkins, President, APWSS

Arnold Appleby Inducted Into College of Agricultural Sciences Hall of Fame

Arnold Appleby, Professor Emeritus at Oregon State University, has been inducted into the College of Agricultural Sciences Hall of Fame. This is the highest honor the College bestows, and recognizes men and women who have had an enduring influence on the welfare of Oregon's agriculture. Appleby is the first on-campus faculty member in the 30-year history of the Hall to be inducted.



THE FULL PROGRAM OF THE
UPCOMING ANNUAL MEETING
CAN BE FOUND AT
www.wssa.net

SEND NEWSLETTER MATERIAL TO:

Dr. Clifford Koger (Trey)
Editor, WSSA Newsletter
Delta Research
and Extension Center
Mississippi State University
P. O. Box 197
Stoneville, MS 38776
trey.koger@syngenta.com
(662) 686-3238 Office
(662) 686-7336 Fax

THINK NEWSLETTER
Deadline for April issue
March 1, 2011

WSSA Contacts at Allen Press, Inc.

For All Contacts:

Phone: (800) 627-1326, (785) 843-1234 • Fax: (785) 843-1274

Joyce Lancaster, Executive Secretary

Ext. 250; E-mail: jlancaster@allenpress.com

Regarding: Society reimbursements, committee activities, membership reports, list rental requests

Rusty Wright, Association Manager

Ext. 215; E-mail: rwright@allenpress.com

Regarding: Membership payments, orders, address changes, claims, author billing

Kate Counter, Meeting Manager

Ext. 225; E-mail: kcounter@allenpress.com

Regarding: WSSA annual meeting

Tracy Candelaria, Managing Editor

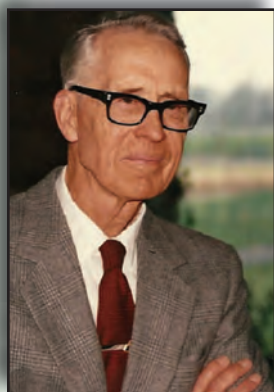
E-mail: tcandelaria@allenpress.com

Regarding: Reviewer questions



NECROLOGY

LAUREL E. ANDERSON **1916–2010**



Laurel E. Anderson, 94, of Columbia, Missouri, passed away on November 24, 2010. He was born May 17, 1916 in Upsala, Minnesota to Carl and Otelia Ryberg Anderson. He was married on April 30, 1949 in Moorhead, Minnesota to Dorothy Fobes. Laurel served in the U.S. Army from 1941–1945 during World War II and was stationed in Ireland, Africa and Italy. He held an associate degree from St. Cloud Teachers College (1936), and B.S. (1947), M.S. (1953), and Ph.D. (1955) degrees in agriculture from the University of Minnesota. He taught in one-room schools in Minnesota from 1937–1940 and at the Morris (Minnesota) School of Agriculture from 1946–1949. He then held a faculty position at Kansas State University from 1953–1965, teaching and conducting research in weed control.

In 1965, he was appointed extension professor of field crops in the Department of Field Crops (later Department of Agronomy) at the University of Missouri responsible for providing guidance to area agronomists and farmers on weed management practices. Because many commercial herbicides were being rapidly developed and becoming available on the market, Laurel was charged with updating area agronomists on herbicide use, coordinating training programs for certification of commercial pesticide application, and preparing appropriate extension publications for use by the agricultural community. He retired from the University of Missouri in 1985.

Laurel developed a highly comprehensive extension weed management program that was readily accepted by the extension agents and farmers of Missouri. He was well liked by colleagues, friends, and farmers. He was an active member of the Weed Science Society of America and the North Central Weed Science Society. He was recognized for his important contributions to weed science with the Outstanding Extension Award from the Weed Science Society of America in 1975, which included a trip to Ciba-Geigy's research facilities in Switzerland.

Laurel is survived by his wife of 61 years, Dorothy, and by three children, eight grandchildren and three great-grandchildren. Memorial services were held on December 5, 2010 at First Presbyterian Church followed by inurnment at Memorial Park Cemetery in Columbia, Missouri.

Laurel Anderson was a kind and gentle man and a respected weed scientist. He will be missed.





NECROLOGY

ELROY J. “Pete” PETERSON 1922–2010

Elroy (Pete) Peters passed away in Columbia, Missouri on December 13, 2010 at the age of 88. He was born in Kaukauna, Wisconsin on June 10, 1922. Pete served during World War II as a member of the 457th Bomber Group, 8th Army Air Corps. He undertook studies in agriculture at the University of Wisconsin and received a B.S. in agriculture (1952), M.S. in agronomy (1953), and doctorate in 1956, one of the first degrees awarded in weed science.

In 1956, he began his career as a research agronomist with the U. S. Department of Agriculture – Agricultural Research Service in the Crop Production Research Unit at Columbia, Missouri. He was Research Leader of the Unit at the time of his retirement in 1985. He was also an adjunct professor of weed science in the Department of Agronomy at the University of Missouri and mentored several graduate students. He was involved in developing “Advanced Weed Science” in 1983, one of the few graduate-level weed science courses offered in the U.S.

During his career Pete conducted pioneering research primarily aimed at improved management of perennial weeds in pastures, forages, and small grain crops. He identified allelopathic agents in tall fescue and invented a roller-applicator for herbicide application to weeds that reduced environmental inputs and economic costs.

Pete was highly respected by the agricultural community and admired by fellow agronomists and weed scientists. He became an active member of the Weed Science Society of America and the North Central Weed Control Conference (forerunner of the North Central Weed Science Society) during the formative years of those organizations. His valuable contributions to weed science were recognized by his election as an Honorary Member (Fellow) of the North Central Weed Science Society in 1986.

Pete was married to Kathryn Ann Cybulski on June 27, 1953 who preceded him in death in 1999. On October 21, 2000, he was married to Dorothy Gabler Stoerker, and she survives. He is also survived by three children and five grandchildren. Funeral services were held on December 21, 2010 at Trinity Lutheran Church followed by burial at Memorial Park Cemetery in Columbia, Missouri.



IMPORTANT ADDRESSES

PRESIDENT

John J. Jachetta
DowAgro Sciences Bldg 308 2E/05
9330 Zionsville Road
Indianapolis, IN 46268
Telephone: (317) 337-4686
Fax: (317) 337-4649
e-mail: jjjachetta@dow.com

PRESIDENT-ELECT

Michael Barrett
University of Kentucky
Department of Plant and Soil Sciences
409 Plant Science Building
Lexington, KY 40546-0312
Telephone: (859) 257-5020, ext. 80712
Fax: (859) 257-2185
e-mail: mbarrett@uky.edu

VICE-PRESIDENT

Rod Lym
North Dakota State University
Loftsgard Hall 474D
P. O. Box 6050
Fargo, ND 58108-6050
Telephone: (701) 231-8996
Fax: (701) 231-8474
e-mail: rod.lym@ndsu.edu

PAST-PRESIDENT

David R. Shaw
GeoResources Institute
Mississippi State University
Box 9652
Mississippi State, MS 39762
Telephone: (662) 325-9575
Fax: (662) 325-9578
e-mail: dshaw@gri.msstate.edu

SECRETARY

David Vitolo
Syngenta Crop Protection
410 Swing Road
Greensboro, NC 27419
Telephone: (916) 316-6951
Fax: (336) 632-6950
e-mail: david.vitolo@syngenta.com

TREASURER

Anita Dille
Telephone: (785) 532-7240
e-mail: dieleman@ksu.edu

DIRECTOR OF PUBLICATIONS

James V. Anderson
USDA-ARS, PSR
1605 Albrecht Blvd.
Fargo, ND 58105-5674
Telephone: (701) 239-1263
Fax: (701) 239-1252
e-mail: james.anderson@ars.usda.gov

DIRECTOR OF SCIENCE POLICY

Lee Van Wychen
900 Second St. NE, Suite 205
Washington, DC 20002
Telephone: (202) 746-4686
e-mail: Lee.VanWychen@wssa.net

EXECUTIVE SECRETARY

Joyce Lancaster
P. O. Box 1897
Lawrence, KS 66044
Telephone: (785) 843-1235, ext. 250
Fax (785) 843-1274
e-mail: jlancaster@allenpress.com

IWSS

Albert J. Fischer
Vegetable Crops Dept
University of California
One Shields Ave.
Davis, CA 95616
Telephone: (530) 752-7386
Fax: (530) 752-4604
e-mail: ajfischer@ucdavis.edu

CAST

John Bonner
505 Capitol Court, NE, Suite 200
Washington, DC 20002-4397
Telephone: (202) 675-8333, Ext 11
Fax: (202) 675-8334

AIBS (Our Representative)

Lee Van Wychen
900 Second St. NE, Suite 205
Washington, DC 20002
Telephone: (202) 746-4686
e-mail: Lee.VanWychen@wssa.net

NEWSLETTER EDITORS:

WSSA

Clifford (Trey) Koger
Delta Research and Extension Center
Mississippi State University
P. O. Box 197; Stoneville, MS 38776
Telephone: (662) 686-3238
Fax: (662) 686-7336
e-mail: trey.koger@syngenta.com

Aquatic Plant Mgmt. Society (APMS)

Chetta Owens
Telephone: (972) 436-2215
e-mail: chetta@laerf.org

NEWSS

Dwight D. Lingenfelter, M.S.
Extension Agronomist
Dept. of Crop and Soil Sciences
Penn State University
116 ASI Building; University Park, PA 16802
Telephone: (814) 865-2242
Fax: (814) 863-7043
e-mail: DXL18@psu.edu

NCWSS

Harlene Hatterman-Valenti
North Dakota State University
Department of Plant Sciences
470E Loftsgard Hall
P. O. Box 6050, Dept. 7670
Fargo, ND 58108-6050
Telephone: (701) 231-8536
Fax: (701) 231-8474
e-mail: h.hatterman.valenti@ndsu.edu

SWSS

Al Rankins
Mississippi Institutions of Higher Learning
Office of Academic and Student Affairs
3825 Ridgewood Road; Jackson, MS 39211
Telephone: (601) 432-6321
Fax: (601) 432-6978
e-mail: arankins@mississippi.edu

WSWS

Cheryl Fiore
Department of Entomology, Plant Pathology
and Weed Science
New Mexico State University
Box 30003 MSC 3BE; Las Cruces, NM 88003
Telephone: (575) 646-1627
Fax: (575) 646-8087
e-mail: cfiore@nmsu.edu

CWSS-SCM

Anita Drabyk
P. O. Box 674; Pinawa, MB R0E 1L0
Telephone: (204) 753-2915
Fax: (204) 753-2363
e-mail: assistant@cwss-scm.ca

IWSS

Micheal D. K. Owen
Iowa State University
3218 Agronomy Hall; Ames, IA 50011
Telephone: (515) 294-5936
Fax: (515) 294-9985
e-mail: mdowen@iastate.edu

CALENDAR OF UPCOMING EVENTS

| DATE | EVENT | LOCATION | CONTACT |
|---------------------------|---|---|---|
| February 7–10, 2011 | 51st Annual Meeting Weed Science Society of America | Hilton Portland and Executive Tower Hotel Portland, Oregon | www.wssa.net |
| February 28–March 4, 2011 | National Invasive Species Awareness Week | | www.nisaw.org |
| March 7–10, 2011 | WSWS Annual Meeting (Western Society of Weed Science) | Spokane, Washington | www.wsweedscience.org |
| June 7–8, 2011 | Symposium: Climate Change and the Implications for Plant Science | University of Guelph Guelph Ontario Canada | Tel: 519-767-5000 info@open.uoguelph.ca www.plantscience.open.uoguelph.ca |
| June 7–12, 2011 | 11th World Congress on Parasitic Plants | Martina Franca, Italy | http://ipps2011.ba.cnr.it Organizer: Maurizio Vurro maurizio.vurro@ispa.cnr.it or ipps2011@area.ba.cnr.it |
| July 2011 | APMS Annual Meeting (Aquatic Plant Management Society) | Baltimore, Maryland | www.apms.org |
| September 5–7, 2011 | Resistance 2011 Rothamsted Research | West Common Harpenden, Hertfordshire, UK | stephen.moss@bbsrc.ac.uk |
| September 11–16, 2011 | XIIIth International Symposium on Biological Control of Weeds | Kohala Coast of the Big Island of Hawaii | http://uhhconferencecenter.com/xiii_isbcw.html |
| September 25–30, 2011 | Asian-Pacific Weed Science Society Conference | Sebel Cairns North Queensland, Australia | www.apwss2011.com |
| December 15–19, 2011 | 6th World Congress on Allelopathy | Guangzhou, China | http://www.international-allelopathy-society.org/main/WCA/index.html |
| March 27–29, 2012 | 7th International IPM Symposium, “IPM on the World Stage” | Memphis Cook Convention Center Memphis, Tennessee, USA | Symposium Website: http://www.ipmcenters.org/ipmsymposium12/ |